

909 W. DIVERSEY #2W
LINCOLN PARK





ROOM DIMENSIONS

LIVING ROOM : 24' × 12'
KITCHEN : 16' × 8'
PRIMARY BEDROOM : 19' × 11'
SECOND BEDROOM : 20' × 12'
THIRD BEDROOM : 16' × 11'
TERRACE : 17' × 12'
PATIO : 9' × 7'

CHARMING 3BR/2.5B TOWNHOUSE IN THE HEART OF LINCOLN PARK & LAKEVIEW!

This lovely townhouse offers the perfect blend of city and single family-like living with 3 levels of space and no neighbors above. As you step into the home, you're immediately greeted with an open-concept floor plan with a spacious living & dining room that's perfect for relaxing or entertaining. The granite & stainless-steel kitchen offer great cabinet & counter space and features a breakfast bar, glass backsplash, and a direct exhaust hood vent. The private patio on this level is excellent for the grill and the powder room is super convenient. There are two giant bedrooms on the 2nd floor. All three bedrooms are large enough to accommodate king-sized beds AND work from home spaces. The full bathroom on this level is nicely appointed with natural stone & marble tiling. At the top is the large primary suite that's completely isolated from the rest of the living space, boasts a large walk-in closet, a skylight with remote controlled blinds, and access to the private rooftop terrace that's waiting for your finishes. The well-appointed en-suite bathroom features two skylights, a double vanity, a whirlpool tub, and separate shower. With the large laundry room with side-by-side washer & dryer, awesome organized custom closets, storage space throughout, gas fireplace, and attached covered parking, this is THE ONE you've been looking for. Steps from everything this area has to offer including shops, nightlife, dining, parks, CTA buses, L station, and the award winning Alcott Elementary School.

3 BEDROOM

2.1 BATH

TAXES: \$11,893

ASSESSMENTS: \$300 / MONTH

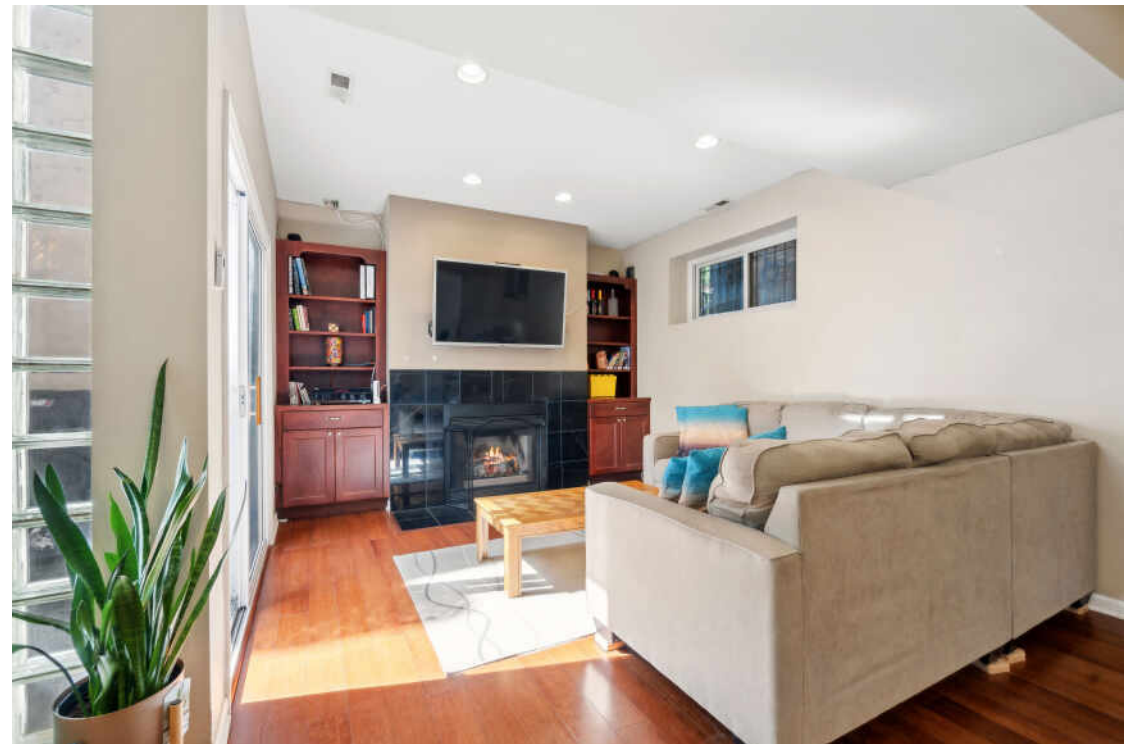


© VHT STUDIOS





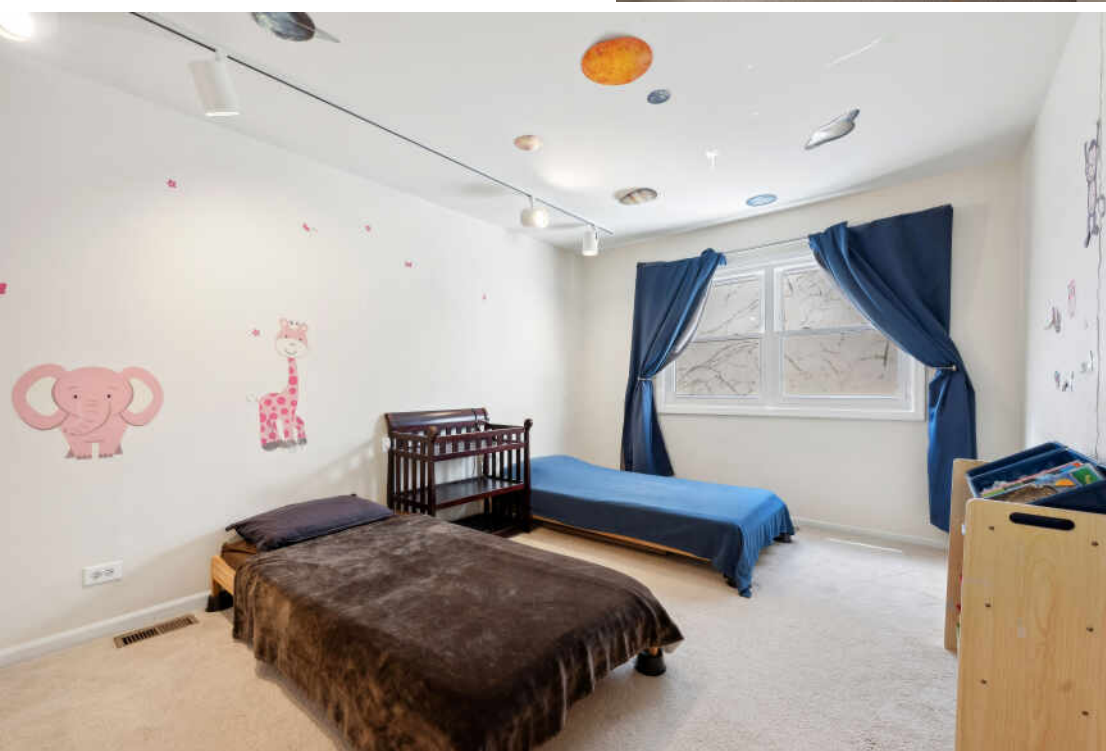
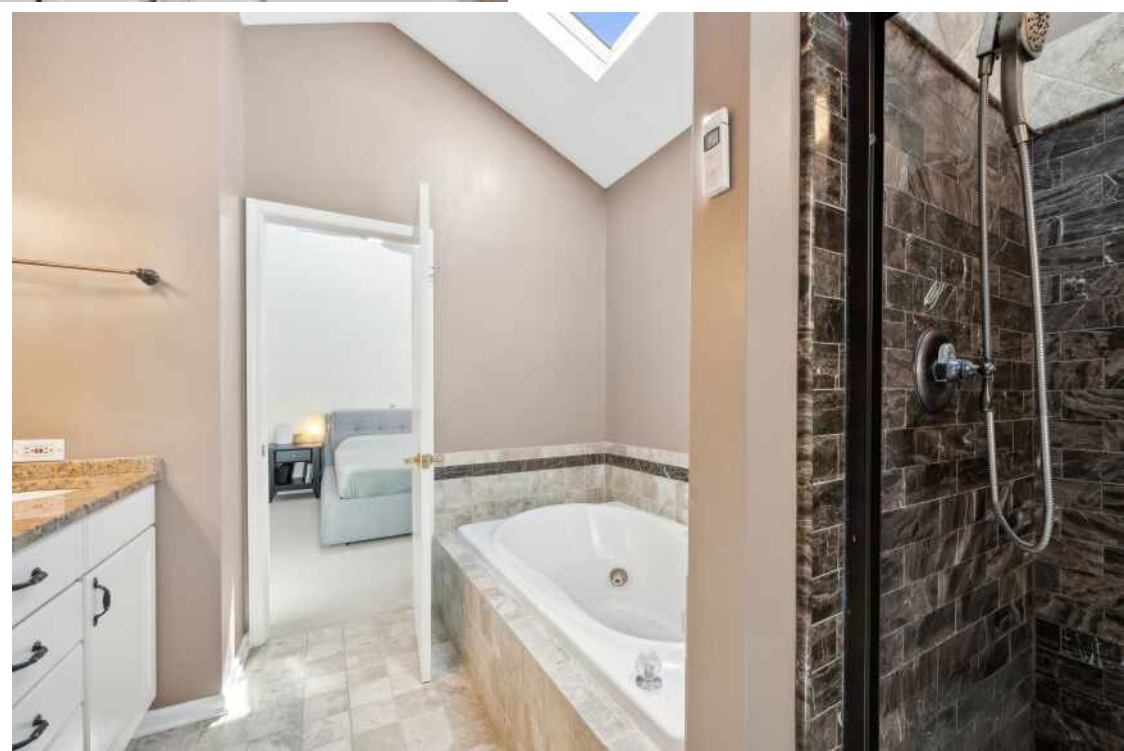
PHOTO STUDIOS



6 909 W. DIVERSEY #2W



909 W. DIVERSEY #2W 7







LINCOLN PARK RESIDENTS HAVE IT ALL - FROM THE ARTS TO ITS FAMED ZOO - RIGHT IN THEIR BACKYARD.

The neighborhood includes quiet tree-lined residential blocks, DePaul University, and two major museums in addition to the Lincoln Park Zoo, one of the country's oldest zoos. There's also a wide array of entertainment, eateries, and hotspots.

An evening in Lincoln Park might include seeing a play at the acclaimed Steppenwolf Theatre and dining at a Michelin-rated restaurant or a quaint neighborhood café. Sports fans will find as many dive bars with the game on as foodies will find fine-dining restaurants with al-fresco seating.

Lincoln Park is just as delightful by day. Residents are close to the lakefront and North Avenue Beach, parks, farmers markets, festivals, and countless shops, ranging from upscale boutiques on Armitage to larger retailers at the Clybourn Corridor.

Housing stock ranges from smaller townhomes and vintage condominiums to rehabs and new construction. Buyers around DePaul University can find loft condominiums in converted factories and warehouses. On its eastern edge, Lincoln Park features beautiful vintage brownstones along with high-rises with breathtaking views of the lake, park, North Pond Nature Sanctuary, and city skyline.

Located just two miles from downtown, Lincoln Park offers residents a quick commute to work. Public transportation abounds, with the CTA's Brown and Red lines serving the neighborhood in addition to several bus routes and Lake Shore Drive.



K.C. LAU

MOBILE (312) 315-7163

KCLAU@ATPROPERTIES.COM

WWW.ATPROPERTIES.COM/SITE/KCLAU