



910 ALLMEN AVENUE
HINSDALE

910 ALLMEN AVENUE · HINSDALE



@properties | CHRISTIE'S
INTERNATIONAL REAL ESTATE

LUXURY
PORTFOLIO
INTERNATIONAL



PAUL MANCINI BROKER

1 6302671899 mobile
630.230.0500 office
pmancini@atproperties.com

910 ALLMEN AVENUE · HINSDALE



@properties | CHRISTIE'S
INTERNATIONAL REAL ESTATE

LP LUXURY
PORTFOLIO
INTERNATIONAL



910 ALLMEN AVENUE

FEATURES

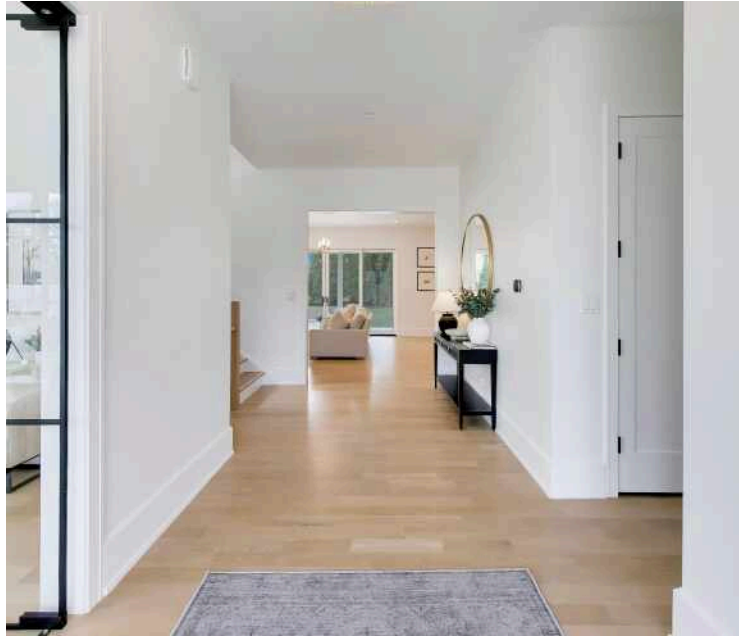
Stunning 2025 New Construction Home on a Quiet Cul-de-Sac in Prime Hinsdale. Welcome to 910 Allmen, a breathtaking newer construction residence built in 2025 by renowned local builder Peter Byrne. This exceptional home offers modern luxury and thoughtful design throughout, perfectly situated on a peaceful cul-de-sac street in one of Hinsdale's most desirable neighborhoods. Step inside to discover an open-concept layout flooded with natural light, creating a bright, airy atmosphere ideal for both everyday living and effortless entertaining. Soaring 10-foot ceilings enhance the spacious feel, while premium finishes and high-end details reflect the quality craftsmanship expected from a Peter Byrne home. The home features an amazing mudroom and a show-stopping scullery prep kitchen, a dream for home chefs and hosts alike. Enjoy seamless indoor-outdoor living on the private covered patio, perfect for relaxing or al fresco dining. Additional highlights include a 3-car attached garage and golf sim in basement.



PAUL MANCINI BROKER

1 6302671899 mobile
630.230.0500 office

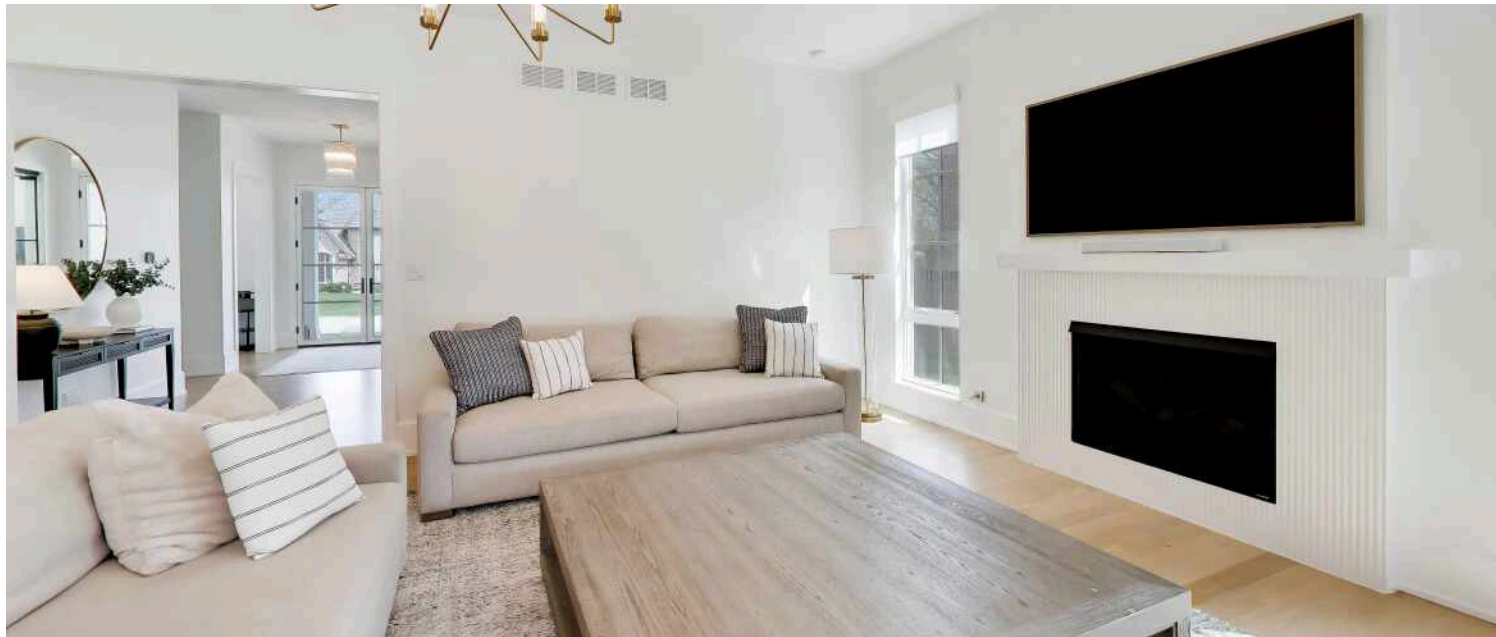
pmancini@atproperties.com

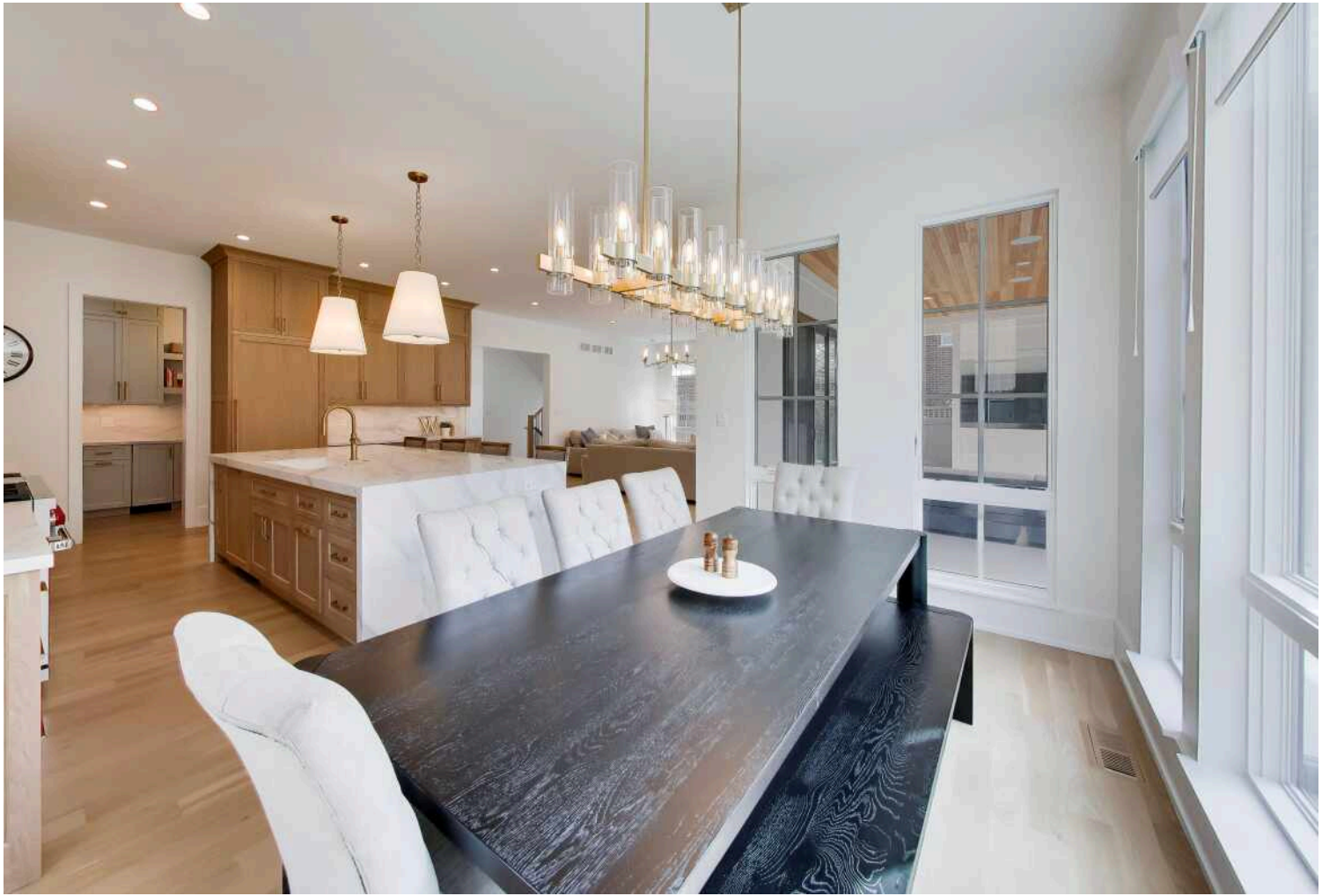


FOYER



LIVING

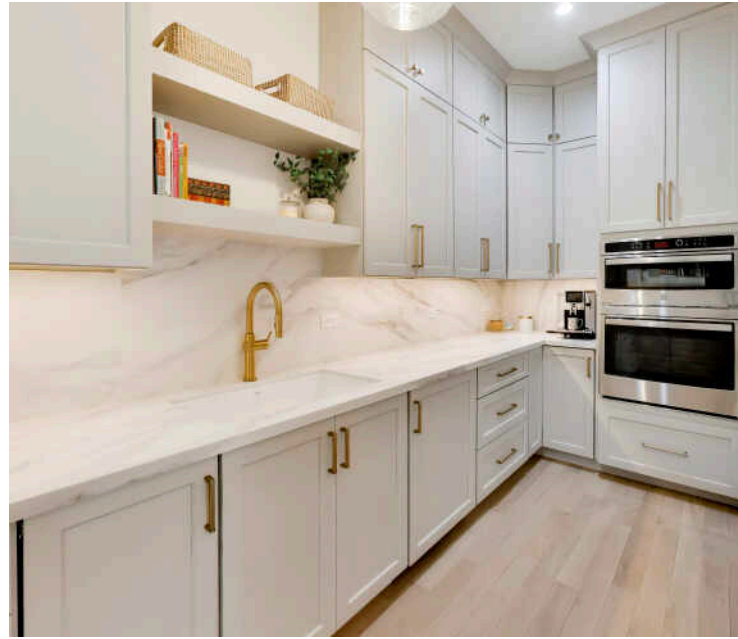




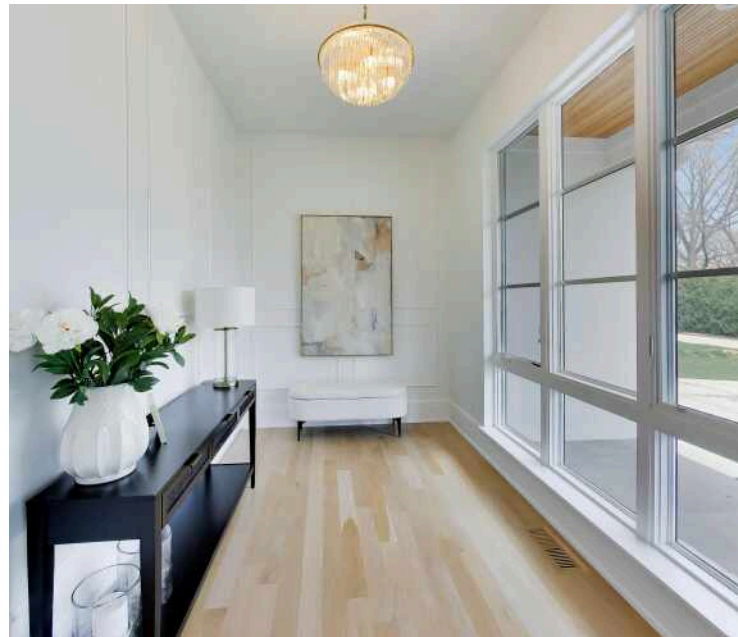
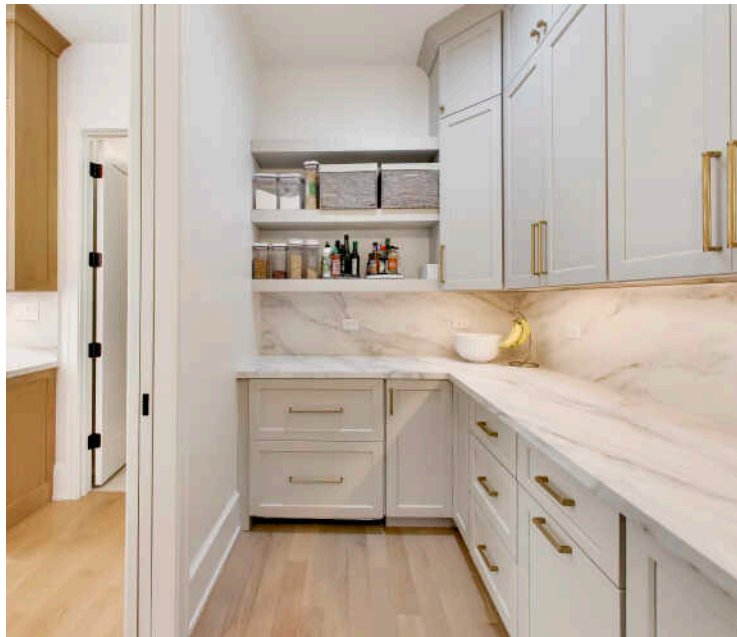


KITCHEN

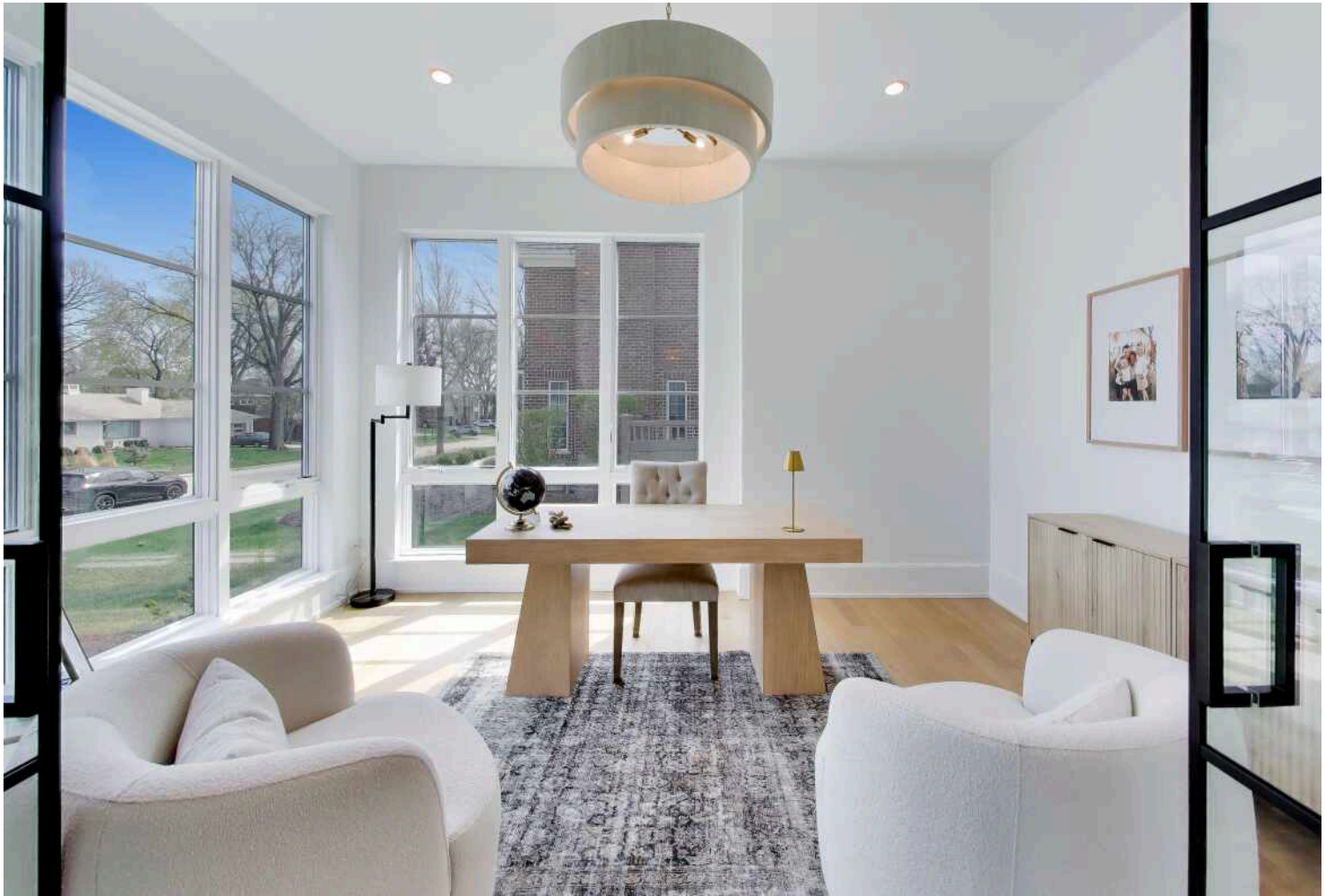




BUTLER'S PANTRY



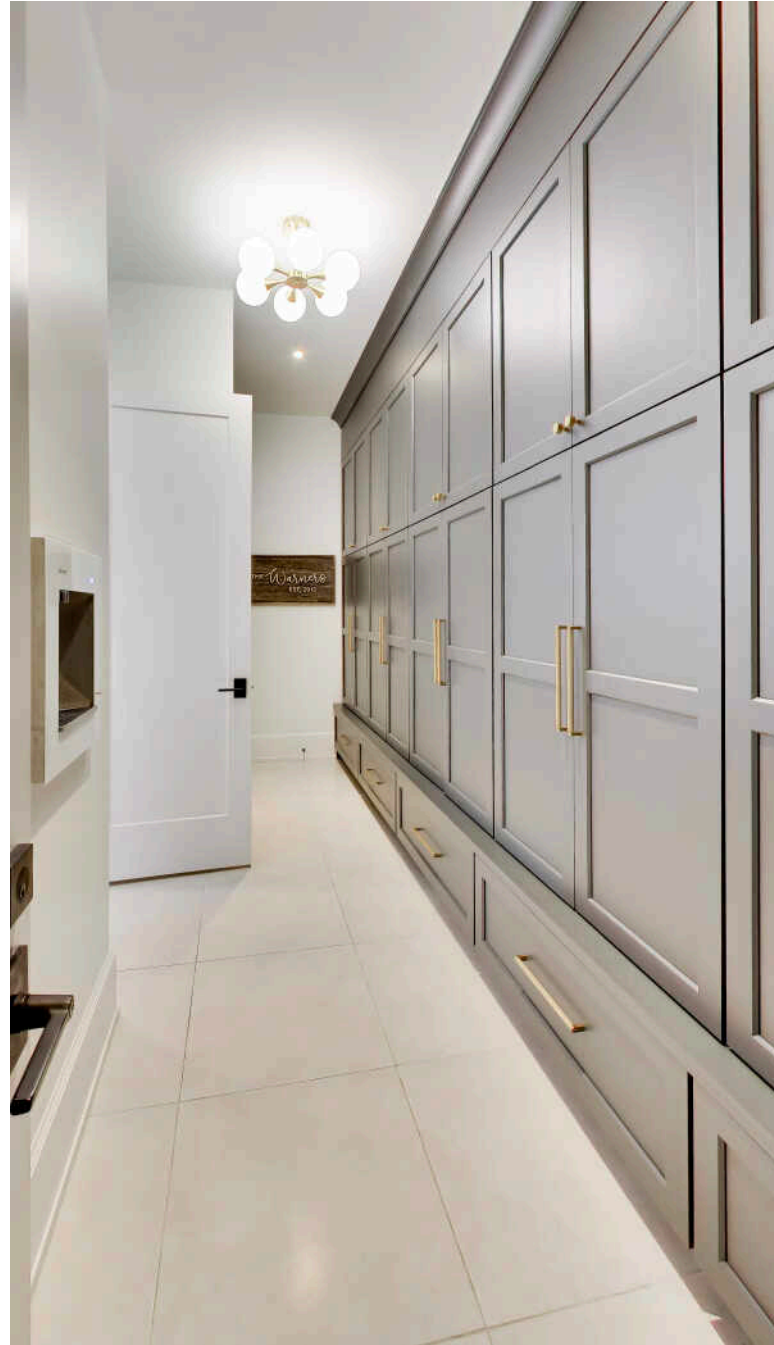
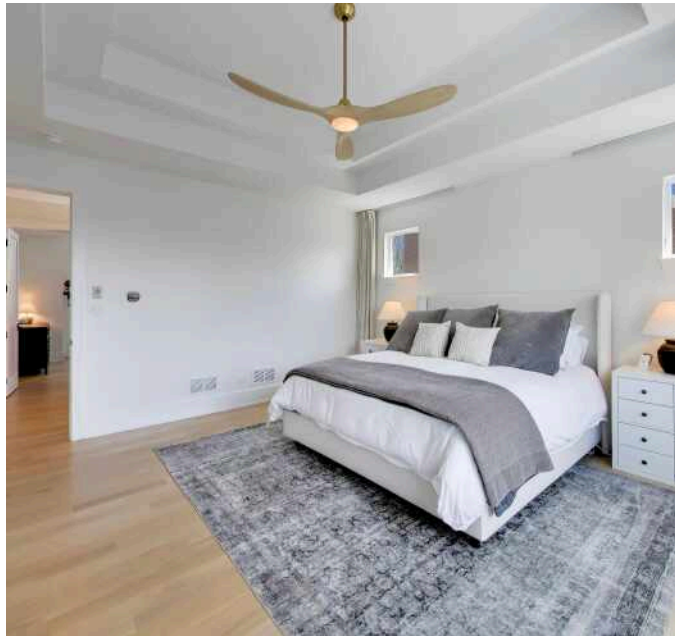
DEN



OFFICE



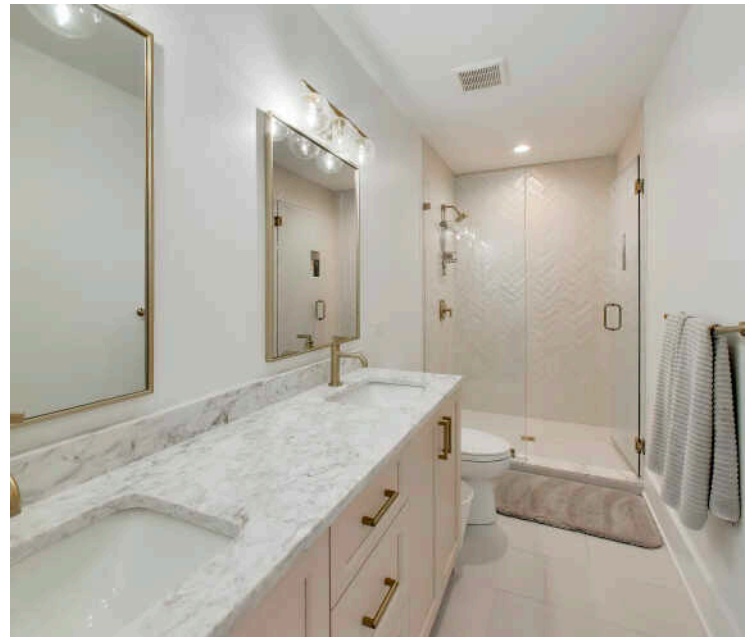
PRIMARY BEDROOM



MUDROOM



ENSUITE



ENSUITE



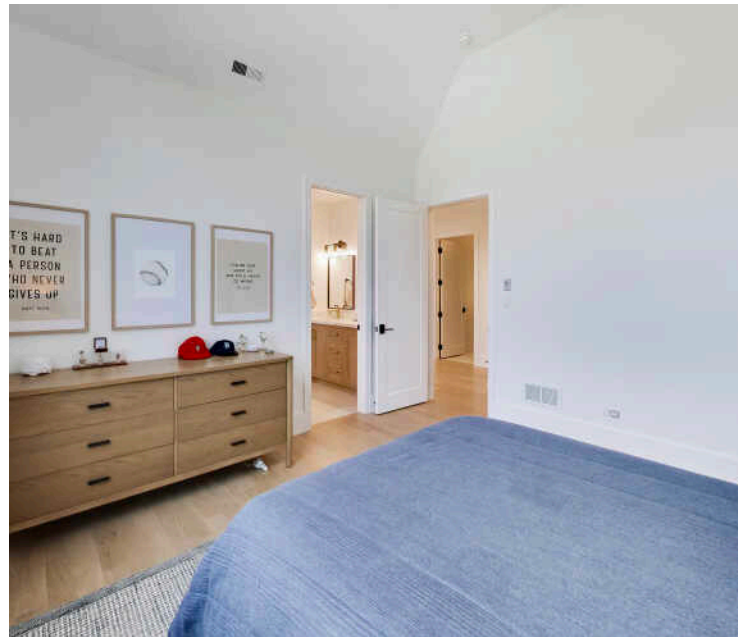
BEDROOM



SEMI-ENSUITE



BEDROOM

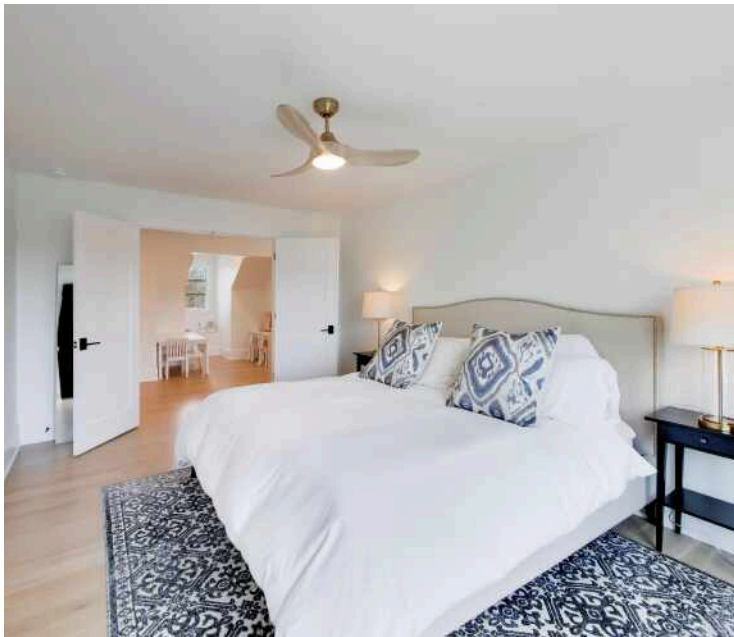




LAUNDRY



BEDROOM



BATHROOM



RECREATION





BEDROOM/GOLF SIMULATOR



COVERED PATIO





REAR EXTERIOR



HINSDALE'S HISTORIC DOWNTOWN AND BEAUTIFUL HOMES ATTRACT SOME OF THE STATE'S MOST AFFLUENT RESIDENTS, EARNING THE SUBURB ITS RANKING AS ONE OF THE WEALTHIEST ZIP CODES IN ILLINOIS.

Locals love the natural beauty and historic elegance of Hinsdale, which boasts a number of scenic parks and architectural landmarks.

Downtown Hinsdale offers a step back in time. The downtown district is on the National Register of Historic Places, with several historic buildings dating back to before the community was incorporated in the 1870s. Residents and visitors will also find award-winning restaurants that will satisfy any palate along with a variety of shops, from jewelry stores and upscale boutiques to craft shops and more.

The community has a wealth of amenities such as the Hinsdale Community Swimming Pool, Katherine Legge Memorial Park, and Burlington Park, which is home to various annual events including the farmers market, Fine Arts Festival, and Uniquely Thursdays concert series. There are also numerous parks and athletic facilities for those who enjoy sports like tennis, baseball, and soccer.

Hinsdale has easy access to the Tri-State Tollway, Stevenson Expressway, and three train stations along Metra's BNSF Railway.





@properties® | CHRISTIE'S
INTERNATIONAL REAL ESTATE

Leading REAL ESTATE
COMPANIES
OF THE WORLD®

LP
LUXURY
PORTFOLIO
INTERNATIONAL

