

911 ESSEX LANE  
MICHIGAN CITY







#### ROOM DIMENSIONS

LIVING ROOM : 17.3' × 13.6'

DINING ROOM : 10.0' × 10.2'

KITCHEN : 11.8' × 15.9'

PRIMARY BEDROOM : 11.3' × 11.3'

SECOND BEDROOM : 9.9' × 8.9'

THIRD BEDROOM : 10.9' × 11.8'

FAMILY ROOM : 27.7' × 12.2'

LAUNDRY ROOM : 9' × 5.4'

MUD ROOM : 11.11' × 11.11'

3 BEDROOM

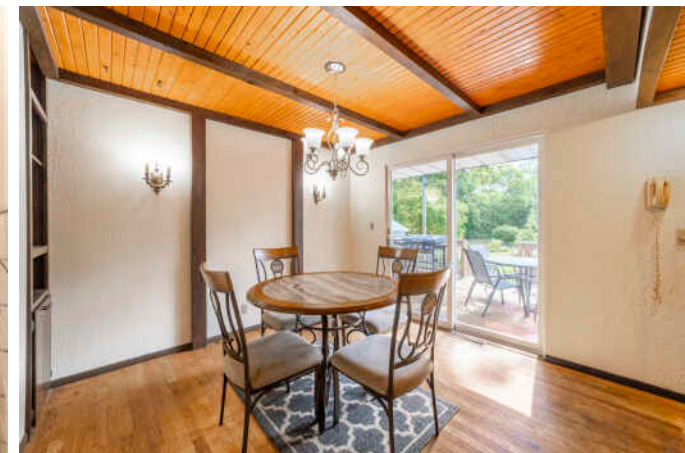
2 BATH

TAXES: \$1,593

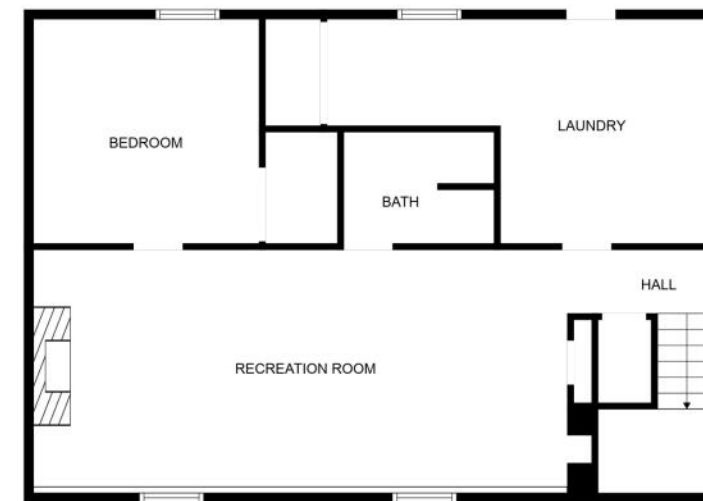
## PERFECT MIX OF UPDATED FEATURES AND CLASSIC CHARACTER THAT'LL MAKE YOU FEEL RIGHT AT HOME.

- Charming 3 bedroom, 2 bath VILLAGE GREEN gem that's just waiting for you to call it your own.
- Cozy living room offering hardwood floors & classic brick wood-burning fireplace.
- Spacious kitchen open to lovely dining room with built-in shelves.
- Updated full bathroom in 2025.
- Large freshly painted family room with brick gas fireplace.
- Third bedroom with large cedar closet & egress window in lower level.
- Walk-out from the lower-level laundry/mud room leading to the exterior.
- Rear deck overlooking the fully fenced back yard
- Two car garage and loads of extra parking in the expanded driveway.
- Big ticket items completed for you include new vinyl siding on house (2023), new front door (2023), newer roof (2017), furnace & A/C (2021).









FLOOR 1



FLOOR 2

**911 ESSEX LANE  
MICHIGAN CITY, IN**





WITH PRISTINE BEACHES AND CLOSE PROXIMITY TO BOTH THE **INDIANA DUNES** AND THE SOUTH SHORE OF LAKE MICHIGAN, MICHIGAN CITY HAS IT ALL.

Home to the Old Michigan City Light, the community boasts one of the last remaining and oldest lighthouses in Indiana. Today, the Michigan City Historical Society operates the Old Lighthouse Museum for visitors to explore the historical landmark.

Residents take advantage of the many parks and beaches, as well as three golf courses. Washington Park is a local favorite, offering a beach, fishing, bird watching, hiking, picnic areas, sand volleyball, and ice skating in the winter. The nearby Washington Park Zoo is home to tigers, wolves, alligators, and grizzly bears. Michigan City's Blue Chip Casino Hotel Spa is a local getaway with a casino, dining options, and a spa. For shopping enthusiasts, the Lighthouse Place Premium Outlets features more than 100 factory stores in a park-like, village setting.

Michigan City real estate opportunities encompass beachfront cottages, grand vacation homes, and custom homes in gated resort communities.

The Michigan City Transit runs a local bus route, and both Amtrak and the South Shore Line offer daily service from Michigan City to Chicago.



[illegible]



## JAMIE FOLLMER

BROKER

(219) 851-2164

JAMIEFOLLMER@ATPROPERTIES.COM



All specifications, features, designs, price, assessments, taxes and materials are subject to change without notice. Depicted floor plans and architectural renderings are only an artist's impression.

