



912 N CARLYLE LANE
ARLINGTON HEIGHTS



912 N CARLYLE LANE · ARLINGTON HEIGHTS

@properties | CHRISTIE'S
INTERNATIONAL REAL ESTATE



MARY CAVANAGH BROKER

1 8474944740 mobile
847.797.0200 office
marycavanagh@atproperties.com



912 N CARLYLE LANE • ARLINGTON HEIGHTS





LIVING

912 N CARLYLE LANE BEAUTIFULLY EXPANDED, EXPERTLY FINISHED HOME

ROOM DIMENSIONS

Living Room	13'x21'
Dining Room	11'x16'
Grand Foyer	14'x12'
Kitchen	11'x13'
Kitchen Breakfast Nook	1'x1'
Family Room	17'x14'
Great Room	19'x18'
Mud/Laundry Room	9'x10'
Primary Suite	14'x19'
Bedroom 2	14'x14'
Bedroom 3	13'x11'
Bedroom 4	12'x11'
Bedroom 5, Basement	12'x16'
Recreation Room	28'x14'
Storage Closet	11'x6'
Utility Room	21'x8'
Add'l Storage	11'x6'

FEATURES

This special home holds the most incredible upgrades and additions behind the traditional front doors! Prepare to be WOWED in every room you walk into. Large foyer with double coat closet, rich hardwood floors, handsome trim and molding set the tone. Gracious living room that invites lively conversation. Dining room set for the most important meals and memories that we share with friends and family. GORGEOUS kitchen with timeless custom cabinetry in two tones, granite countertops, high end stainless appliances including a Thermador Oven, Miele Dishwasher, Warming Drawer and MORE! Sunny eating area opens to tiered deck flowing to brick paver patio out back for summer fun! PERFECTLY Designed is your Family/Great room addition with one of a kind stunning beamed ceiling with eye catching steel plates! Fireplace surrounded with built in book cases, built in wet bar with bar fridge and room to host a large gathering seamlessly! Primary Suite is generously sized. Spa Bath remodeled to include 2 walk in closets, 2 vanities with quartz counter tops and a separate shower and whirlpool for ultimate relaxation! Additional 2nd floor bedrooms offer incredible closet space and share the updated hall bathroom with dual sink vanity and glass enclosed walk in shower! Full Finished basement holds bedroom #5 with egress window, FULL Bathroom, large recreation space and storage galore! This warm and welcoming home has been cherished and it shows! Filled with updates allows you to move in and immediately start building new memories!



MARY CAVANAGH BROKER

1 8474944740 mobile
847.797.0200 office

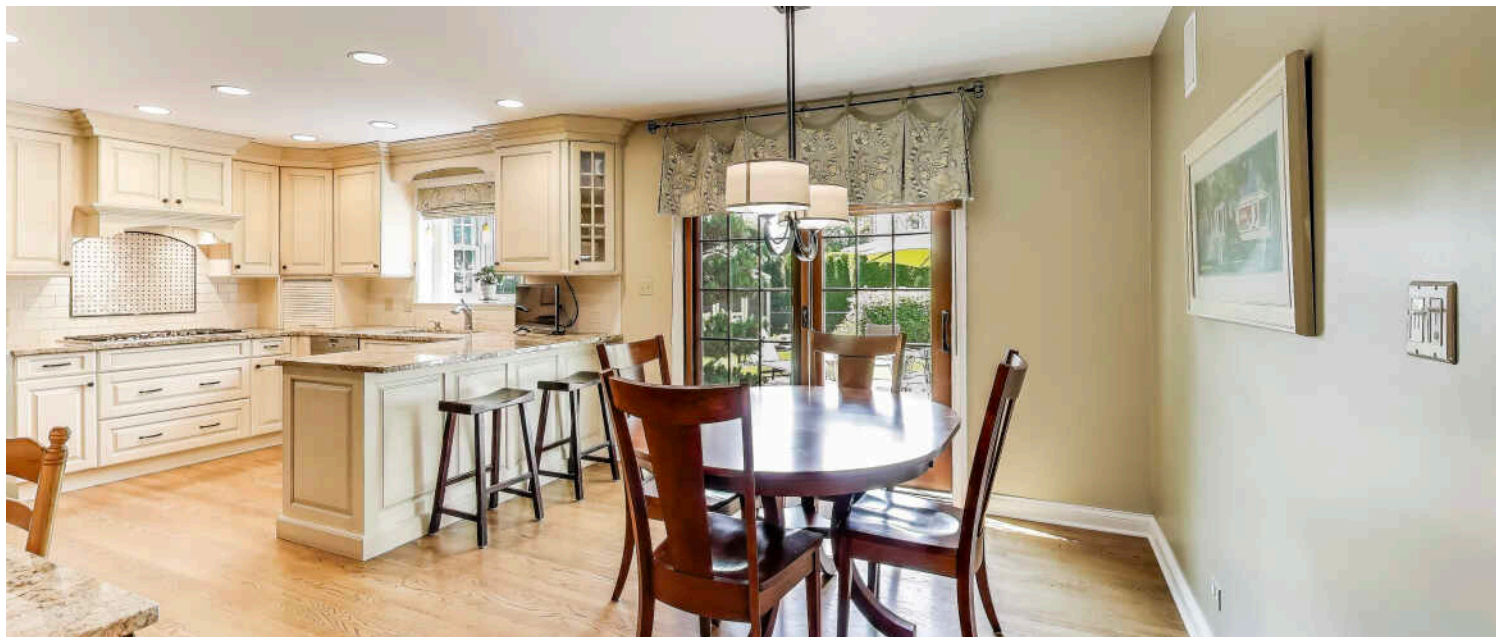
marycavanagh@atproperties.com

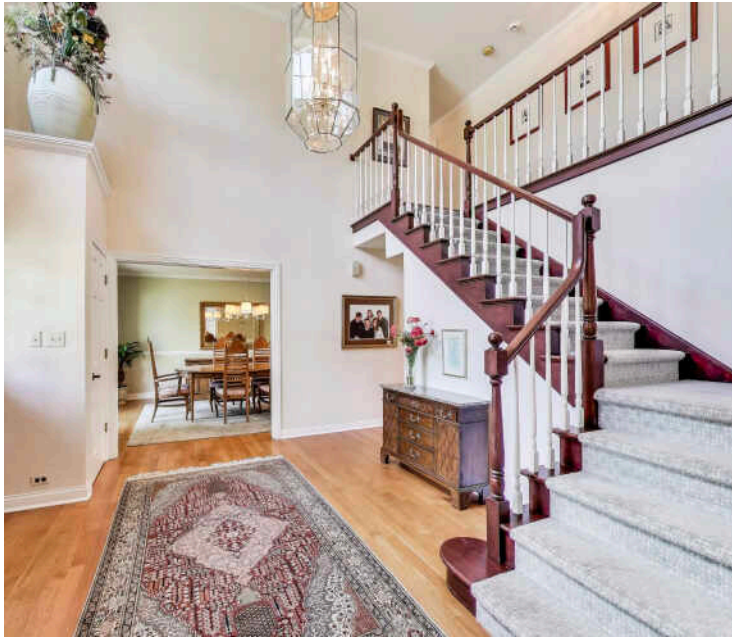




KITCHEN







DINING

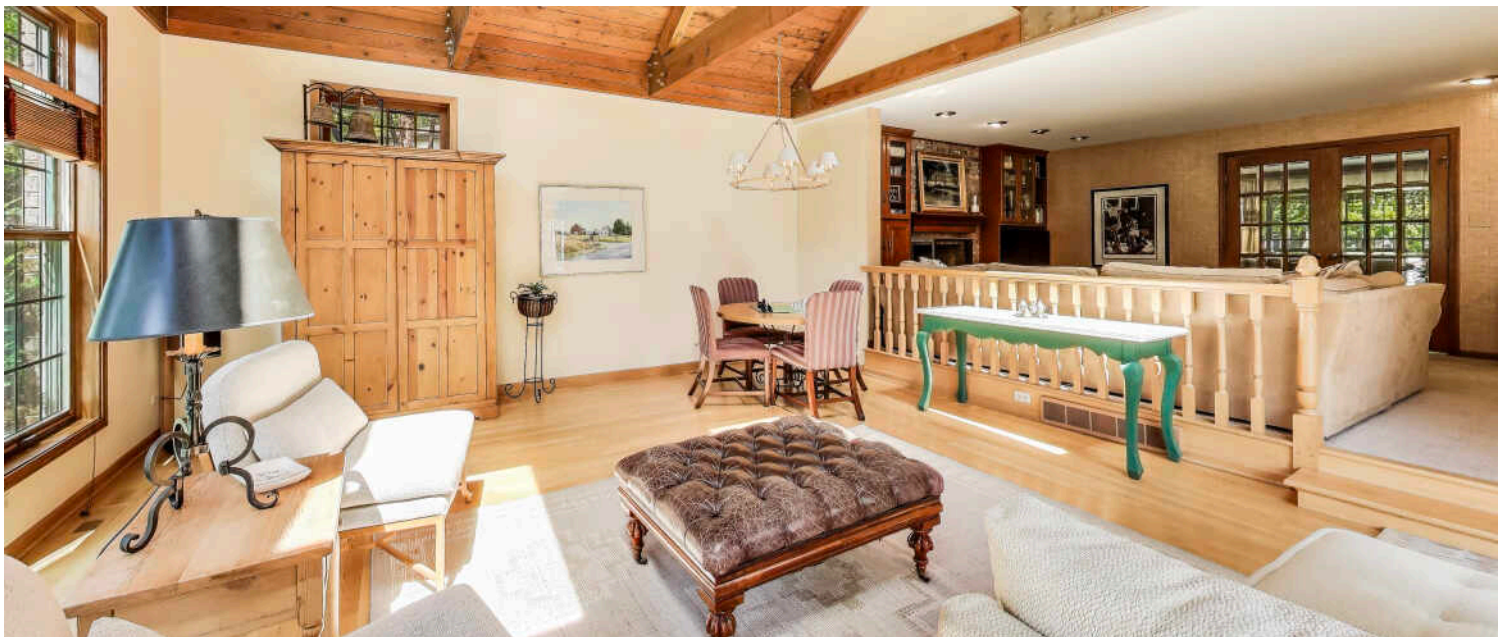


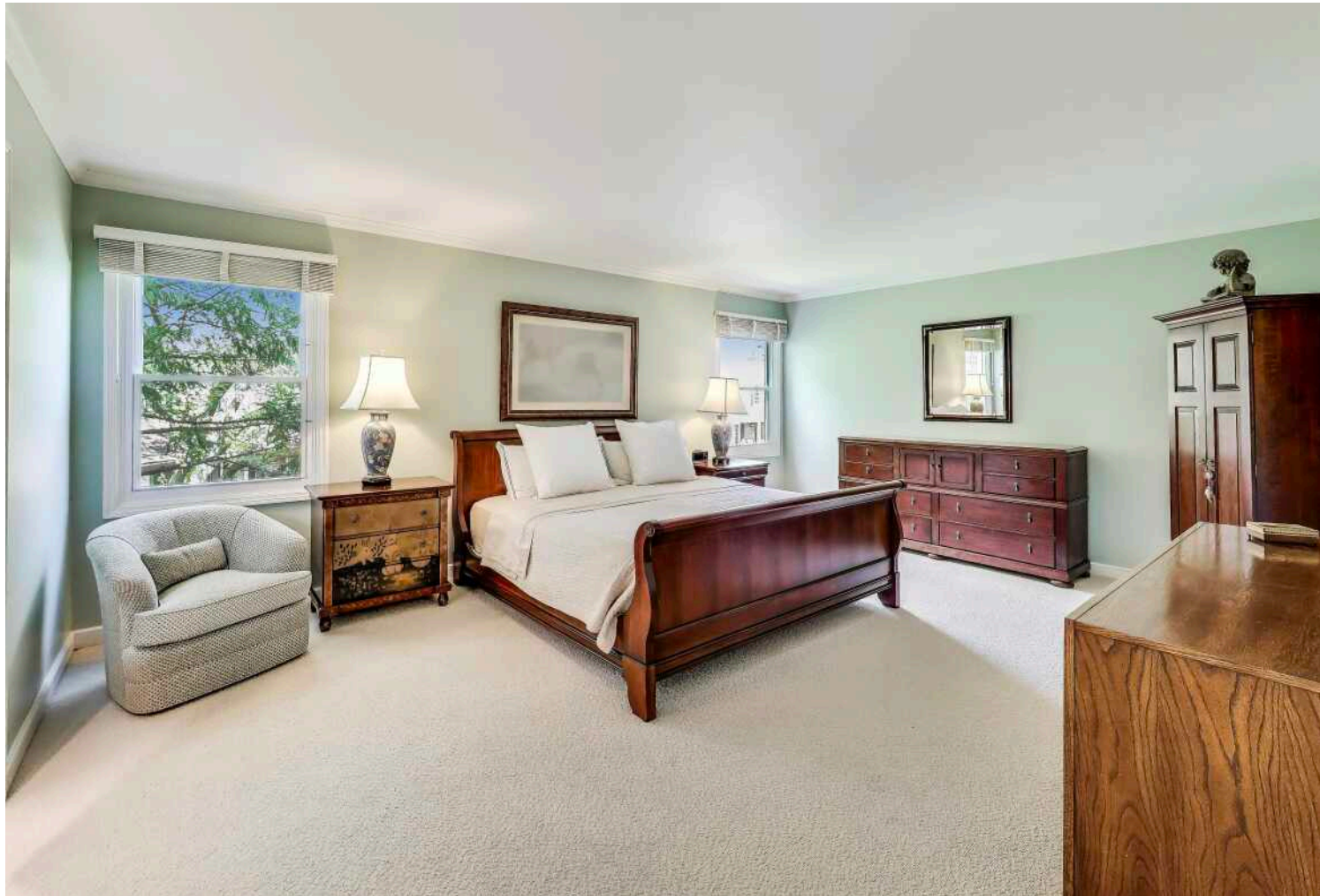
FAMILY





SUNROOM

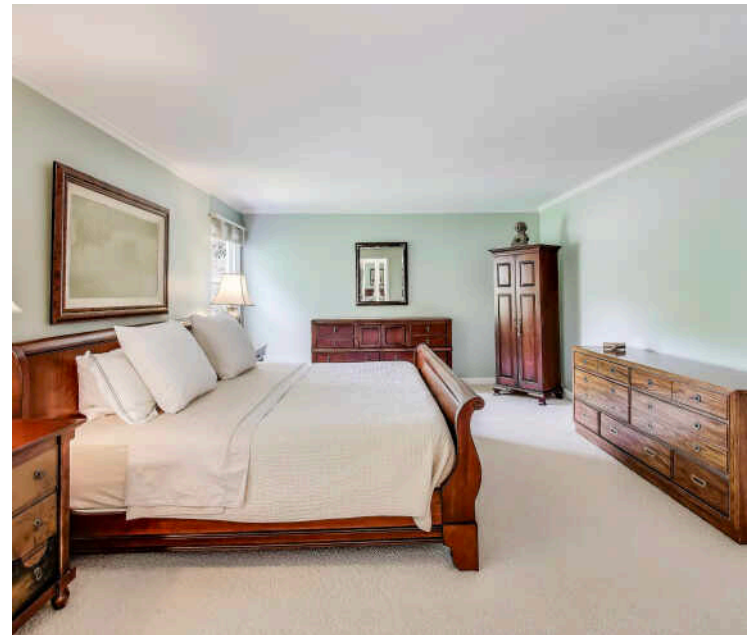
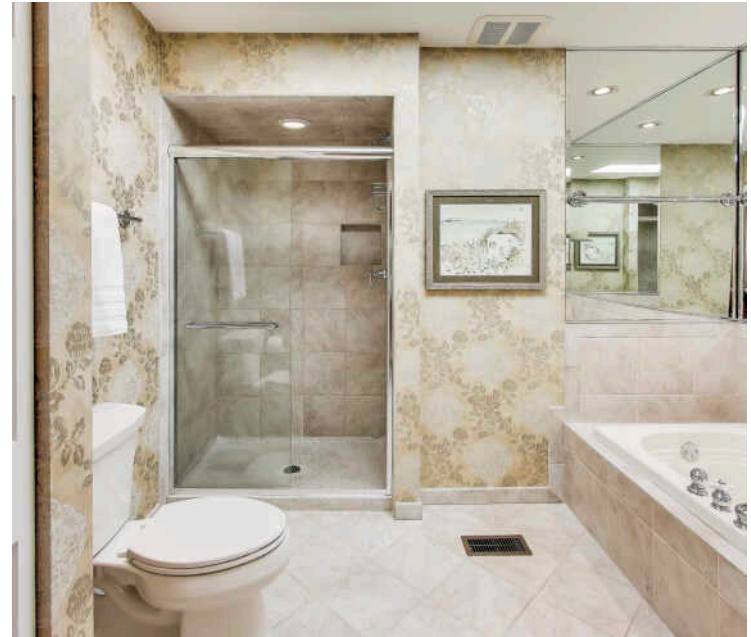




PRIMARY BEDROOM



ENSUITE

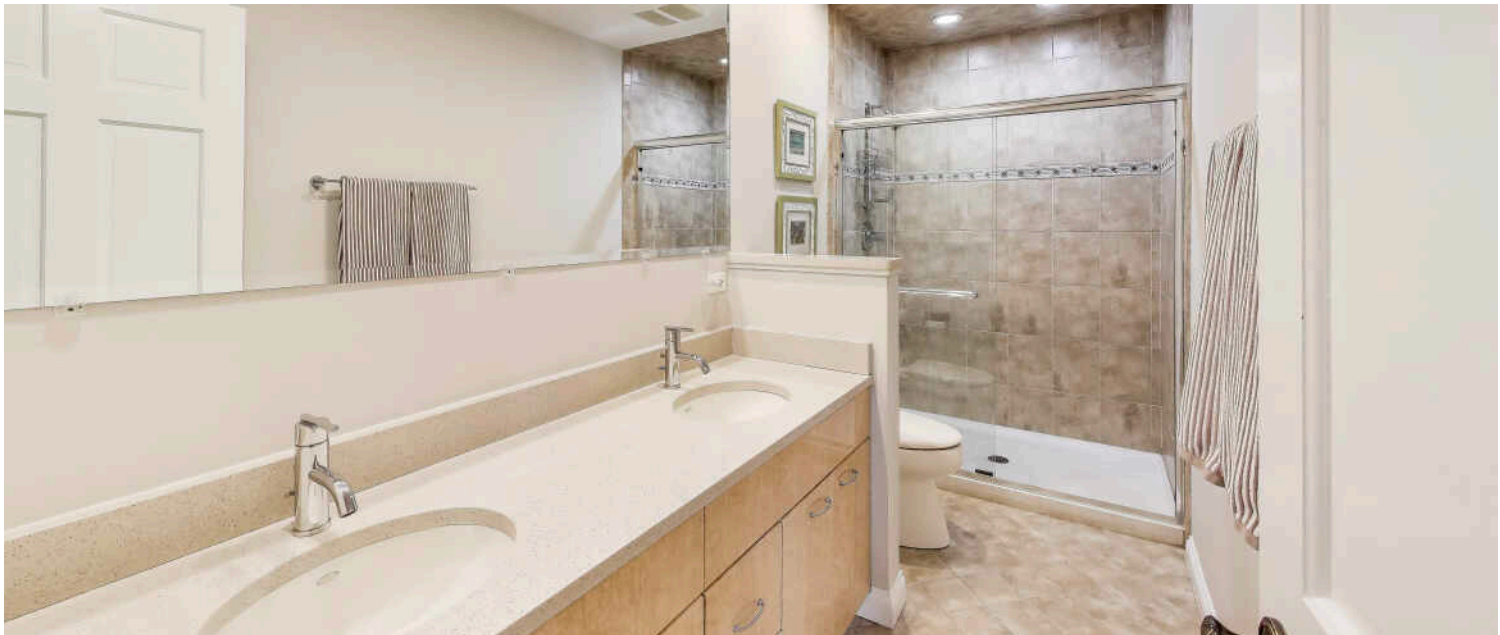




BEDROOM



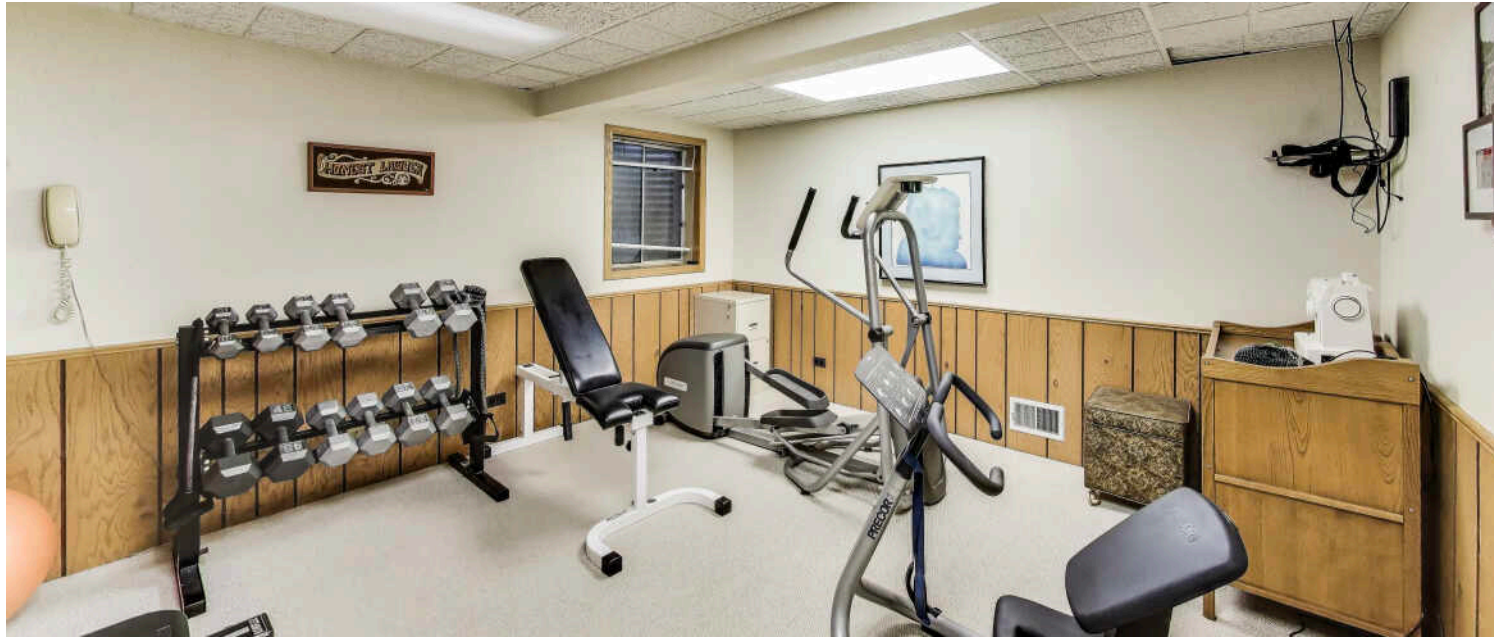
BEDROOM



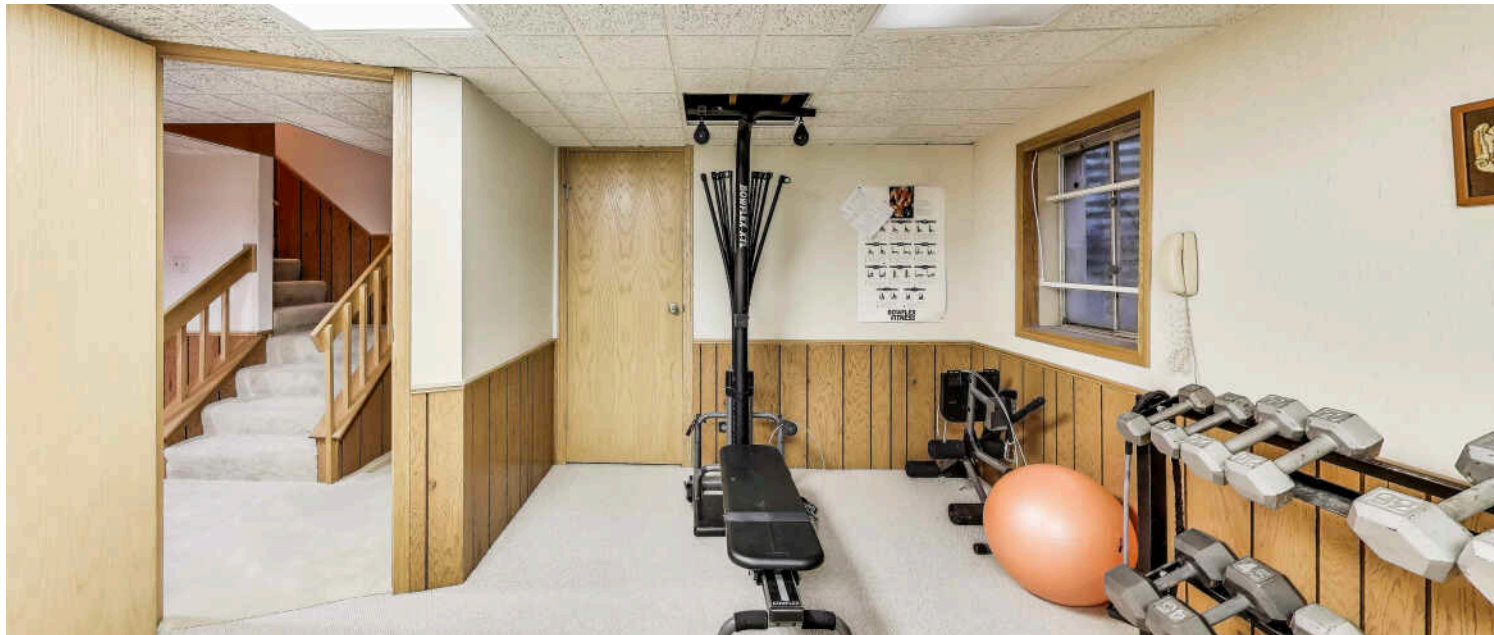
BATHROOM

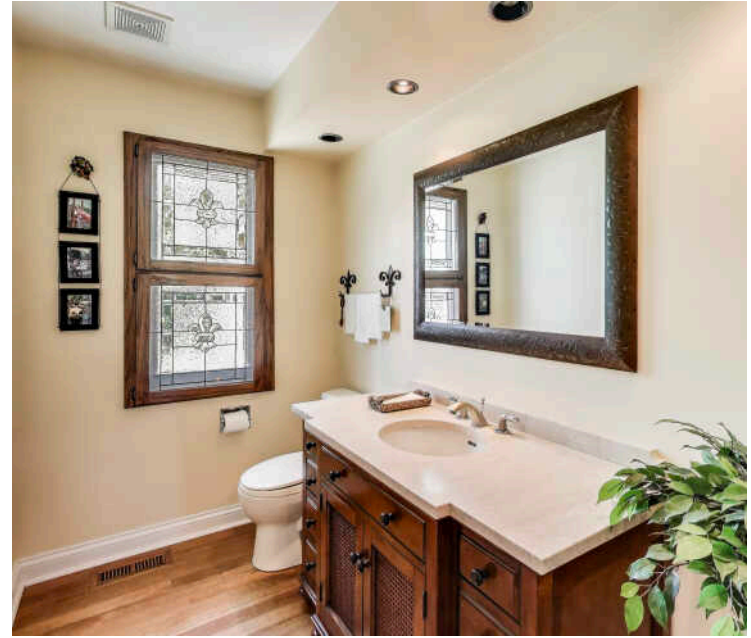




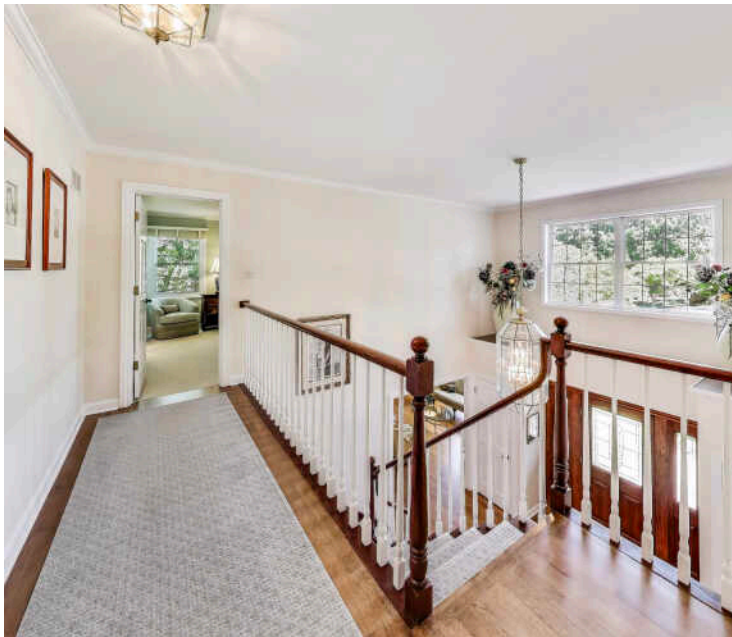


BEDROOM

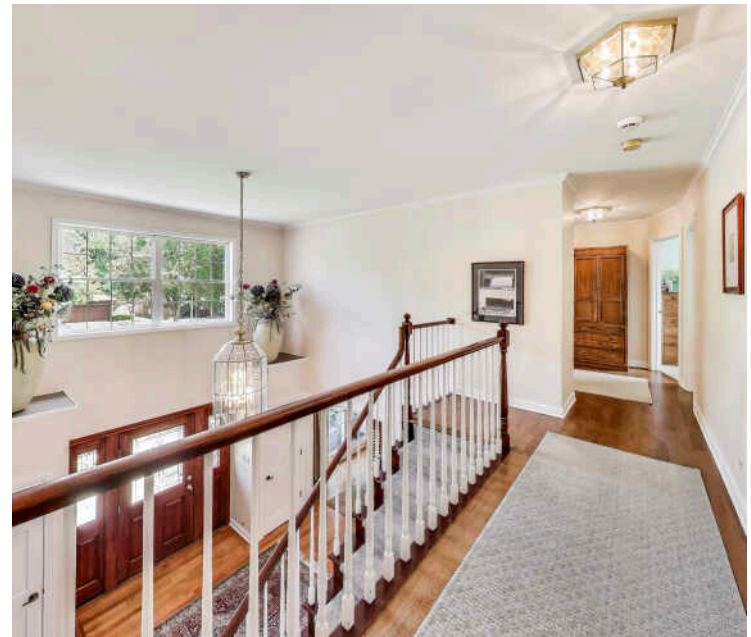


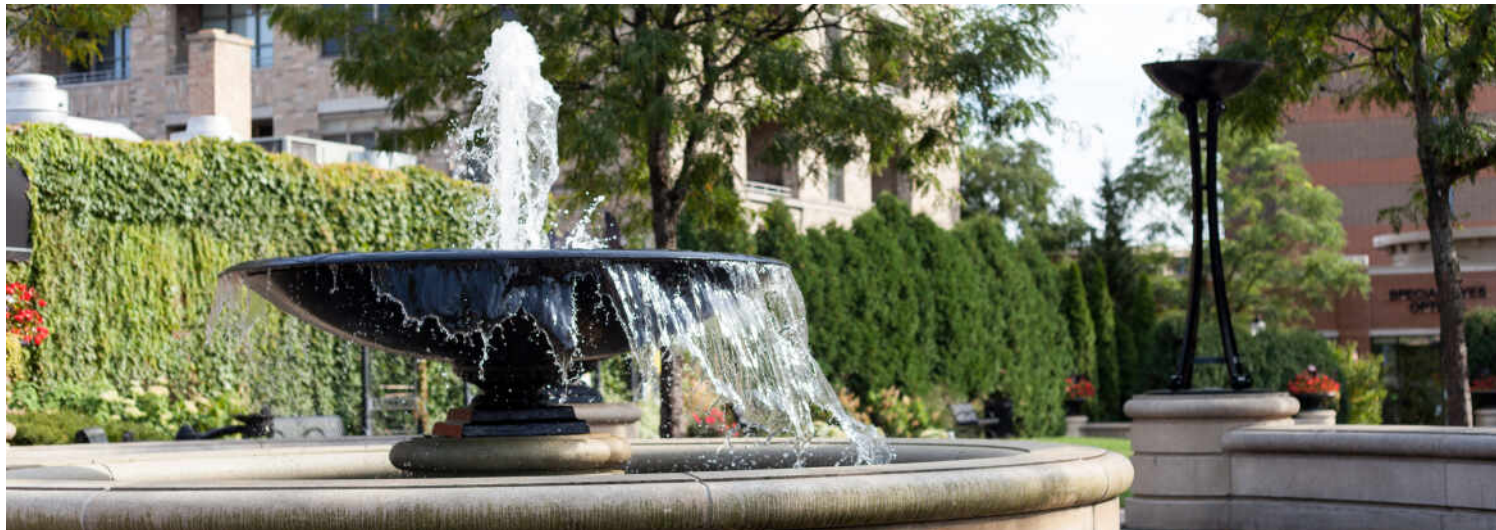


POWDER



CORRIDOR





WITH ALL THE AMENITIES YOU WOULD EXPECT TO FIND IN LARGER URBAN
SETTINGS, **ARLINGTON HEIGHTS** GIVES MOST CITIES A RUN FOR THEIR MONEY

*Locals love the community's lively
downtown, world-renowned
racetrack, and countless restaurants,
parks, and summer events.*

Located 25 miles northwest of Chicago, the community has a vibrant downtown area, theaters, restaurants, shopping, parks, recreation, and two commuter train stations. It's no wonder Arlington Heights tops the list of the highest-populated villages in the country.

Arlington Heights is home to more than 200 restaurants, many situated in its downtown area and offering something for every taste.

The village hosts outdoor festivals, parades, and its ever-popular Frontier Days. Residents have plenty of bike paths, picnic areas, golf courses, lakefront paths, and more to enjoy.

Commuting downtown is a convenient 30-minute trip with two Metra stations offering direct access to Chicago's Ogilvie Station. The village also has direct access to I-90 as well as Route 53, which links to several interstates.





PATIO



REAR EXTERIOR

