

925 S WILLOW WALK DRIVE
PALATINE





4 + 1 BEDROOM
2.5 BATH
TAXES: \$13,022
ASSESSMENTS: \$1,024/YR

Welcome to Willow Walk!

Tucked away on a serene, tree-lined street in the coveted Willow Walk neighborhood, this beautiful colonial home is the definition of move-in ready. From the moment you step inside, you'll feel the warmth and charm that makes this house feel like home.

The first floor boasts expansive living and dining rooms, both featuring hardwood floors, perfect for entertaining or relaxing. The open kitchen has been thoughtfully updated with high-end stainless steel appliances, quality cabinetry, granite countertops, and plenty of space for an eat-in table. The kitchen flows seamlessly into a spacious family room, complete with a beautiful brick fireplace and built-in shelves for your treasured belongings. Off the kitchen, you'll find a sun-drenched 4-season sunroom that brings the outdoors in, offering beautiful views of the professionally landscaped yard. Step outside to the oversized brick paver patio - ideal for outdoor gatherings or peaceful evenings. The first floor also includes a nicely, updated powder room, as well as a laundry room with convenient access to the oversized 2-car garage, which features newer epoxy floors.

Upstairs, the primary suite is a true retreat, offering a large bedroom, ensuite bath and a spacious walk-in closet. Three additional generously sized bedrooms and an updated full hall bath with a tub complete the second floor.

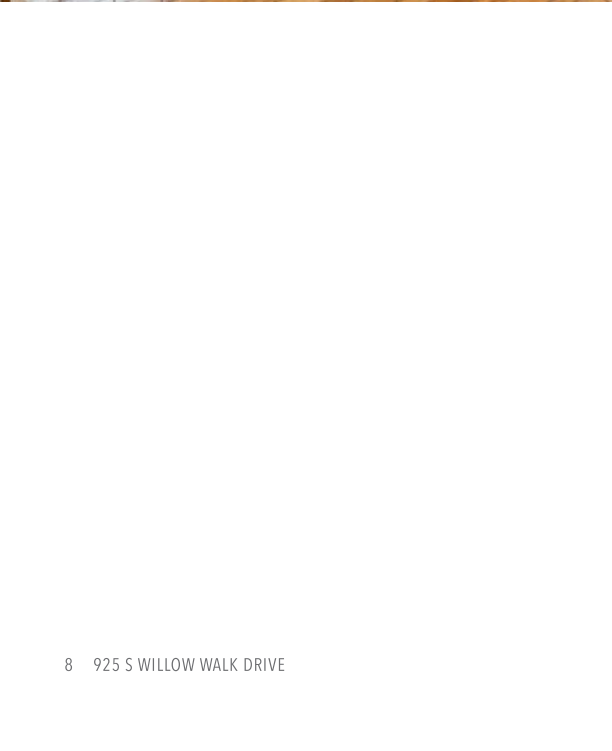
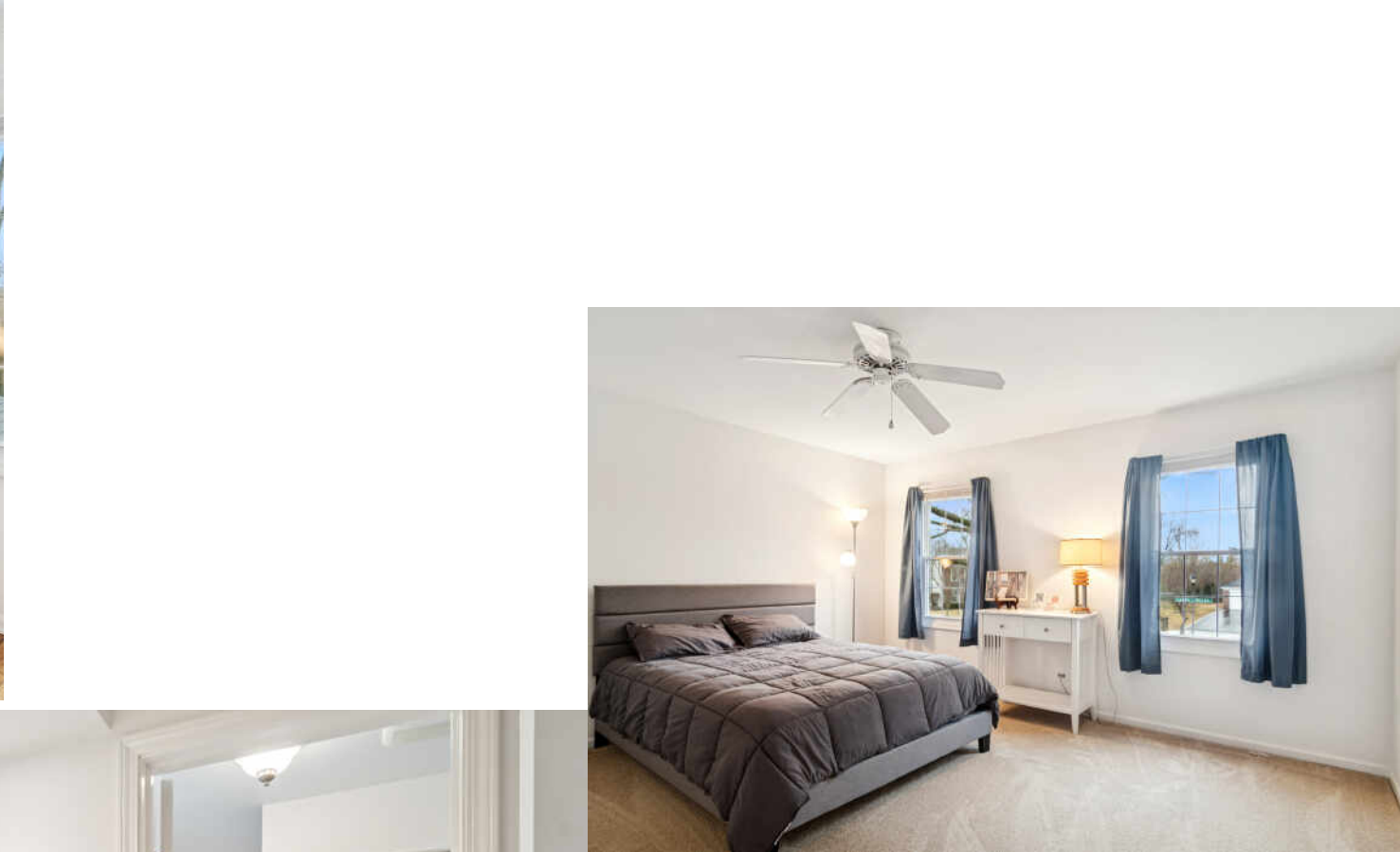
And that's not all! The finished basement expands your living space with a rec room, a fifth bedroom for guests or a home gym, plus a large unfinished storage area featuring a cedar closet, ideal for storage.

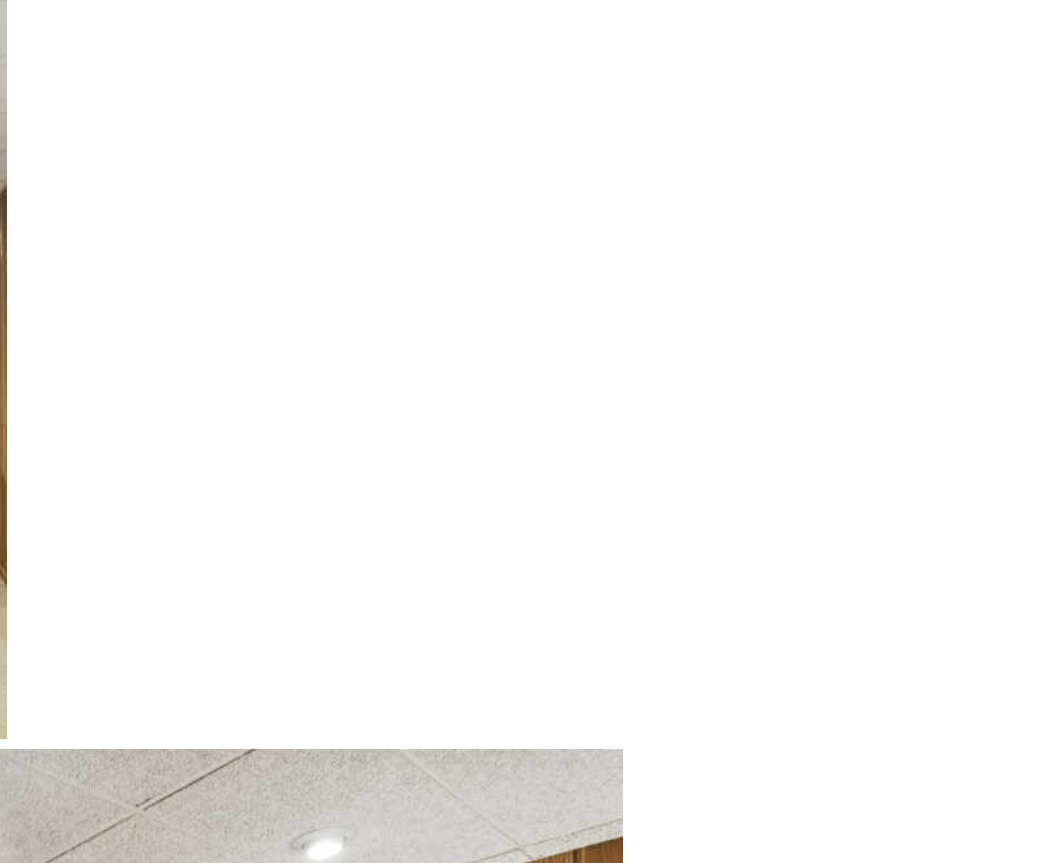
Around the corner is the Willow Walk neighborhood pool and pond, which is included in the yearly HOA. Walk to award winning schools Hunting Ridge Elementary and Fremd High School. Minutes from downtown Palatine offering Metra access, restaurants, shopping, nightlife, farmers market, and more.

Don't miss your chance to make this dream home yours - it won't last long!











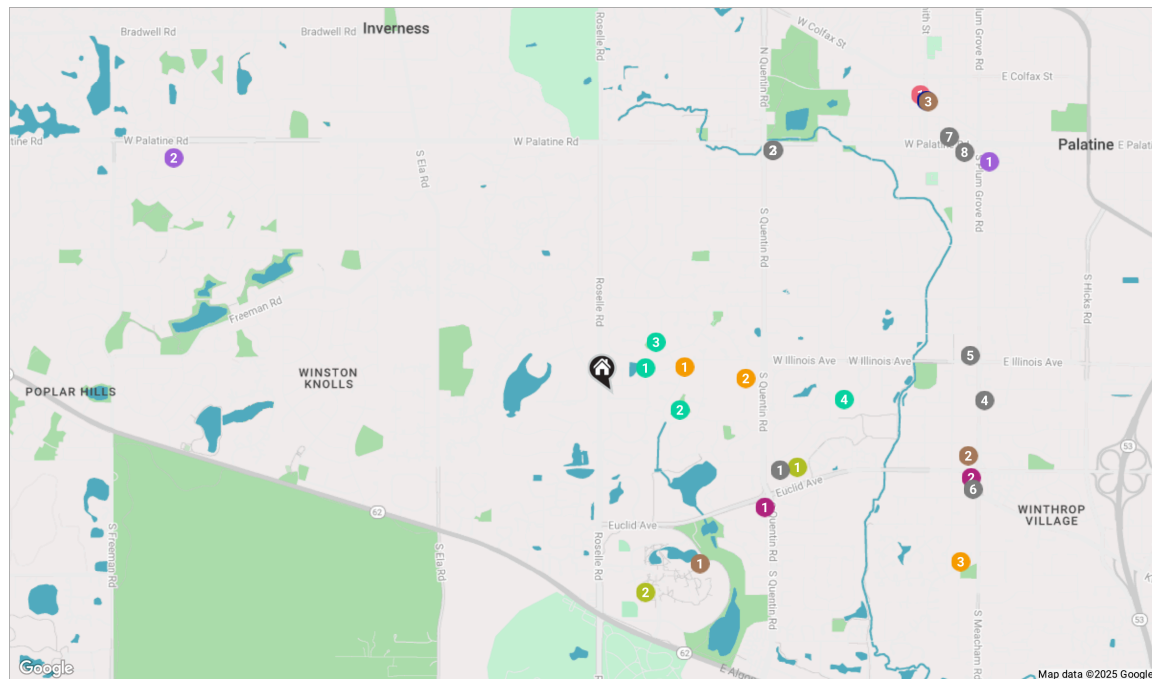
THE VILLAGE OF **PALATINE** HAS MASTERED THE ART OF BALANCE.

The growing community has a healthy mix of residents who enjoy its friendly suburban lifestyle and businesses that fuel the local economy.

The village embraces growth to support a wealth of amenities and services. The Palatine Park District has 28 parks, an 18-hole golf course, and a variety of classes from fitness and sports to arts and crafts. Palatine offers scenic views with winding trails, beautiful residential areas, and nearby Deer Grove Forest Preserve.

Palatine’s downtown business district is both charming and self-sufficient for residents. Restaurants include a mix of local favorites from classic eateries to upscale breweries, as well as a variety of local bars. The village hosts several street festivals and a popular farmers market.

Commuters have access to the Chicago Loop with the Palatine Metra station and I-90. The nearby Chicago Executive Airport offers private and corporate aircraft services.




NOTES

- 1 **Jimmy John's**
774 WEST EUCLID STREET, 0.8 MI
- 2 **Subway**
745 WEST PALATINE ROAD, 1.3 MI
- 3 **Vini's Pizza**
743 WEST PALATINE ROAD, 1.3 MI
- 4 **Donkey Inn**
923 SOUTH PLUM GROVE ROAD, 1.7 MI
- 5 **Tre Amici Pizza**
56 WEST ILLINOIS AVENUE, 1.7 MI
- 6 **Anna's Red Apple**
2121 SOUTH PLUM GROVE ROAD,
1.7 MI
- 7 **Pizza Bella**
16 NORTH BROCKWAY STREET, 2.0 MI
- 8 **Bendita Cocina Argentinean
Restaurant**
16 SOUTH BOWWELL STREET, 2.0 MI

- 1 Starbucks
1200 WEST ALGONQUIN ROAD, 0.9 MI
- 2 Hangout cafe
1937 SOUTH PLUM GROVE ROAD,
1.7 MI
- 3 Conscious Cup Coffee
Roasters - Palatine
137 WEST WOOD STREET, 2.0 MI

- 1 Walgreens
805 WEST EUCLID AVENUE, 0.9 MI
- 2 CVS
2045 PLUM GROVE ROAD, 1.7 MI

- 1 Jewel-Osco**
45 S PLUM GROVE RD, 2.0 MI

-  GYM _____
- 1 Crunch Fitness - Palatine
722 WEST EUCLID AVENUE, 0.9 MI
- 2 Foglia Foundation Health
and Recreation Center
BUILDING M, 0.9 MI

- 1 **Hunting Ridge Elementary School**
1105 WEST ILLINOIS AVENUE, 0.4 MI
- 2 **William Fremd High School**
1000 SOUTH QUENTIN ROAD, 0.6 MI
- 3 **Plum Grove Middle School**
2600 PLUM GROVE RD, 1.8 MI

- 1** **Durty Nellie's Gastropub & Concert Hub**
180 NORTH SMITH STREET, 2.0 MI

- 1 Palatine**
METRA - UNION PACIFIC NORTHWEST,
2.0 MI

- 1 Willow Walk Pool
121 W PALATINE RD, 0.2 MI
- 2 Partridge Park
1007 SOUTH MALLARD DRIVE, 0.3 MI
- 3 Mallard Park
PALATINE, 0.3 MI
- 4 Birchwood Pool
435 WEST ILLINOIS AVENUE, 1.1 MI



SHARON STAUBER

3129522029

8477970200

SHARONSTAUBER@ATPROPERTIES.COM

WWW.DEALWITHDIAMOND.COM



All specifications, features, designs, price, assessments, taxes and materials are subject to change without notice. Depicted floor plans and architectural renderings are only an artist's impression.

