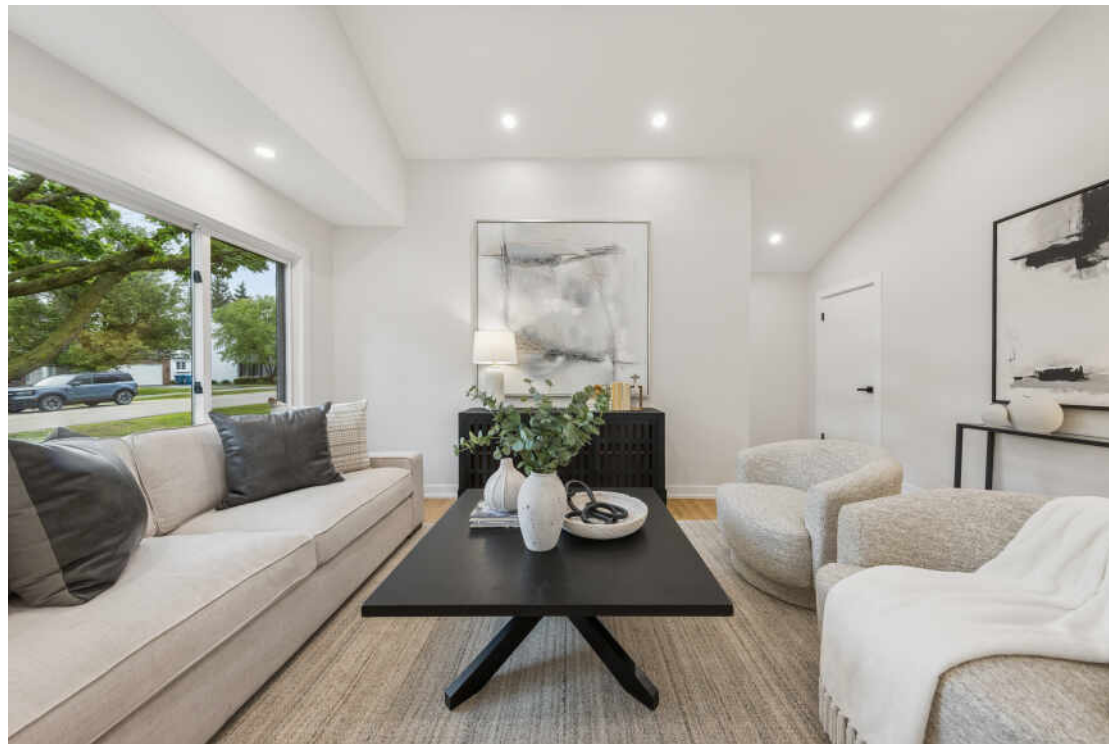


928 S MONROE STREET
HINSDALE





ROOM DIMENSIONS

LIVING ROOM : 17' × 12'

DINING AREA : 12' × 11'

KITCHEN : 16' × 9'

PRIMARY BEDROOM : 13' × 9'

PRIMARY BATHROOM : 11' × 11'

2ND BEDROOM : 13' × 10'

3RD BEDROOM : 14' × 11'

4TH BEDROOM : 12' × 11'

FAMILY ROOM : 17' × 17'

BAR : 12' × 12'

LAUNDRY ROOM : 11' × 9'

Stunning renovated 2+2 bed / 3 bath home located a few blocks away from top rated Hinsdale Central High School & Madison school & parks! This home is the perfect fit for those looking to downsize or a buyer looking for a move-in ready home in Hinsdale! Everything is bright, fresh & new! You enter into a vaulted ceiling in the living room with large windows overlooking the front yard. The open concept living & dining rooms flow effortlessly into the new kitchen with oversized center island with counter seating, new upgraded Bosch stainless appliances, custom tile backsplash and quartz countertops. A new primary suite was added with 2 closets and ensuite bathroom with dual sinks, water closet & new glass front shower. A total of 3 New bathrooms straight out of HGTV! New flooring throughout - freshly painted inside & out! The amazing lower level is something to see! With 2 additional bedrooms, a full bathroom, a large family / rec room plus adjacent custom built bar with wine closet! Also a large laundry room with new high-efficiency washer & dryer along with an additional storage / mechanical room. Oversized 2 car detached garage set a on large newly landscaped yard. Nothing like it on the market & ready to go! This home is conveniently located downtown Hinsdale & Metra with easy access to local expressways & shopping! Welcome Home!

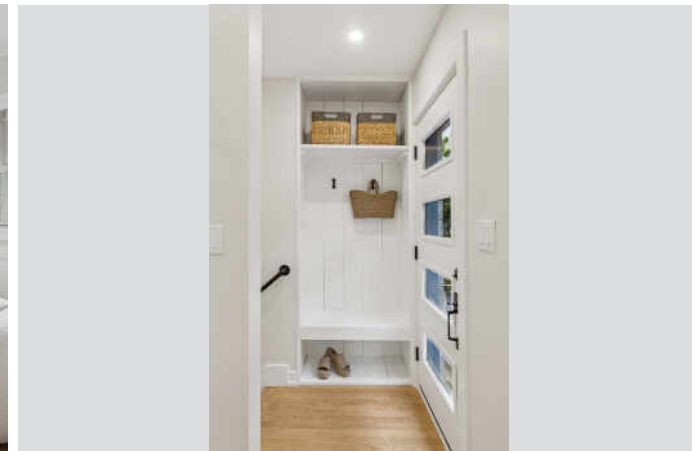
- 50x130 lot
- New driveway and landscaping
- 2 car detached garage
- Walk-to Hinsdale Central High School
- Close to Madison School, Robbins Park and Hinsdale Community House
- Close to downtown Hinsdale & Metra train
- Fully renovated home

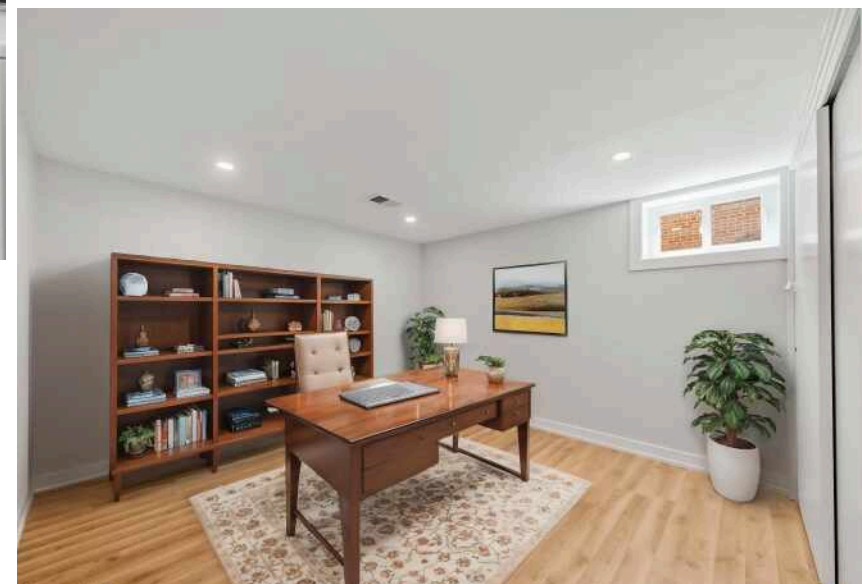
4 BEDROOM

3 BATH

TAXES: 5,819









SIZES AND DIMENSIONS ARE APPROXIMATE; ACTUAL MAY VARY.



SIZES AND DIMENSIONS ARE APPROXIMATE; ACTUAL MAY VARY.

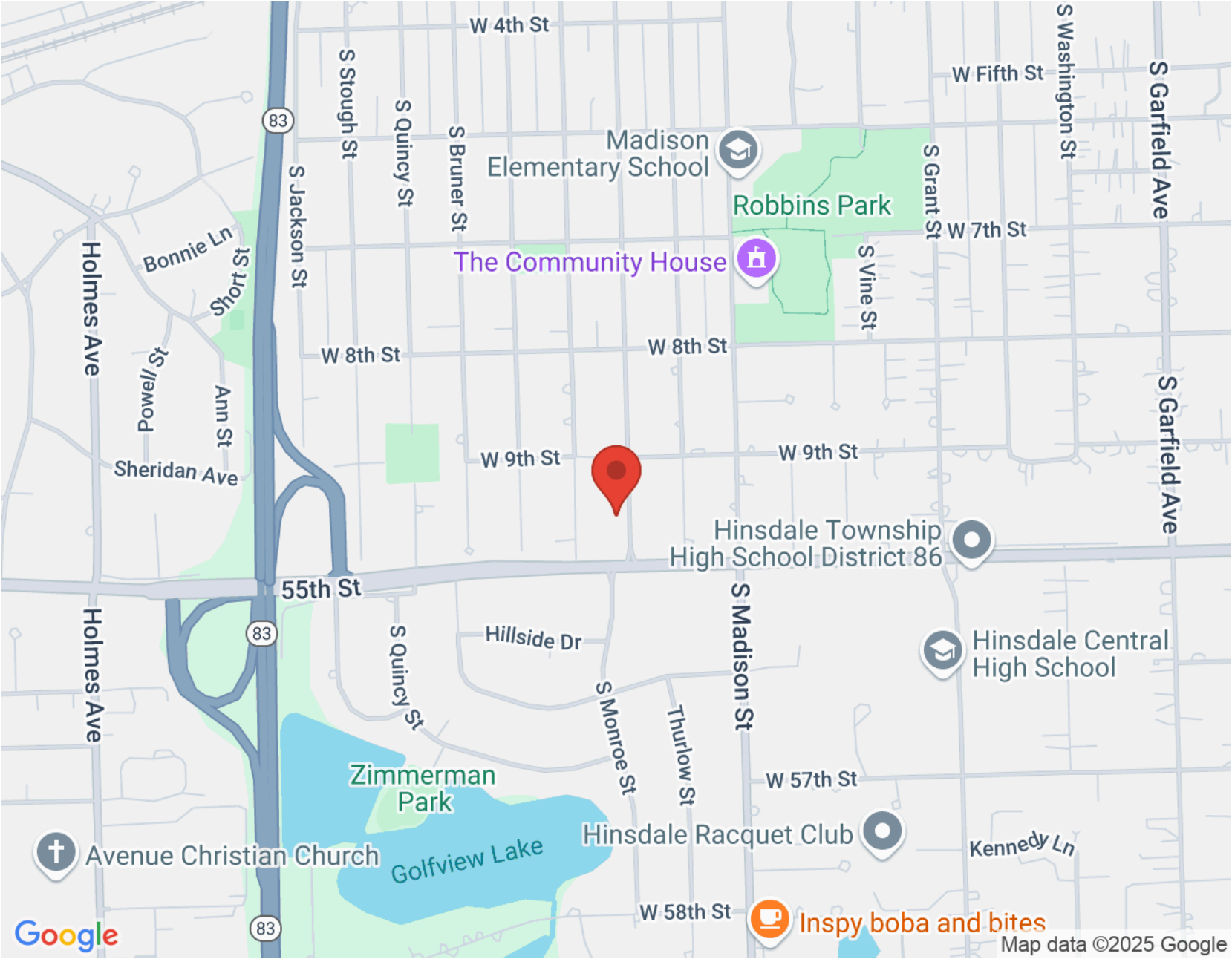


HINSDALE'S ROLLING, WOODED LANDSCAPE, HISTORIC DOWNTOWN, AND BEAUTIFUL HOMES ATTRACT SOME OF THE STATE'S MOST AFFLUENT RESIDENTS, EARNING THE SUBURB ITS RANKING AS ONE OF THE WEALTHIEST ZIP CODES IN ILLINOIS.

Downtown Hinsdale offers a step back in time. The downtown district is on the National Register of Historic Places, with several historic buildings dating back to before the community was incorporated in the 1870s. Residents and visitors will also find award-winning restaurants that will satisfy any palate along with a variety of shops, from jewelry stores and upscale boutiques to craft shops and more.

The community has a wealth of amenities such as the Hinsdale Community Swimming Pool, Katherine Legge Memorial Park, and Burlington Park, which is home to various annual events including the farmers market, Fine Arts Festival, and Uniquely Thursdays concert series. There are also numerous parks and athletic facilities for those who enjoy sports like tennis, baseball, and soccer.

Hinsdale has easy access to the Tri-State Tollway, Stevenson Expressway, and three train stations along Metra's BNSF Railway.



NOTES _____



SHEILA O'MALLEY

312.330.0027

SOMALLEY@ATPROPERTIES.COM

WWW.SOMALLEYTEAM.COM



Sheila O'MALLEY
BRINGING *SO* MUCH MORE TO BUYING & SELLING



CHRISTIE'S
INTERNATIONAL REAL ESTATE