

929 EMERALD DRIVE  
NAPERVILLE







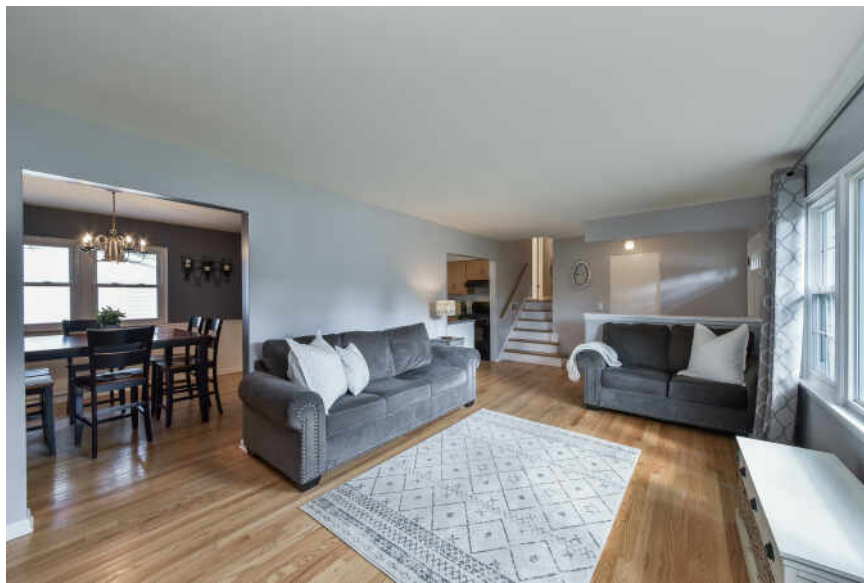
#### ROOM DIMENSIONS

- FOYER : 13' × 5'
- LIVING ROOM : 20' × 12'
- KITCHEN : 12' × 11'
- DINING ROOM : 12' × 11'
- FAMILY ROOM : 23' × 12'
- PRIMARY BEDROOM : 16' × 11'
- BEDROOM #2 : 13' × 11'
- BEDROOM #3 : 12' × 11'
- LAUNDRY ROOM : 11' × 7'
- BONUS ROOM : 11' × 9'

3 BEDROOM  
2 BATH  
TAXES: \$7,123.60 (2022)

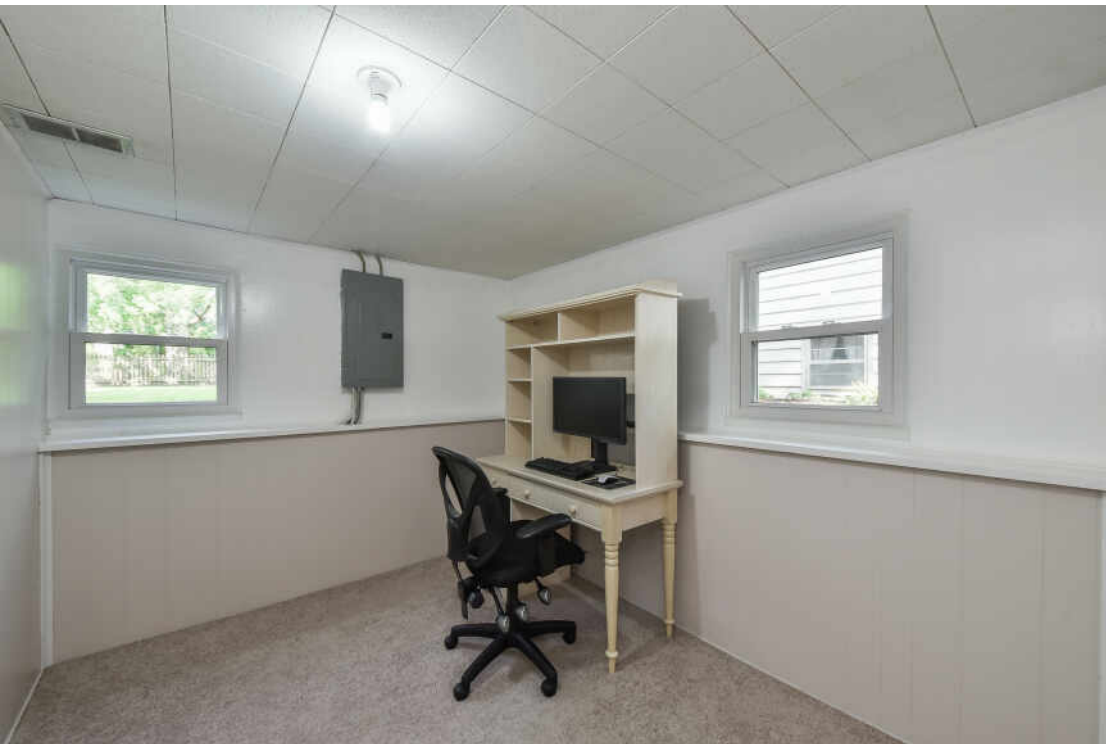
#### PROPERTY DETAILS & INFORMATION

Discover the conveniences of desirable West Highlands in this split level charmer. Beautiful light hardwood flooring, white trim, and neutral paint colors create an inviting setting for comfortable living and entertaining. The light filled living room features an expansive picture window with flankers and flows into the recently painted dining room with chair rail. The kitchen has been updated with granite countertops and backsplash (2018) as well as appliances (2015). The upper level features three bedrooms and a full, updated hall bathroom, all with newer interior doors to the hallway. The lower level features a spacious recreation area, laundry room, bonus room that's perfect for an office, playroom, etc, the second full bathroom, and a concrete crawl space. Entertain or relax on the spacious back deck in the fully fenced backyard with plenty of green space. Many updates over the years including: HVAC (2021), Sump Pump (2022), Electrical Box (2016) and most windows replaced by prior owners. Highly acclaimed District 203 schools all within close proximity! Steps to Elmwood Elementary and easy access to both Lincoln Junior HS and Naperville Central HS. This is the ultimate location within minutes to vibrant downtown Naperville, Gartner Plaza, Starbucks, Trader Joes, Knoch Park, Gartner Park, trails, and more!





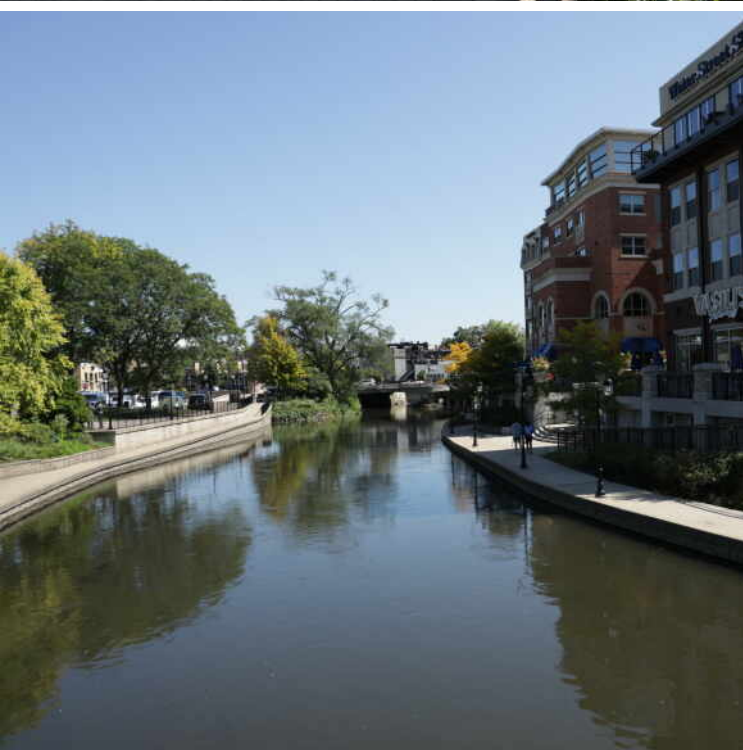












## NAPERVILLE IS A VIBRANT COMMUNITY THAT COMBINES THE AMENITIES OF A MODERN CITY WITH THE CHARM OF A SMALL TOWN.

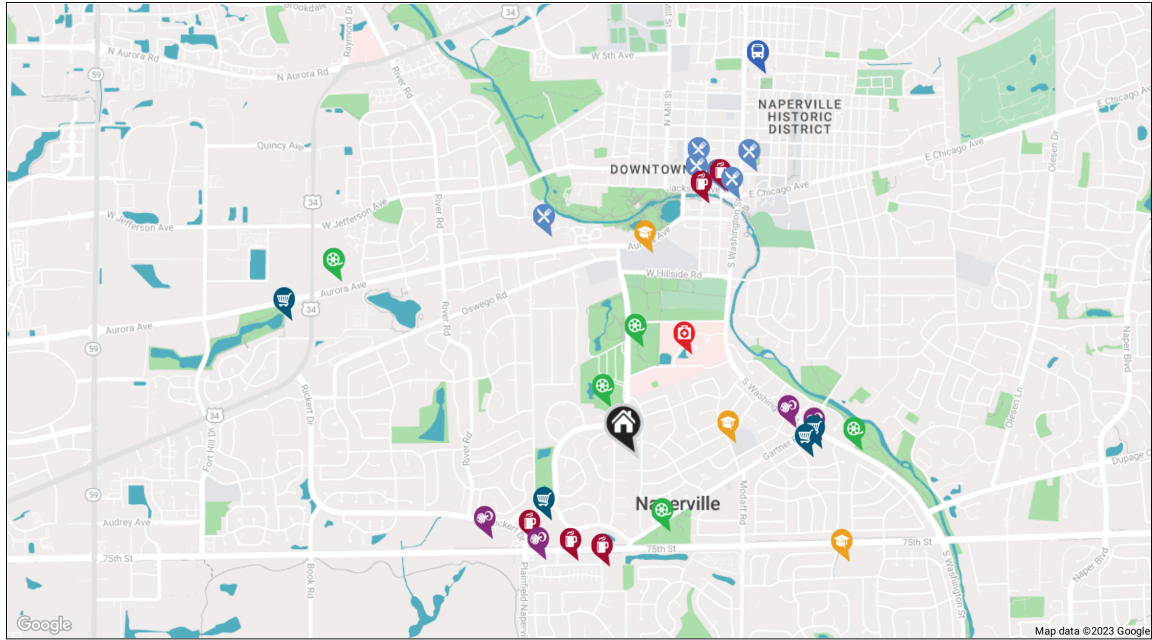
Among those amenities is a popular Riverwalk that features nearly two miles of brick paths and bridges as well as recreational facilities along the DuPage River. Nearby Centennial Beach is another attraction that draws thousands of visitors and goes from zero to 15 feet deep.

An assortment of local boutiques, well-known retailers, and fine restaurants can also be found in downtown Naperville. Meanwhile, there's endless entertainment for all ages thanks to the DuPage Children's Museum, Summer Place Theatre, Magical Starlight Theatre, and DuPage Symphony Orchestra.

While Naperville has seen significant growth over the past few decades, the city maintains a strong sense of community through annual events, from farmers markets and sidewalk sales to festivals and a summer concert series. The community's character is also preserved in the Naperville Historic District and Naper Settlement, where visitors can step back in time at an outdoor museum.

With plentiful amenities and diverse housing stock in a variety of styles and price points, Naperville has received numerous accolades and continues to capture the interest of homebuyers. The city also offers Metra and Amtrak service, providing convenient access to downtown Chicago and surrounding communities.





**RESTAURANTS**

Mesón Sabika  
1025 AURORA AVENUE, 1.1 MI

Rosebud Italian Specialties & Pizzeria  
22 EAST CHICAGO AVENUE, 1.3 MI

Sullivan's Steakhouse  
244 SOUTH MAIN STREET, 1.3 MI

Egg Harbor Cafe  
175 JACKSON AVENUE, 1.3 MI

Naperville - Lou Malnati's Pizzeria  
131 WEST JEFFERSON AVENUE, 1.4 MI

Quigley's Irish Pub  
43 EAST JEFFERSON AVENUE, 1.4 MI

**COFFEE SHOPS**

Starbucks  
860 W 75TH ST, 0.5 MI

Cornerstone Cafe Naperville  
1310 SHEPHERD DRIVE, 0.5 MI

Dunkin'  
967 W 75TH ST, 0.6 MI

Sparrow Coffee  
120 WATER STREET #110, 1.2 MI

Einstein Bros. Bagels  
22 JACKSON AVENUE, 1.3 MI

**SHOPPING**

Naperville Fresh Market  
955 W 75TH ST, 0.5 MI

Casey's Foods  
124 W GARTNER RD, 0.8 MI

Trader Joe's  
44 W GARTNER RD, 0.9 MI

Jewel-Osco  
1759 W OGDEN AVE, 1.7 MI

**HEALTH CLUBS**

HOTWORX - Naperville, IL (75th St)  
924 WEST 75TH STREET UNIT 128, 0.6 MI

Shred415 Naperville  
1003 S WASHINGTON ST #101, 0.8 MI

Anytime Fitness  
1271 RICKERT DRIVE, 0.8 MI

Orangetheory Fitness  
24 W GARTNER RD STE. 112, 0.9 MI

**HOSPITALS**

Edward Hospital - Main Campus  
801 SOUTH WASHINGTON STREET, 0.6 MI

**SCHOOLS**

Elmwood Elementary School  
1024 MAGNOLIA LN, 0.5 MI

Naperville Central High School  
440 AURORA AVE, 1.0 MI

Lincoln Junior High School  
1320 OLYMPUS DR, 1.1 MI

**ENTERTAINMENT**

Hobson West Park  
839 S WEST ST, 0.3 MI

Gartner Park  
524 W GARTNER RD, 0.4 MI

Knoch Park  
724 S WEST ST, 0.5 MI

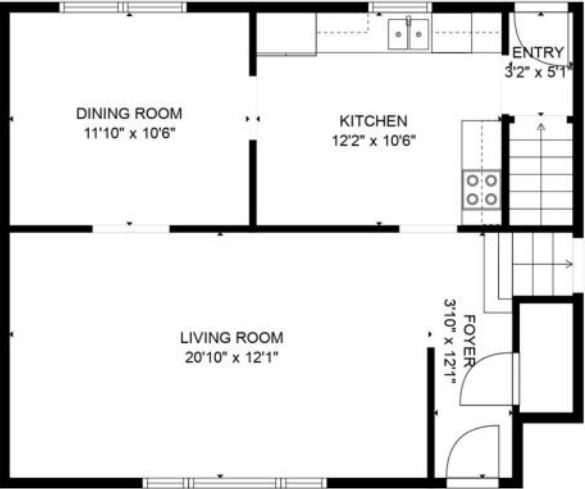
Pioneer Park  
1212 S WASHINGTON ST, 1.0 MI

Bowlero Naperville  
1515 AURORA AVE, 1.6 MI

**TRANSIT**

Naperville  
NORTH ELLSWORTH STREET, 1.9 MI

**MAIN LEVEL FLOOR PLAN**



**SECOND LEVEL FLOOR PLAN**



**LOWER LEVEL FLOOR PLAN**



MEASUREMENTS ARE CALCULATED BY CUBICASA TECHNOLOGY. DEEMED HIGHLY RELIABLE BUT NOT GUARANTEED.





## KIM DALASKEY

847.208.8978

630.637.0997

KDALASKEY@MONARQUERE.COM

WWW.MONARQUERE.COM



CHRISTIE'S  
INTERNATIONAL REAL ESTATE