



929 W ALTGELD ST, PENTHOUSE
LINCOLN PARK

@properties®

CHRISTIE'S
INTERNATIONAL REAL ESTATE



ROOM DIMENSIONS

LIVING ROOM : 24' × 17'

DINING ROOM : 12' × 8'

KITCHEN : 12' × 8'

PRIMARY BEDROOM : 15' × 13'

WALK IN CLOSET : 10' × 6'

SECOND BEDROOM : 11' × 11'

THIRD BEDROOM : 11' × 10'

MAIN FLOOR DECK : 12' × 12'

ROOFTOP DECK : 66' × 25'

3 BEDROOM

2 BATH

TAXES: \$14,702.37

ASSESSMENTS: \$151

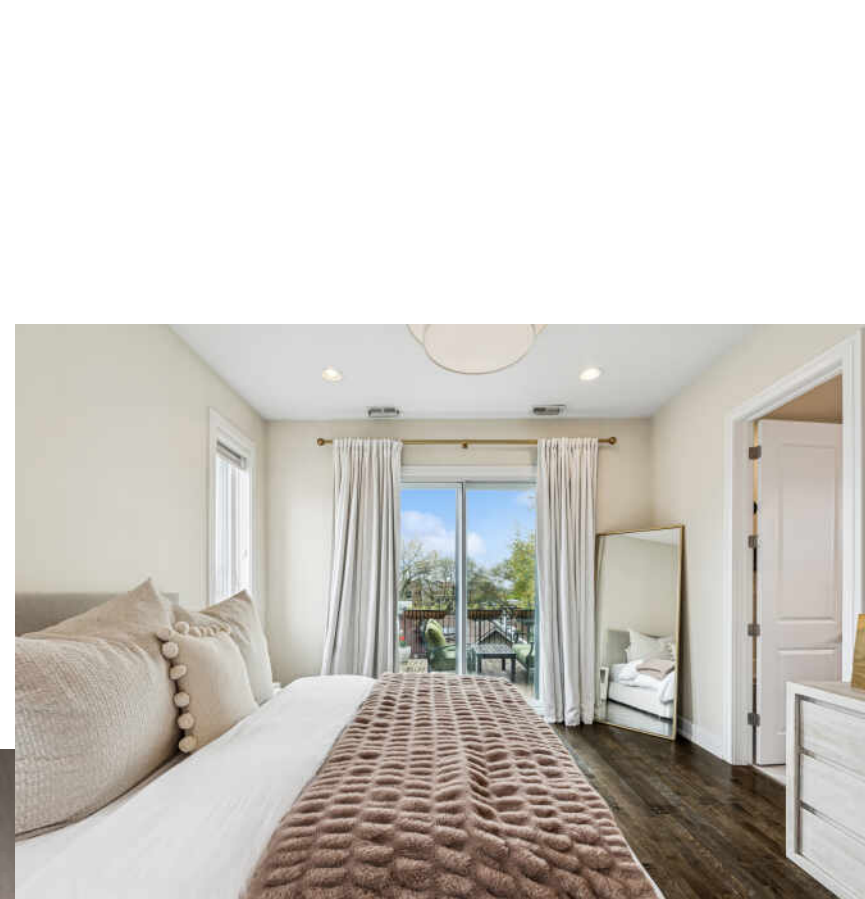
INCREDIBLE LINCOLN PARK PENTHOUSE W/ ROOFTOP DECK

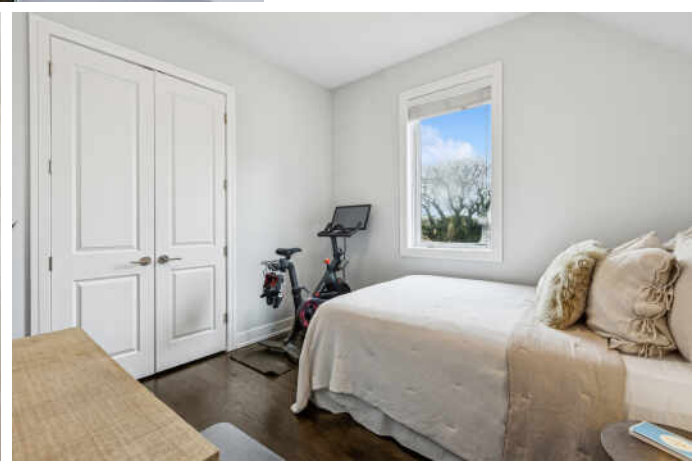
This 3 bed, 2 bath all-brick penthouse condo delivers space, style, and unbeatable outdoor living in one of the best pockets of Lincoln Park. Step inside to soaring ceilings, incredible natural light, and hardwood floors throughout. The open layout includes a spacious living room with elegant wainscoting, a gas fireplace, and custom built-ins—perfect for relaxing or entertaining. The kitchen features sleek contemporary cabinetry, quartz countertops, high-end appliances, and a large island with seating and workspace. The separate dining area makes hosting easy. All three bedrooms are generously sized. The primary suite includes a walk-in closet, private deck, and a spa-like bathroom with heated floors, dual vanities, quartz counters, a steam shower, and deep jetted tub. Head upstairs to your private rooftop deck with panoramic skyline views, an indoor wet bar, and built-in sound system—ideal for summer entertaining or peaceful evenings. Extra highlights include surround sound throughout, assigned garage parking space, extra storage unit, steps to the Red, Brown, and Purple EL lines, walk to shops, restaurants, cafes, and parks. This condo checks every box for luxury city living.

Link to photos:

<https://tour.vht.com/434460510/IDX>











LINCOLN PARK RESIDENTS HAVE IT ALL – FROM THE ARTS TO ITS FAMED ZOO – RIGHT IN THEIR BACKYARD.

The neighborhood includes quiet tree-lined residential blocks, DePaul University, and two major museums in addition to the Lincoln Park Zoo, one of the country's oldest zoos. There's also a wide array of entertainment, eateries, and hotspots.

An evening in Lincoln Park might include seeing a play at the acclaimed Steppenwolf Theatre and dining at a Michelin-rated restaurant or a quaint neighborhood café. Sports fans will find as many dive bars with the game on as foodies will find fine-dining restaurants with al-fresco seating.

Lincoln Park is just as delightful by day. Residents are close to the lakefront and North Avenue Beach, parks, farmers markets, festivals, and countless shops, ranging from upscale boutiques on Armitage to larger retailers at the Clybourn Corridor.

Housing stock ranges from smaller townhomes and vintage condominiums to rehabs and new construction. Buyers around DePaul University can find loft condominiums in converted factories and warehouses. On its eastern edge, Lincoln Park features beautiful vintage brownstones along with high-rises with breathtaking views of the lake, park, North Pond Nature Sanctuary, and city skyline.

Located just two miles from downtown, Lincoln Park offers residents a quick commute to work. Public transportation abounds, with the CTA's Brown and Red lines serving the neighborhood in addition to several bus routes and Lake Shore Drive.



NOTES



JULIANA YEAGER

YEAGER TEAM

(773) 732-1063

JULIANAYEAGER@ATPROPERTIES.COM

WWW.THEYEAGERTEAM.COM



BENJAMIN YEAGER

YEAGER TEAM

7736061966

YT@ATPROPERTIES.COM

WWW.YEAGERTEAM.COM



CHRISTIE'S
INTERNATIONAL REAL ESTATE