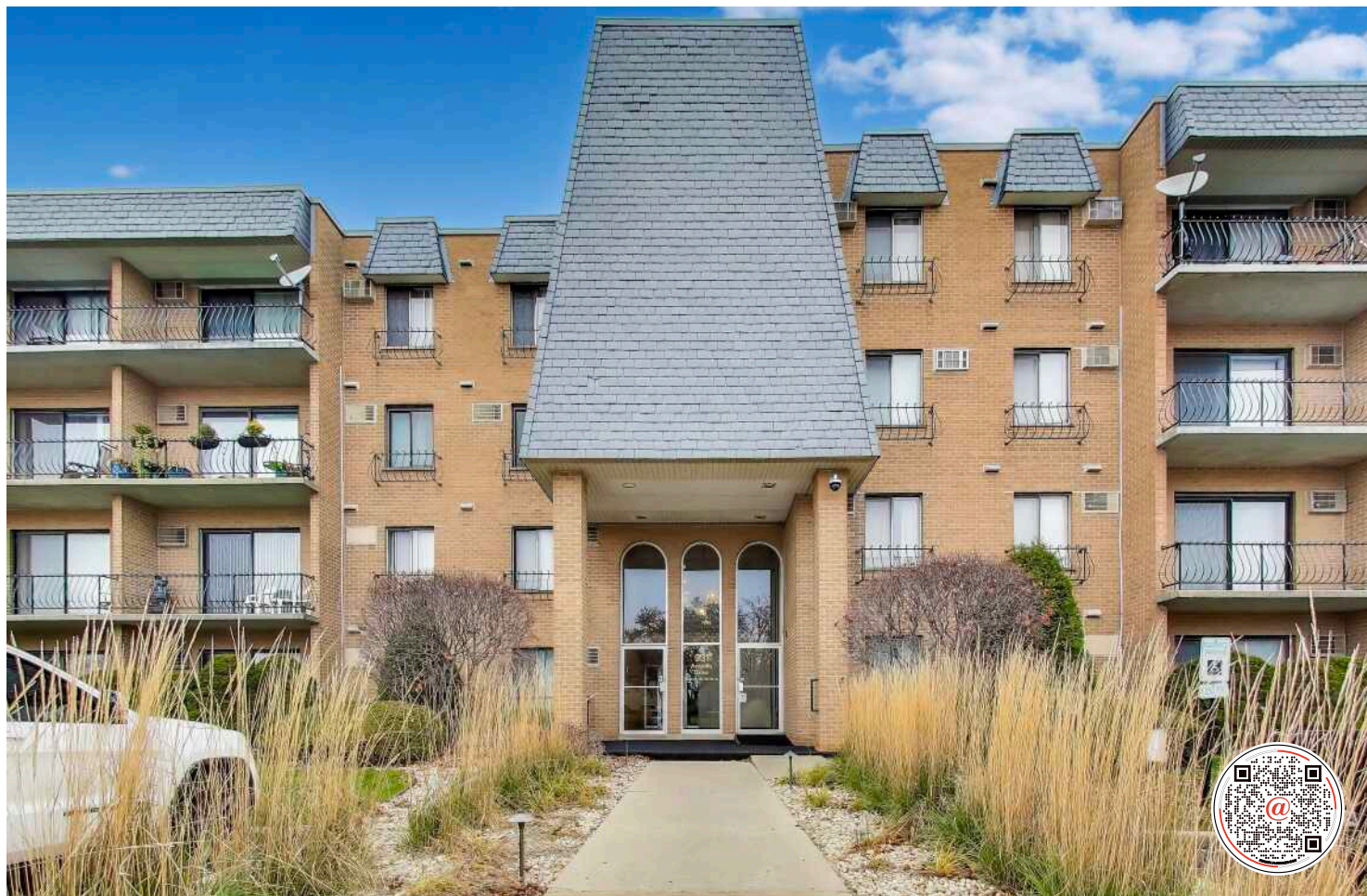
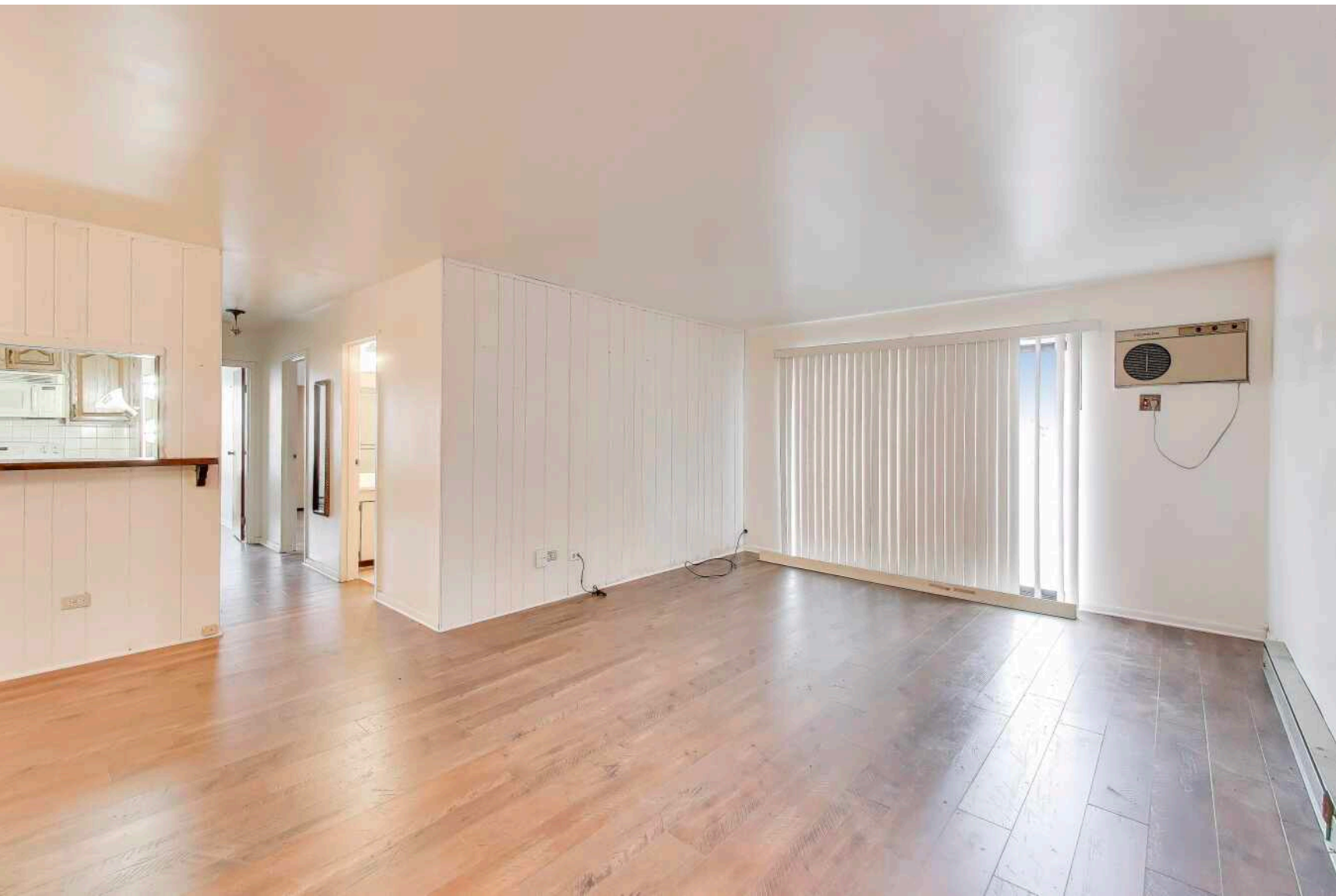


931 W ARQUILLA DRIVE #133
GLENWOOD





ROOM DIMENSIONS

LIVING ROOM : 19' × 13'

DINING ROOM : 16' × 10'

KITCHEN : 11' × 11'

PRIMARY BEDROOM : 11' × 14'

SECOND BEDROOM : 12' × 11'

2 BEDROOM

2 BATH

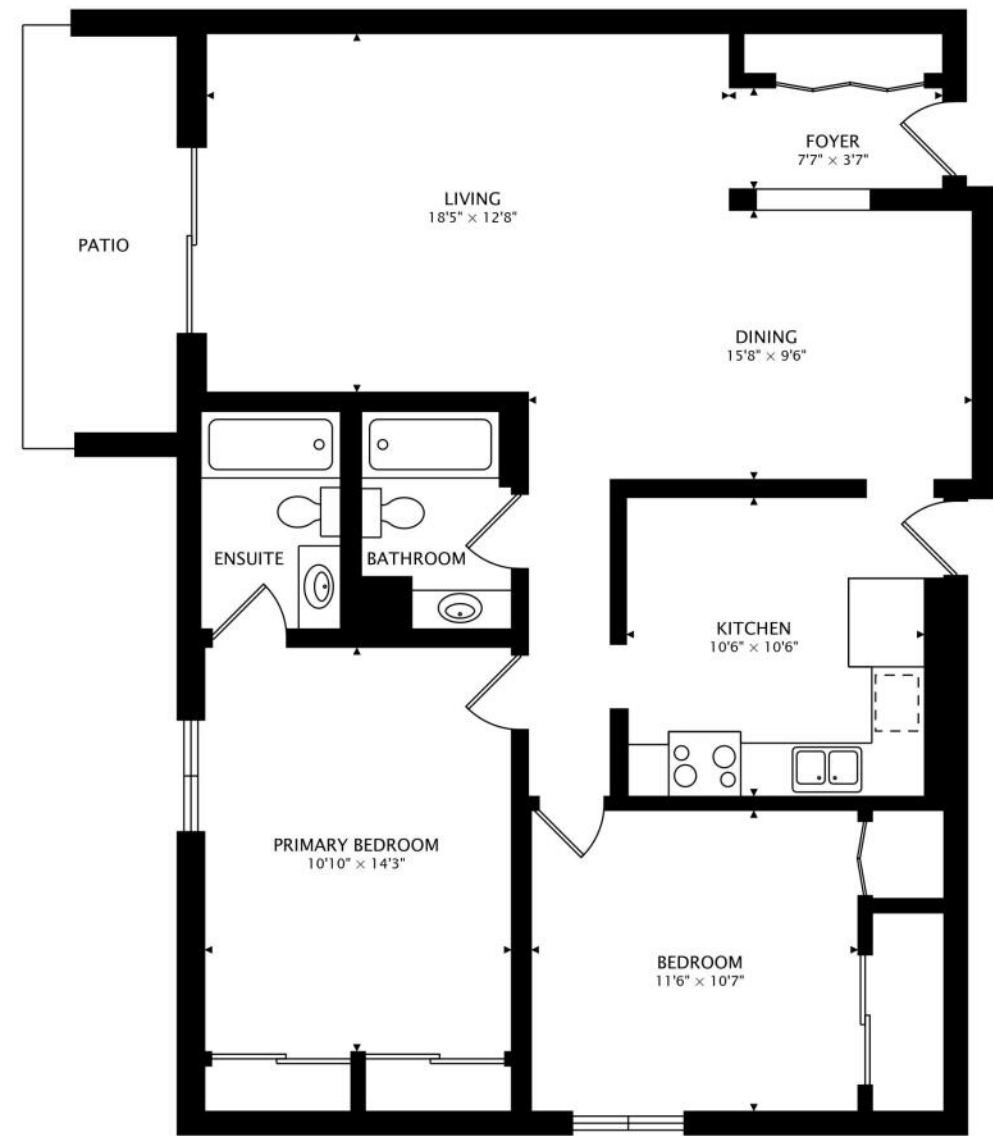
TAXES: \$4,077

ASSESSMENTS: \$356 / MONTH

Your search is over! Step into this great condo located in a beautifully maintained and secure building. This spacious unit features 2 large bedrooms-including a primary bedroom with dual closets-and 2 full baths. The unit comes with 2 parking spaces. Enjoy comfort year-round with three wall A/C units. The generous living room opens to a semi-private balcony where you can relax and take in the peaceful, tree-lined view. No rentals and no pets are permitted in the building, ensuring a quiet and stable community. This is an estate sale. Units 133 and 113 are being sold separately but can also be purchased together as a bundle.







1100 sq ft + 78 sq ft PATIO



NOTES _____



DUVAL WILLIAMS

240.855.8505

312-254-0200

DUVALW@ATPROPERTIES.COM

INSTAGRAM: DUVAL_ATPROPERTIES



All specifications, features, designs, price, assessments, taxes and materials are subject to change without notice. Depicted floor plans and architectural renderings are only an artist's impression.

