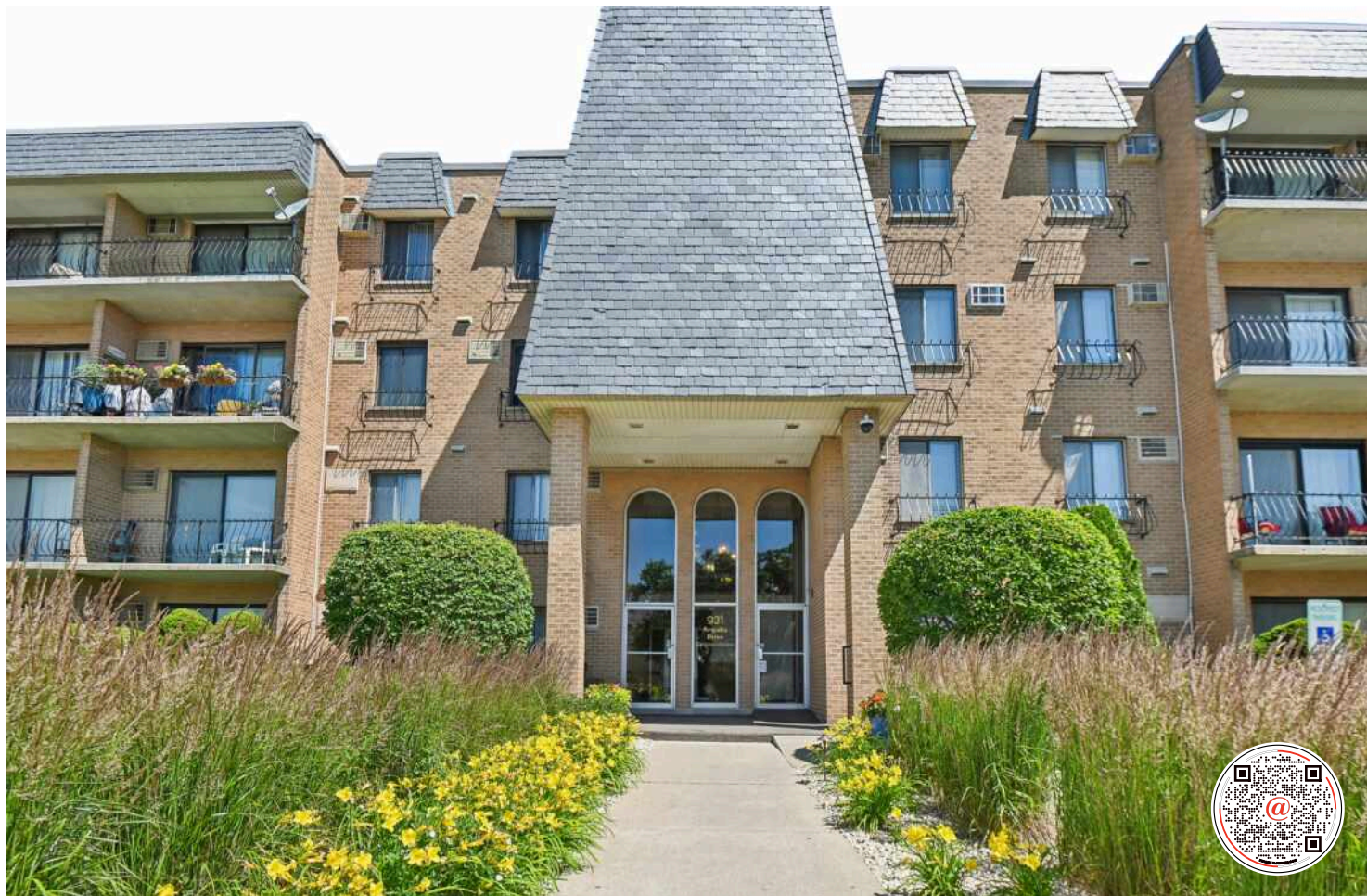


931 W ARQUILLA DRIVE #316  
GLENWOOD







#### ROOM DIMENSIONS

LIVING ROOM : 18' × 14'

DINING ROOM : 10' × 10'

KITCHEN : 10' × 9'

PRIMARY BEDROOM : 17' × 11'

SECOND BEDROOM : 13' × 11'

2 BEDROOM

2 BATH

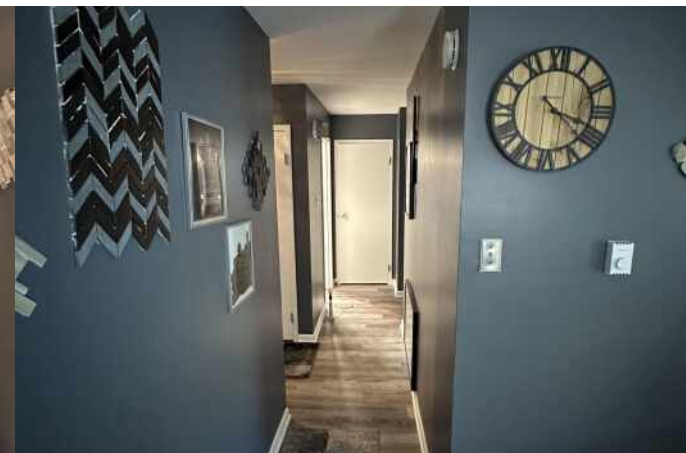
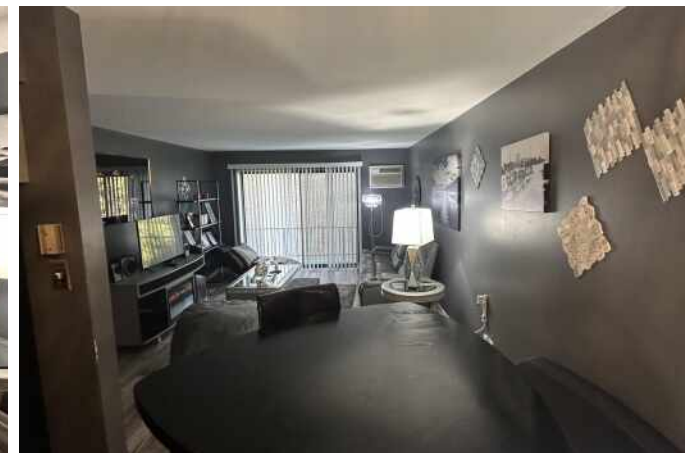
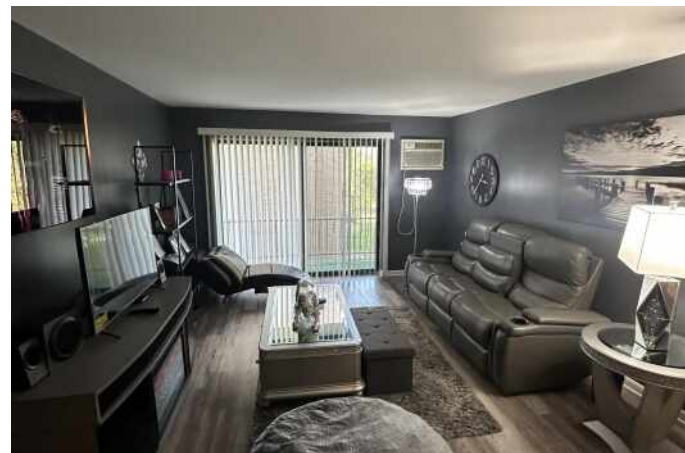
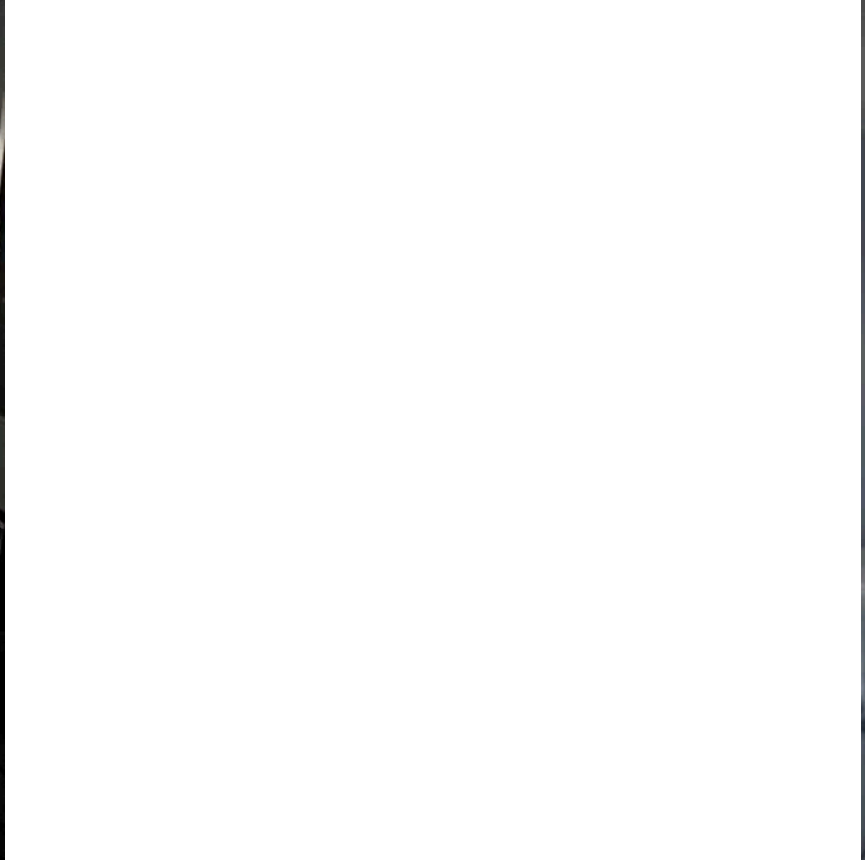
TAXES: \$2,789

ASSESSMENTS: \$325 / MONTH

## PROPERTY DESCRIPTION

Your search is over! Stop by this newly renovated condo in this beautifully maintained and secure building. You'll have 2 spacious bedrooms (dual closets in the primary bedroom) 2 full baths and this sale includes a garage space! This unit has 3 A/C wall units. Step out to semi private balcony from spacious LR & enjoy the privacy & treed view. No rentals and no pets.

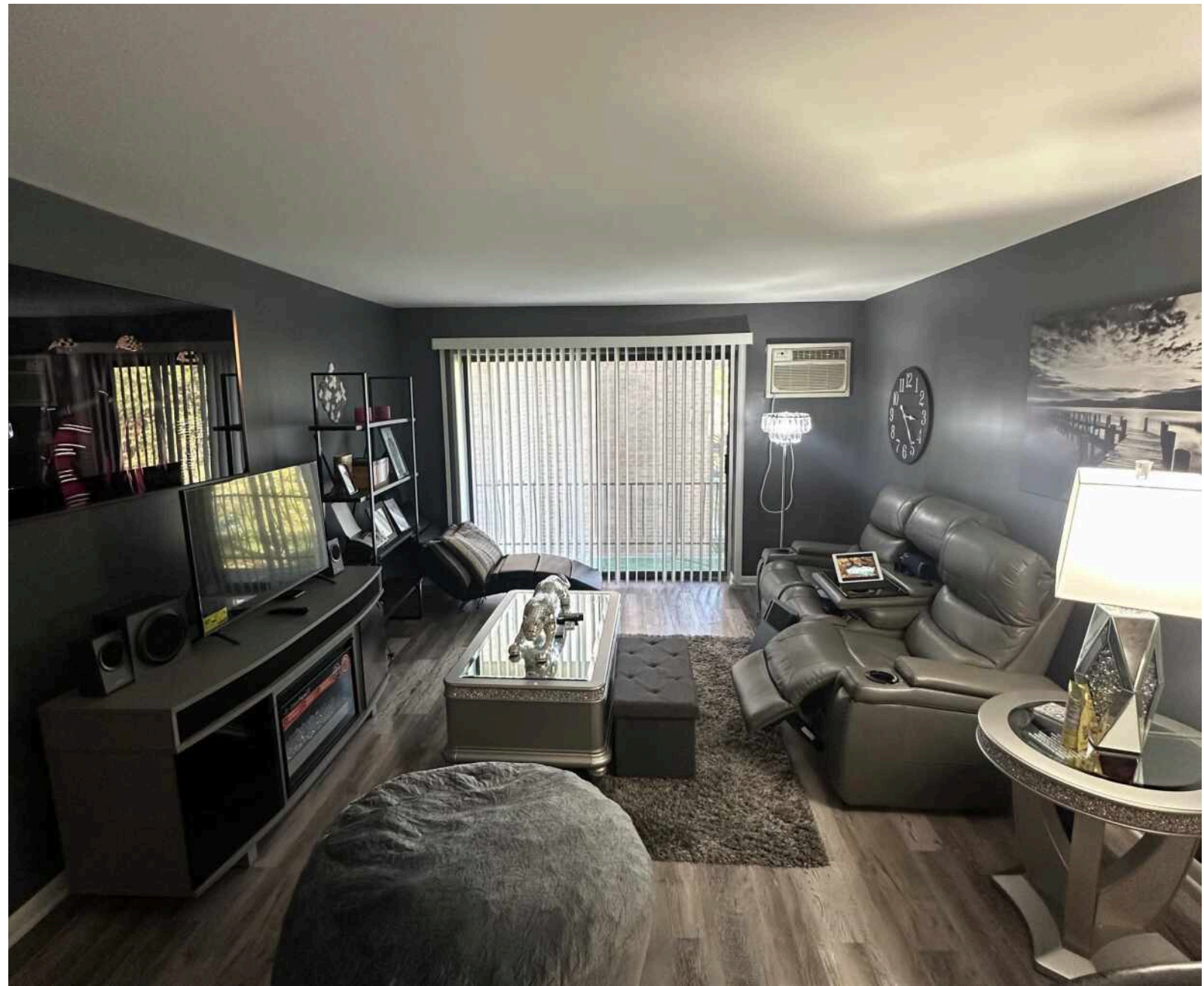




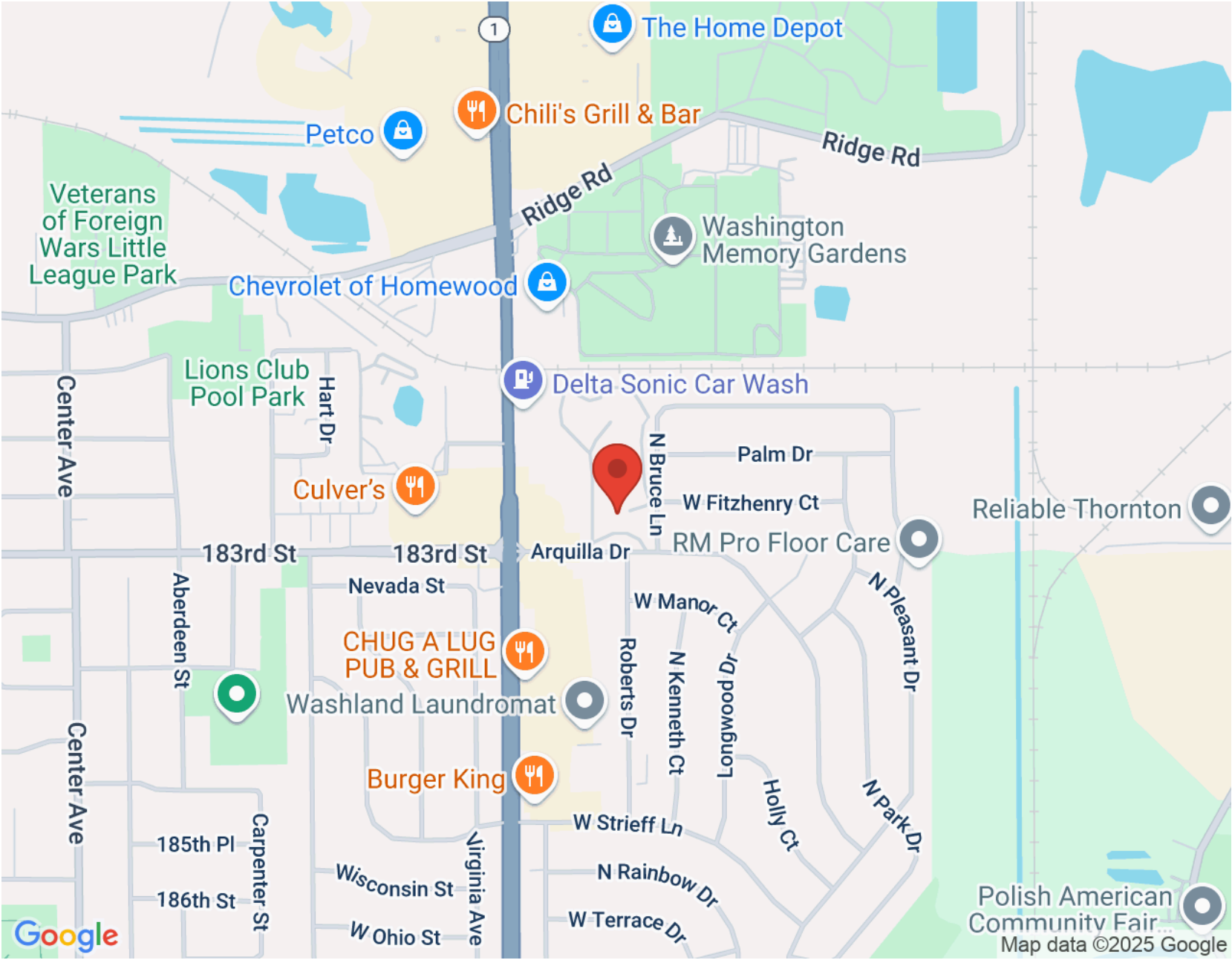












NOTES \_\_\_\_\_

\_\_\_\_\_

\_\_\_\_\_

\_\_\_\_\_

\_\_\_\_\_

\_\_\_\_\_

\_\_\_\_\_

\_\_\_\_\_

\_\_\_\_\_

\_\_\_\_\_

\_\_\_\_\_



## DUVAL WILLIAMS

240.855.8505

312-254-0200

DUVALW@ATPROPERTIES.COM

INSTAGRAM: DUVAL\_ATPROPERTIES



All specifications, features, designs, price, assessments, taxes and materials are subject to change without notice. Depicted floor plans and architectural renderings are only an artist's impression.

