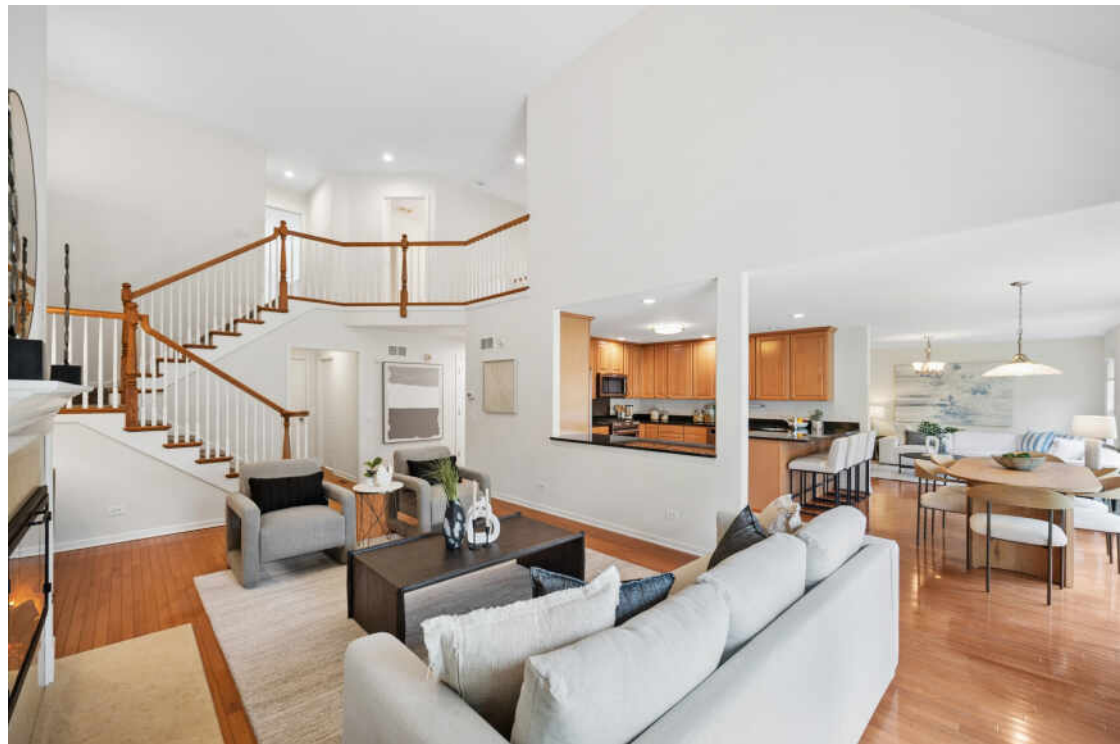


932 CHESTNUT STREET
DEERFIELD





4 BEDROOM
3 BATH

Experience refined living in sought-after Chestnut Manor, ideally situated just one block from the Metra and downtown Deerfield dining, shopping, parks, and highly regarded Deerfield schools. Offering more than 3,000 square feet, this fee-simple row home combines impressive scale, flexibility, and rare in-town convenience.

A dramatic two-story foyer opens into the expansive Great Room, where soaring 17-foot cathedral ceilings and a wood-burning fireplace with gas starter create a striking focal point. The open-concept living and dining spaces flow seamlessly into the oversized kitchen, featuring newer stainless steel appliances, generous prep space, and abundant cabinetry.

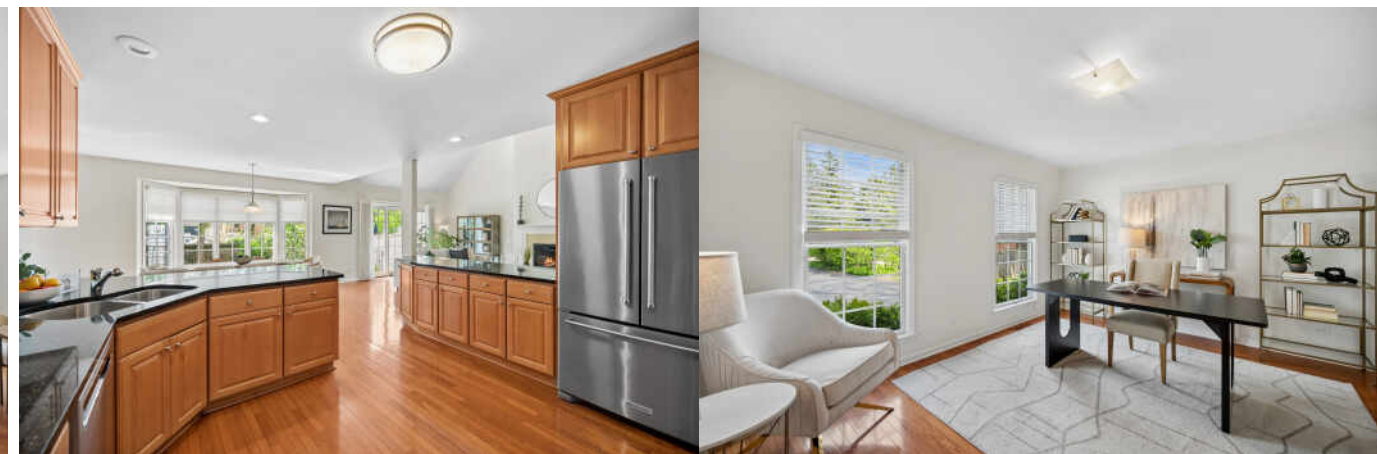
Adjacent to the kitchen, a comfortable family room provides flexible living space ideal for a den, playroom, media room, or formal dining area. A main-floor bedroom and full bath offer an ideal setup for guests, a private office, or multigenerational living.

Upstairs, two spacious secondary bedrooms accompany a luxurious primary suite with 11-foot tray ceilings, a walk-in closet, and an oversized ensuite bath complete with dual vanities, jacuzzi tub, and separate shower.

The basement offers exceptional expansion potential with 9-foot ceilings, freshly epoxied floors, new lighting, and a roughed-in bath already in place. Whether envisioned as a recreation space, home gym, guest suite, or additional bedroom, the possibilities are extensive.

Outside, enjoy a beautifully landscaped backyard retreat and oversized two-car garage – all within one of Deerfield's most convenient and walkable locations, where the train, downtown, and everyday amenities are just steps away.









Floor Plan Created By Cubicasa App. Measurements Deemed Highly Reliable But Not Guaranteed.



DEERFIELD BOASTS THE BEST OF BOTH WORLDS - THE AMENITIES AND CONVENIENCES OF CITY LIVING WITH THE CHARM OF A SMALL TOWN.

Touting a variety of housing options, Deerfield offers condominiums, townhomes, and single-family homes in a wide range of architectural styles and prices.

When it comes to amenities, Deerfield checks all the boxes. Deerfield Square includes an assortment of shops, restaurants, and boutique workout studios, while the Sachs Recreation Center offers an indoor pool, tennis courts, gymnasiums, fitness classes, and more. Another popular attraction is the Deerfield Historic Village, where residents and visitors can explore buildings dating back to the 1800s.

The community is home to Deerfield High School, which ranks among the top high schools in Illinois, according to *U.S. News and World Report*.

With two Metra stations and proximity to the Tri-State Tollway and Edens Expressway, Deerfield puts residents within easy reach of downtown Chicago, O'Hare International Airport, and numerous corporate headquarters.



BILLIE DIAMOND

(312) 399-0525

BDIAMOND@ATPROPERTIES.COM

