

934 N KENILWORTH AVENUE
OAK PARK





ROOM DIMENSIONS

LIVING ROOM : 15' × 20'

DINING ROOM : 13' × 16'

BREAKFAST NOOK : 12' × 8'

PRIMARY BEDROOM : 16' × 11'

KITCHEN : 8' × 20'

SECOND BEDROOM : 13' × 8'

TANDEM : 14' × 7'

THIRD BEDROOM : 10' × 12'

FAMILY ROOM : 16' × 10'

OFFICE : 14' × 15'

BONUS : 10' × 10'

3 BEDROOM

2.1 BATH

TAXES: \$19,870

Welcome to 934 N Kenilworth on the sought-after Kenilworth Avenue Parkway in NW Oak Park. With Horace Mann Elementary across the street and Lindbergh Park around the corner, the setting is hard to beat - just blocks from Wonder Works Children's Museum and Oak Park's favorite deli.

Inside, a circular floor plan connects generous living and dining spaces. The kitchen opens to a bright breakfast nook overlooking the deck and yard, with a stylish powder room on the main level.

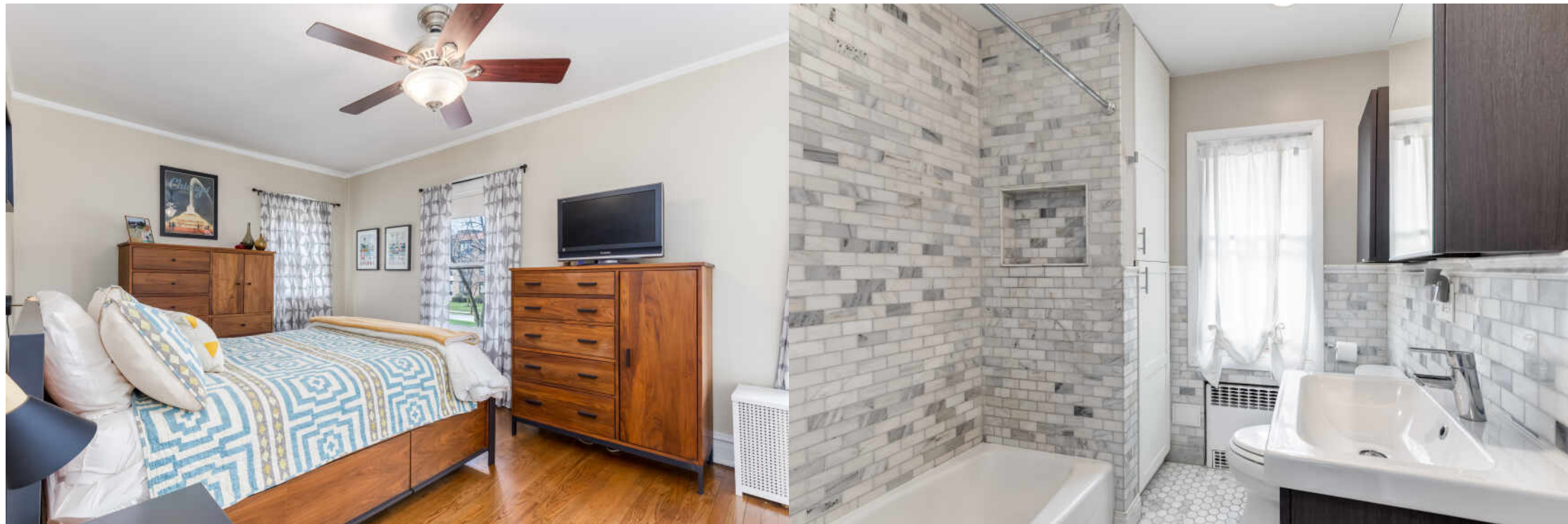
Upstairs offers three bedrooms and an updated bath. The second bedroom includes a tandem space - ideal for an office, dressing room, or reading nook - and a private balcony.

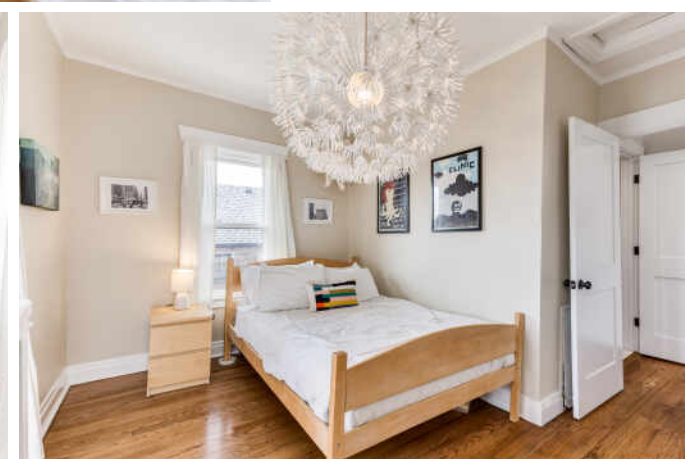
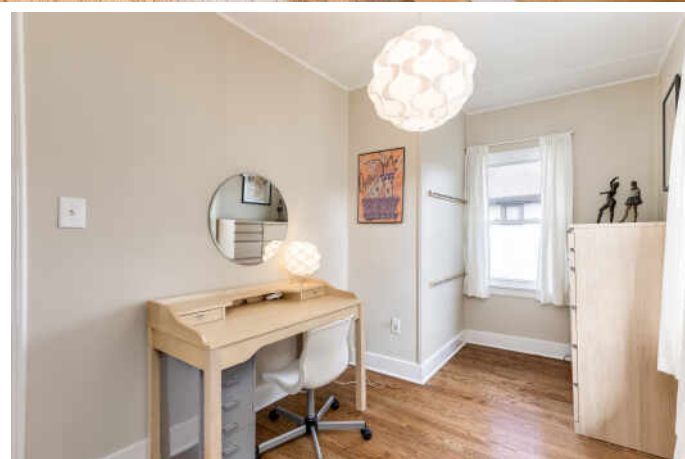
The finished basement adds a comfortable family room, dedicated office area, enclosed flex room, full bath, and laundry.

Lovingly maintained for the past 20 years, this home is as welcoming as it is well cared for - perfect for everyday living, easy entertaining, and enjoying the best of the neighborhood.











OAK PARK IS THE COOL KID ON THE BLOCK AS FAR AS COMMUNITIES GO.

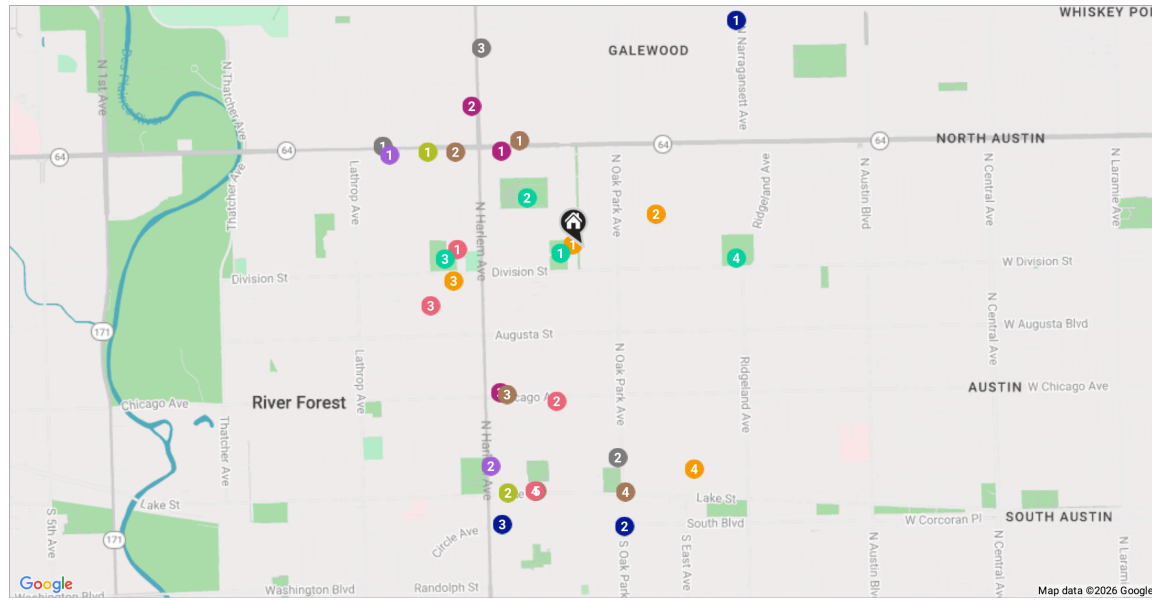
Located just 10 miles west of downtown Chicago, the community has a distinctly urban, creative vibe and has long been home to artists who have risen to the top of their fields.

Renowned architect Frank Lloyd Wright spent the first 20 years of his career in Oak Park, building more homes in the area than anywhere else in the world. Novelist Ernest Hemingway attended Oak Park and River Forest High School, where he excelled in English classes and wrote for the school paper.

Oak Park is noted for its unique mix of home styles including Victorian, Queen Anne, Craftsman, and Prairie School. The community is comprised of three historic districts, including the Frank Lloyd Wright Historic District.

In addition to an active arts community, locals enjoy ample recreational opportunities including public parks, outdoor pools, an ice-skating rink, and the Oak Park Conservatory. Meanwhile, downtown Oak Park offers a number of boutiques, national retailers, noted restaurants, and galleries.

Transportation is easily accessible with the Eisenhower Expressway and public transportation options like the CTA Green and Blue Lines and the Oak Park Metra station. The village's Augusta Boulevard is part of the Grand Illinois Trail.



RESTAURANTS

- 1 Johnnie's Beef
7500 WEST NORTH AVENUE, 0.9 MI
- 2 Hemmingway's Bistro
211 NORTH OAK PARK AVENUE, 0.9 MI
- 3 Maria's Mexican Restaurant
1905 NORTH HARLEM AVENUE, 0.9 MI

COFFEE

- 1 Starbucks Coffee Company
7112 WEST NORTH AVENUE, 0.5 MI
- 2 Yolk Diner
7301 WEST NORTH AVENUE, 0.6 MI
- 3 Broken Tart
1108 CHICAGO AVENUE, 0.7 MI
- 4 Courageous OAK PARK
736 LAKE STREET, 1.0 MI
- 5 Wise Cup
1018 LAKE STREET, 1.0 MI

SHOPPING

- 1 The UPS Store
7061 WEST NORTH AVENUE, 0.5 MI
- 2 FedEx Office Print & Ship Center
1720 NORTH HARLEM AVENUE, 0.7 MI
- 3 Alioto Gift Shop
1118 CHICAGO AVENUE, 0.7 MI

GROCERY

- 1 Fresh Thyme Market
7501 WEST NORTH AVENUE, 0.9 MI
- 2 Trader Joe's
483 NORTH HARLEM AVENUE, 1.0 MI

GYM

- 1 Studio19 Barre & Fitness
7361 WEST NORTH AVENUE, 0.7 MI
- 2 FFC Oak Park
1114 LAKE ST, 1.0 MI

SCHOOLS

- 1 Horace Mann Elementary School
921 NORTH KENILWORTH AVENUE, 0.0 MI
- 2 St Giles Catholic School
1034 LINDEN AVENUE, 0.3 MI
- 3 Grace Lutheran School
7300 DIVISION STREET, 0.5 MI
- 4 Oak Park and River Forest High School
201 NORTH SCOVILLE AVENUE, 1.0 MI

ENTERTAINMENT

- 1 Fenwick High School Priory Campus
7200 DIVISION STREET, 0.5 MI
- 2 Frank Lloyd Wright Home & Studio
951 CHICAGO AVENUE, 0.6 MI
- 3 Concordia University Chicago
7400 AUGUSTA STREET, 0.7 MI

- 4 Classic Cinemas Lake XQ
1022 LAKE ST, 1.0 MI

TRANSIT

- 1 Galewood Metra Station SP + Parking Lot
CHICAGO, 1.1 MI
- 2 Oak Park Ave & South Blvd / CTA Green Line
OAK PARK, 1.1 MI
- 3 Harlem/Lake
1 S HARLEM AVE, 1.2 MI

PARKS

- 1 Field Park
935 WOODBINE AVENUE, 0.1 MI
- 2 Lindberg Park
1150 NORTH MARION STREET, 0.3 MI
- 3 Priory Park
7354 DIVISION STREET, 0.6 MI
- 4 Taylor Park
400 W. DIVISION STREET, 0.6 MI

NOTES



VICTORIA WITT

1 7087901319

7088480200

VWITT@ATPROPERTIES.COM