

**945 SUMMIT STREET**  
DOWNERS GROVE



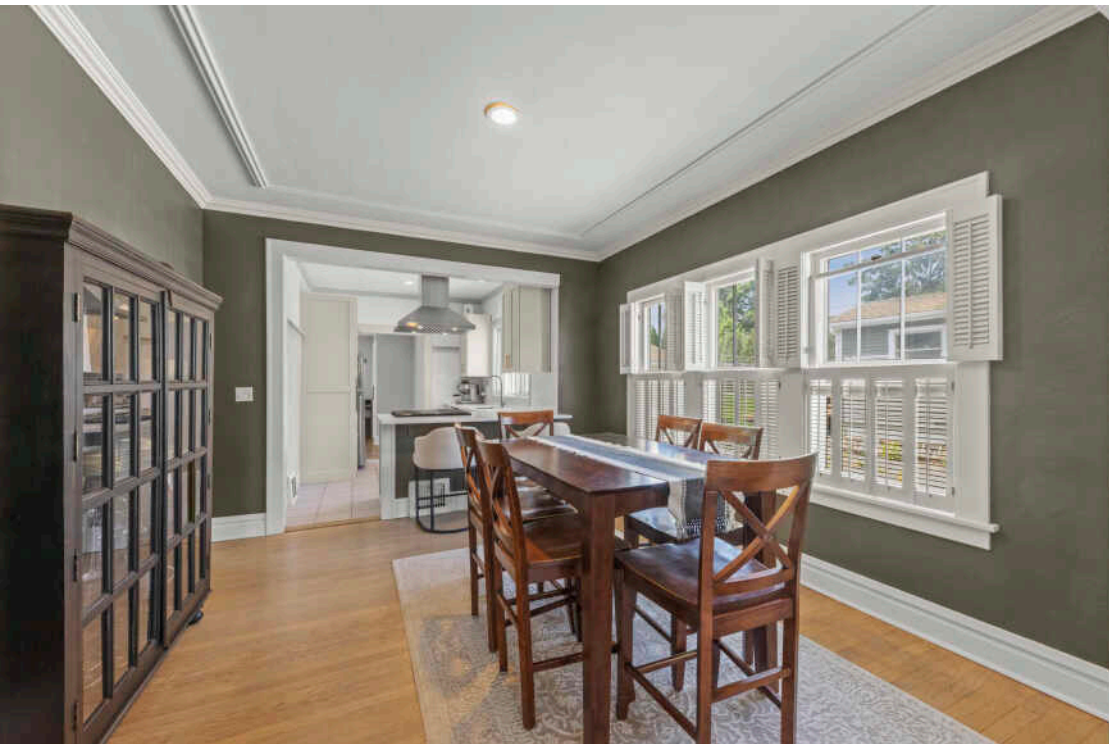
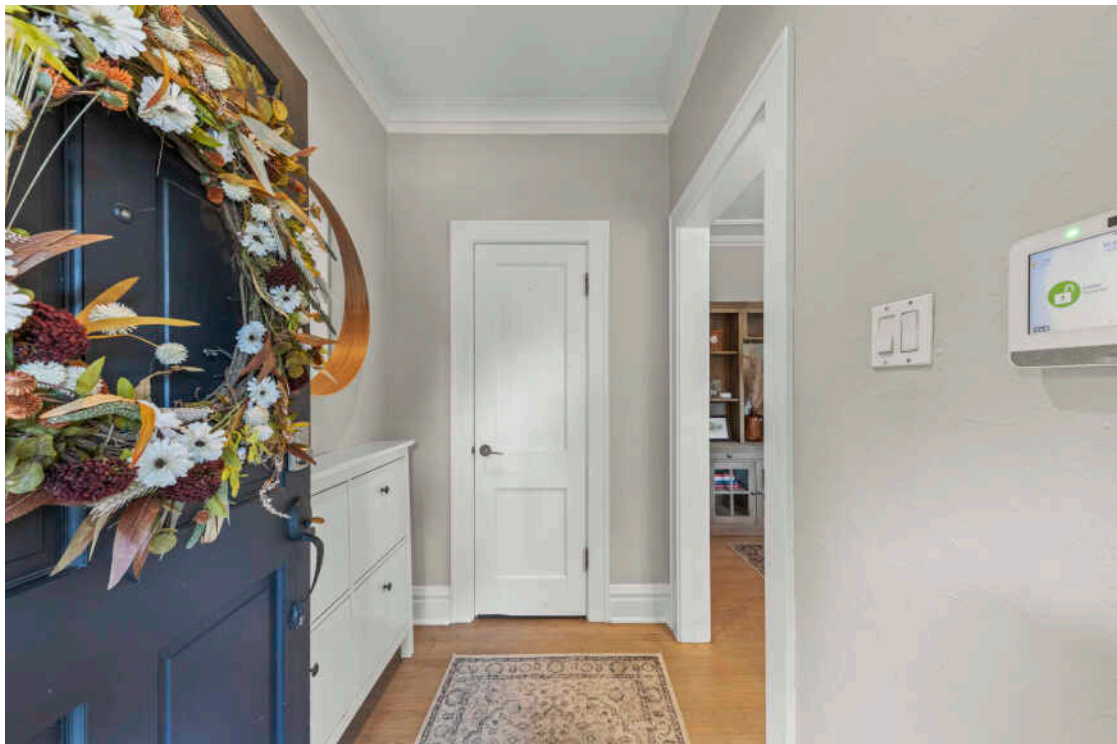
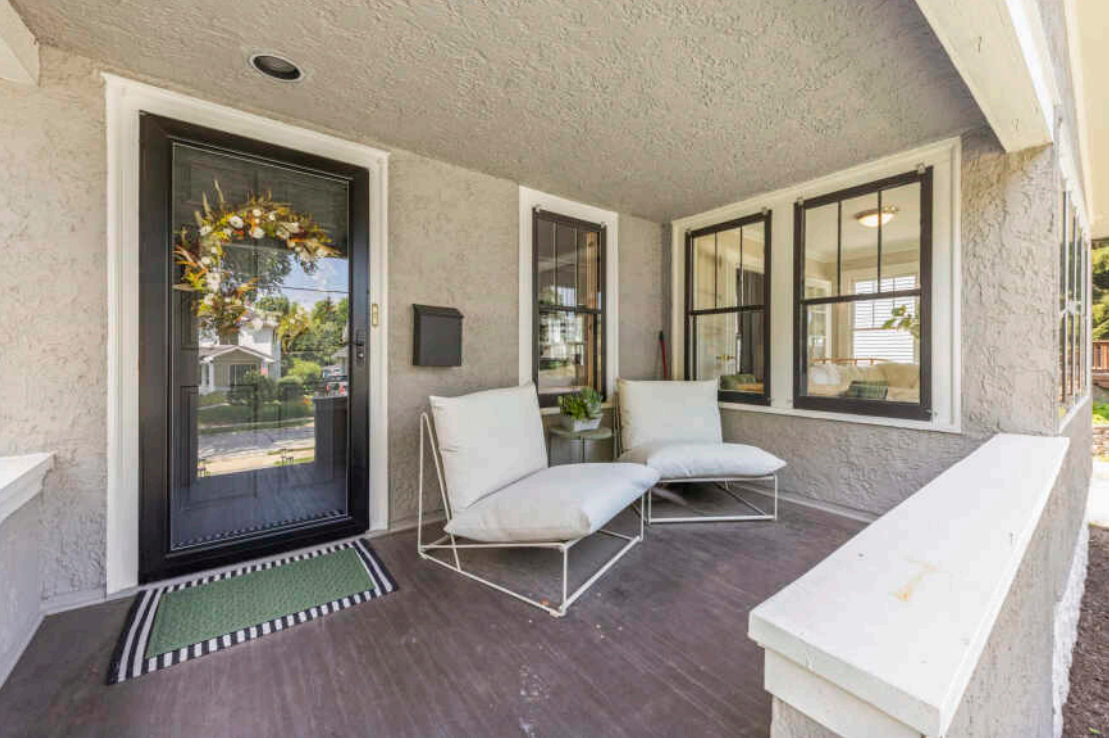


3 BEDROOM  
2 BATH  
TAXES: \$7,736

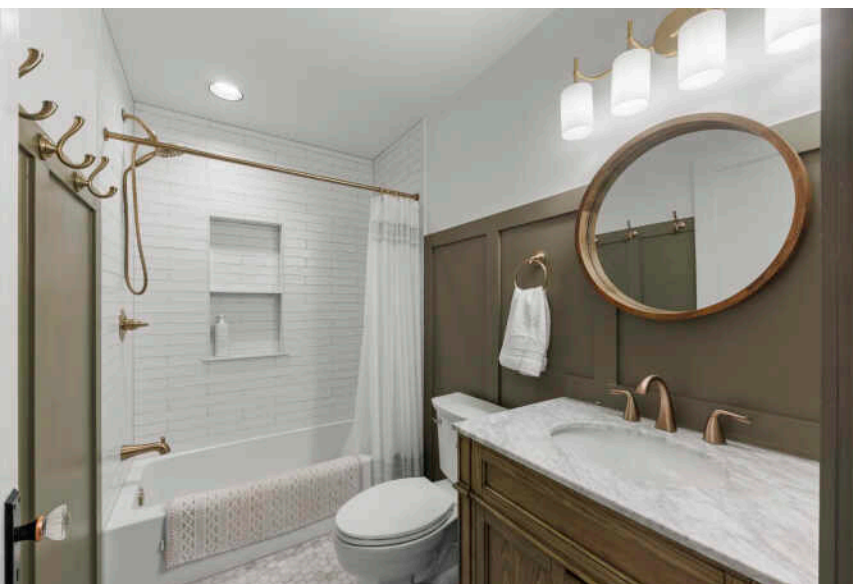
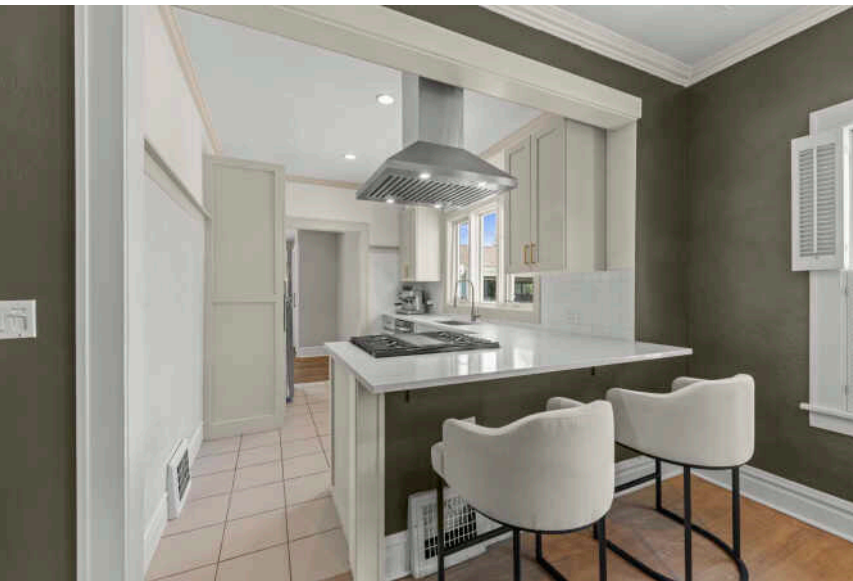
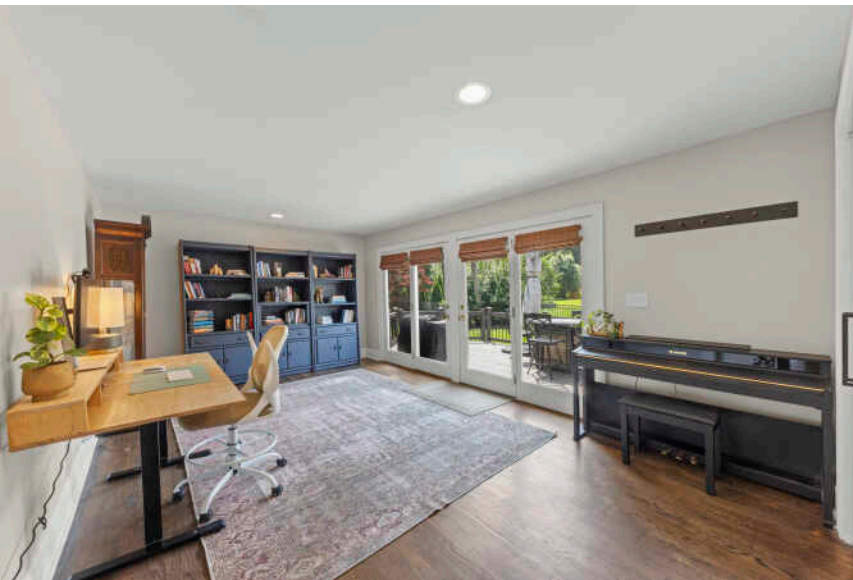
## CHARMING BUNGALOW ONE BLOCK FROM DOWNTOWN DOWNERS GROVE

Charm and character are the essence of this craftsman style historical bungalow in the amazing Randall Park neighborhood just steps from Downtown Downers Grove. The current owners just completed a brand new kitchen (2025), new bathroom (2024), new roof (2025 with a 40-year shingle warranty), new HVAC (2023) and more! Enter through the charming porch to a foyer and a spacious living room with 9 foot ceilings, arched doorways, oversized moldings and plenty of natural light. The main floor boasts 2 bedrooms and a full bath, a front sunroom that is perfect for a home office or playroom, a formal dining room for entertaining and a large family room off the kitchen. Upstairs you will find the primary suite with new large closets and a roomy bath with soaking tub. The full basement is dry and is partially finished... perfect for a home gym, another office, additional living area, etc. The deck off the rear family room overlooks the back and side yards. The exterior stucco and trim have been recently painted and the black steel fence was recently added. Located just one block south of Downtown Downers Grove means you are steps to shopping and restaurants, 25-minute express Metra trains to the city, The Lincoln Center and so much more. Welcome Home to this coveted location!

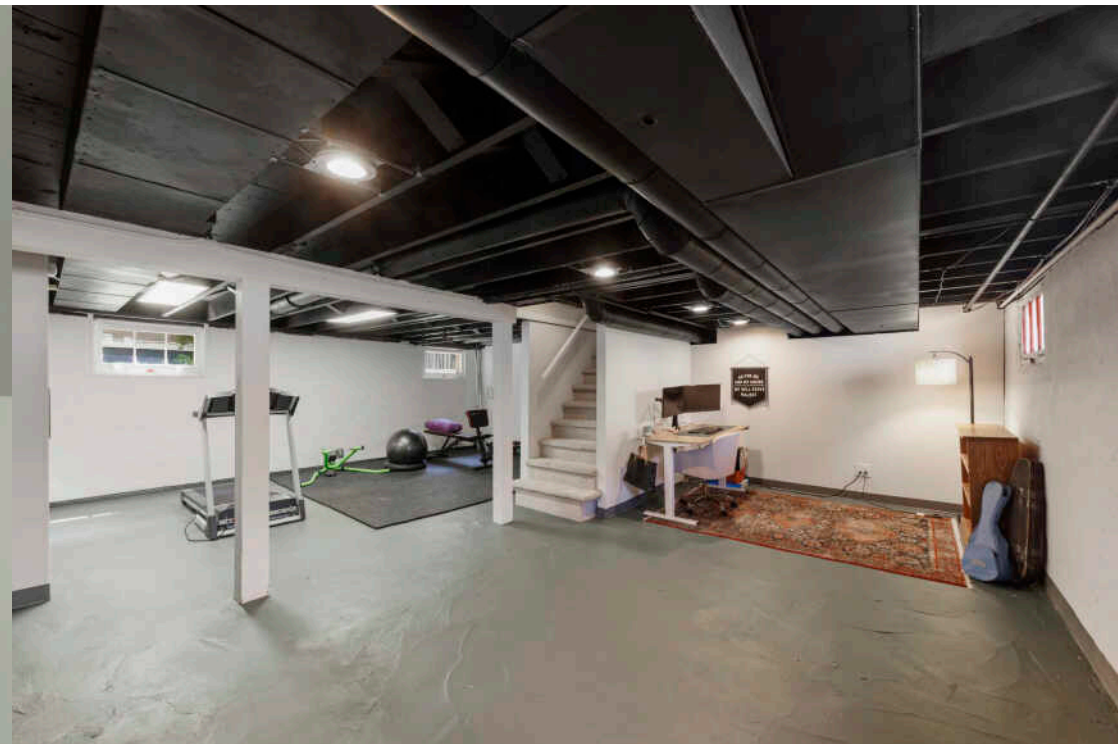




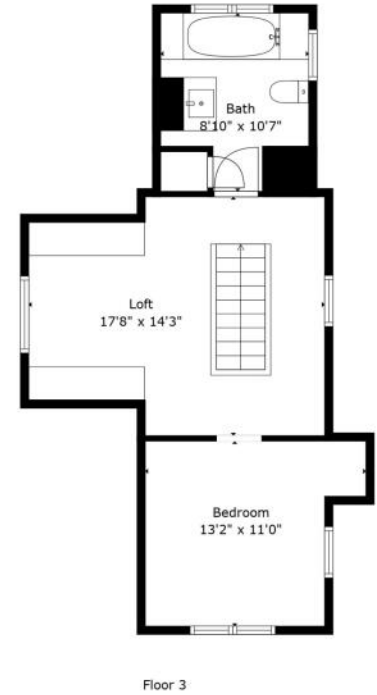
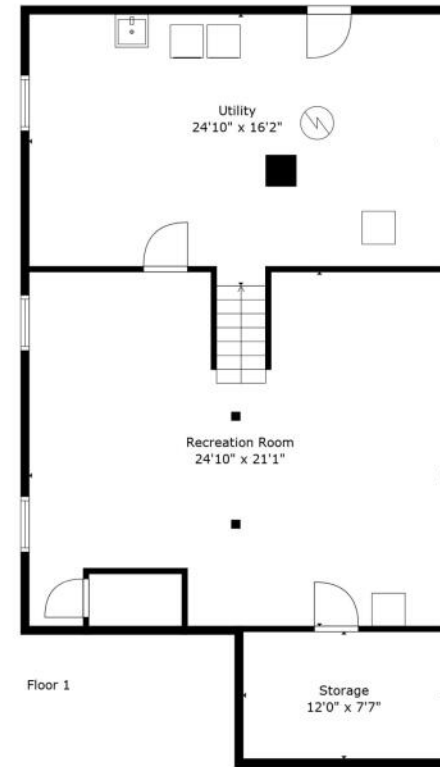
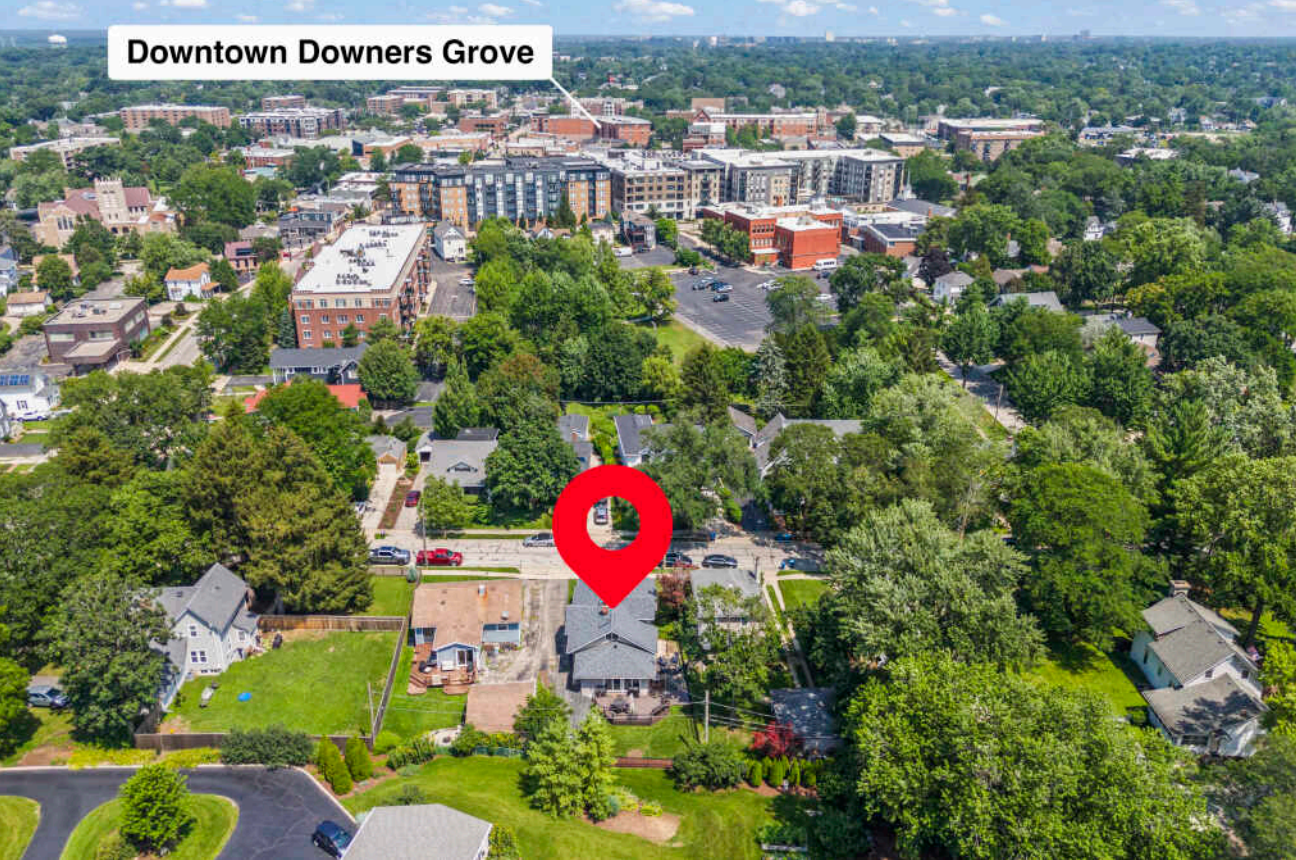












**Total GLA: 1756 sq. ft | Total: 2926 sq. ft**  
Floor 1 - Below grade: (Excluded areas 1070 sq. ft)  
Floor 2: 1345 sq. ft  
Floor 3: 411 sq. ft (Excluded areas 100 sq. ft)

Sizes And Dimensions Are Approximate. Actual May Vary.





## FORTUNATELY, **DOWNERS GROVE** DOESN'T LET FAME GO TO ITS HEAD.

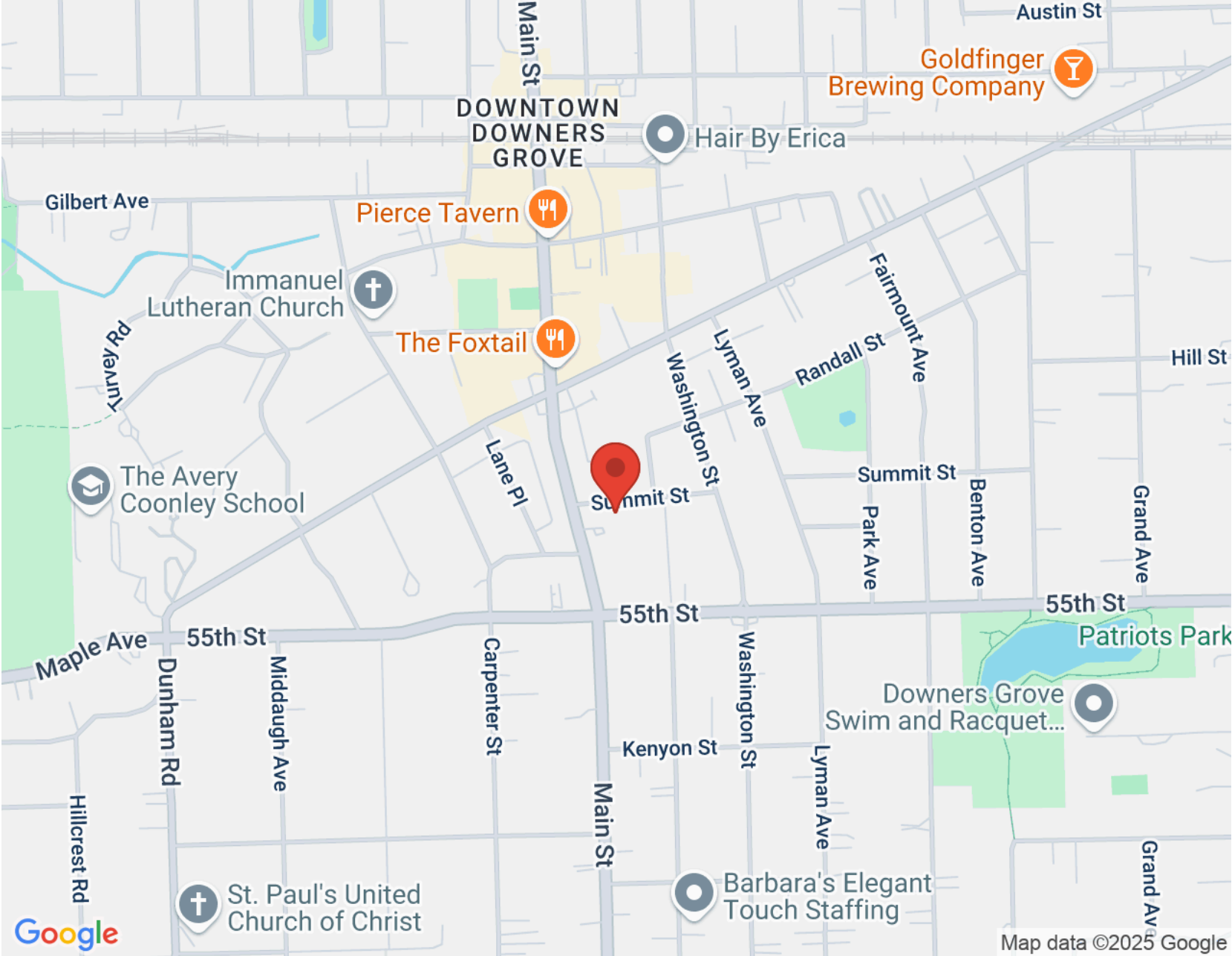
The village has racked up more than its share of accolades, with *Forbes* naming it one of America's friendliest towns and *CNN* ranking it among the country's best places for a healthy retirement due to its abundance of parks and top-notch hospitals.

A varied housing stock exists in this robust community, ranging from historic homes from the mid-1800s to an assortment of Sears Roebuck Catalog Homes, which were built between 1908 and 1940 from purchased kits. New construction can also be found in the village.

Along with ample boutique shopping and upscale dining, Downers Grove hosts dozens of community events and festivals, attracting visitors and earning the village a place on the Chicago Tribune's "Top 10 List of Downtowns." The community is also home to the Downers Grove Museum, which includes the historic Blodgett House.

Metra's BNSF Railway has three stations in Downers Grove, providing direct transportation to Chicago.





NOTES \_\_\_\_\_

\_\_\_\_\_

\_\_\_\_\_

\_\_\_\_\_

\_\_\_\_\_

\_\_\_\_\_

\_\_\_\_\_

\_\_\_\_\_

\_\_\_\_\_

\_\_\_\_\_

\_\_\_\_\_





## SAMANTHA SCHROEDER

708-712-0727

SAM@SAM-SCHROEDER.COM

WWW.SAM-SCHROEDER.COM

*Samantha*  
SCHROEDER



All specifications, features, designs, price, assessments, taxes and materials are subject to change without notice. Depicted floor plans and architectural renderings are only an artist's impression.

