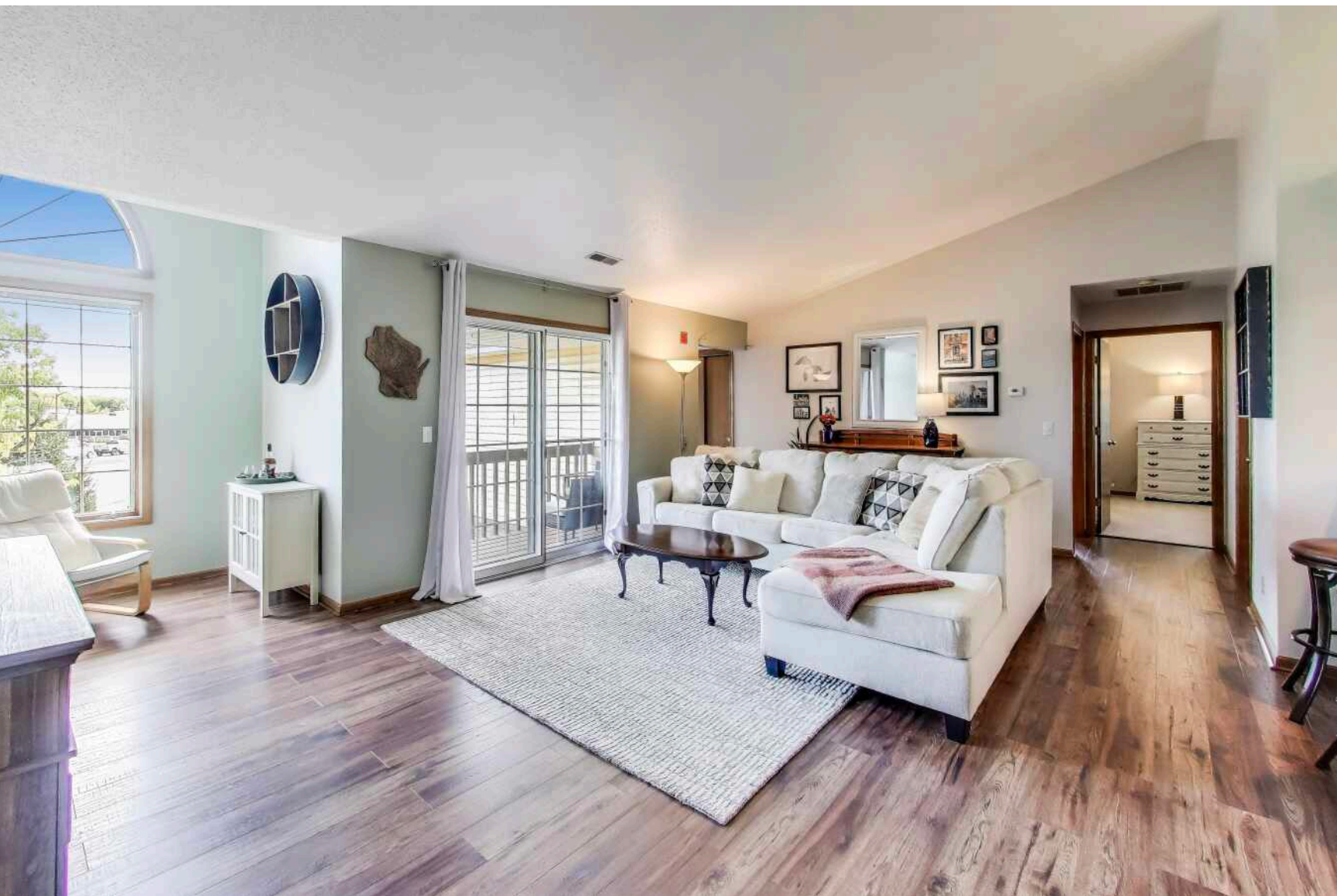


**9600 RAYNE ROAD #1**  
STURTEVANT - WASHINGTON HIGHLANDS





2 BEDROOM

2 BATH

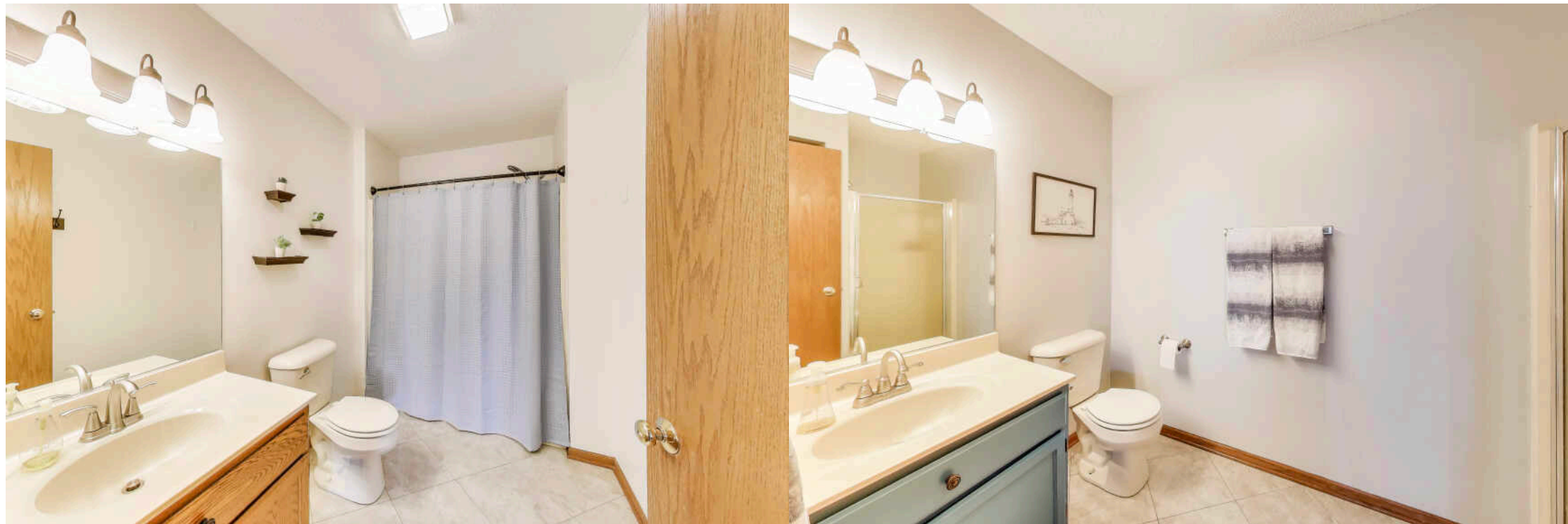
TAXES: \$2,569.81 (2024 TAX YEAR)

ASSESSMENTS: \$215/MONTH

## PICTURE-PERFECT 2-BEDROOM UPPER CONDO IN WASHINGTON HIGHLANDS

Welcome to this bright and modern 2-bedroom, 2-bathroom upper condo in Sturtevant's desirable Washington Highlands. This hard to get end/corner unit boasts a private entrance, new vinyl plank flooring (2020), and a spacious open layout with a snack bar and versatile nook perfect for a home office or reading area. The master bedroom features an ensuite bathroom, and the unit includes an in-unit washer/dryer, a large 2-car garage, and a private balcony with southeasterly views. Enjoy a central gazebo in the community's green space and a prime location just 5 minutes from I-94 via Hwy 20, close proximity to the Sturtevant Amtrak Station (serving Chicago, Milwaukee, General Mitchell International Airport, and St. Paul), and near scenic walking paths around St. Bonaventure Pond. Perfect for low-maintenance, comfortable living.

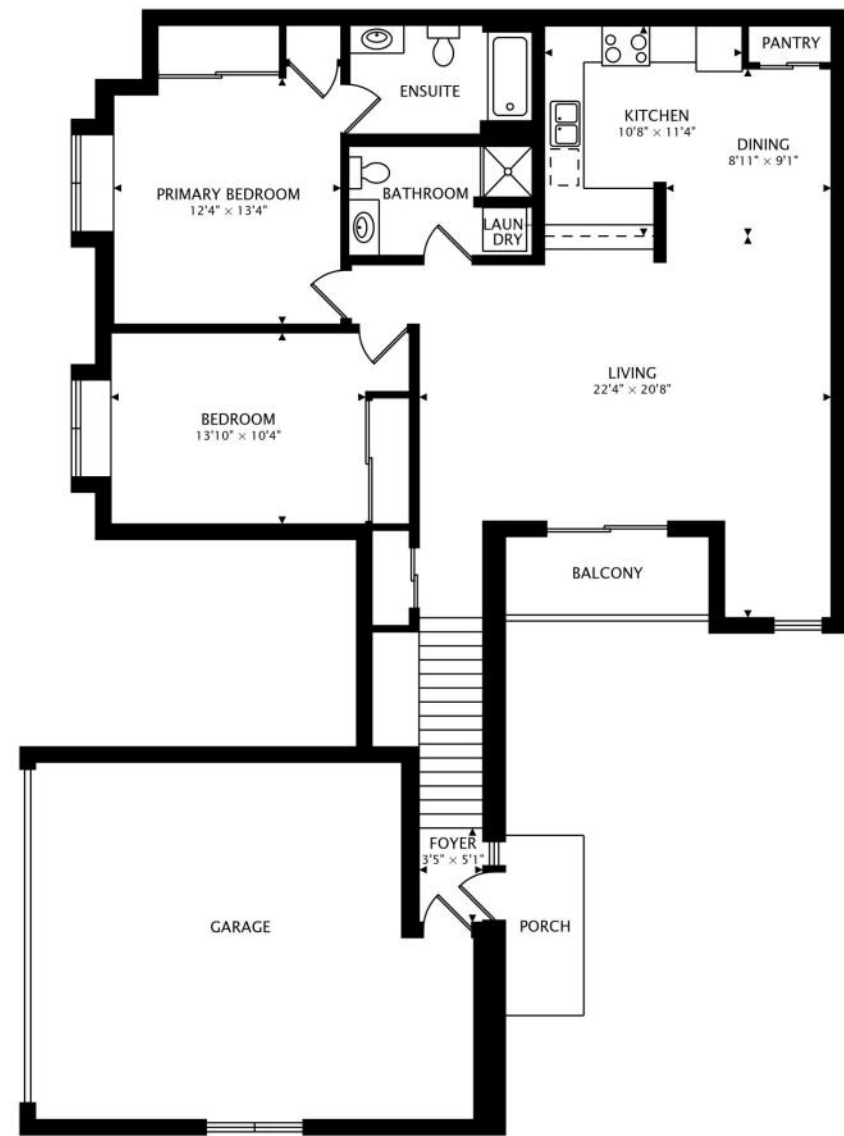
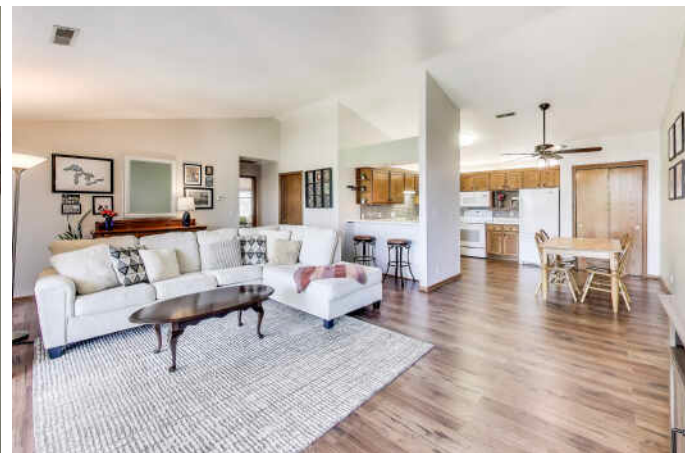












1310 sq ft









## DANIEL KROLL

262-308-4508 (CELL - TEXT ME!)

DANIELK@ATPROPERTIES.COM



All specifications, features, designs, price, assessments, taxes and materials are subject to change without notice. Depicted floor plans and architectural renderings are only an artist's impression.

