

**9603 S ALBANY AVENUE**  
EVERGREEN PARK





**ROOM DIMENSIONS**

LIVING ROOM : 16' × 13'

FAMILY ROOM : 11' × 11'

KITCHEN : 13' × 12'

PRIMARY BEDROOM : 12' × 11'

SECOND BEDROOM : 11' × 9'

THIRD BEDROOM : 13' × 10'

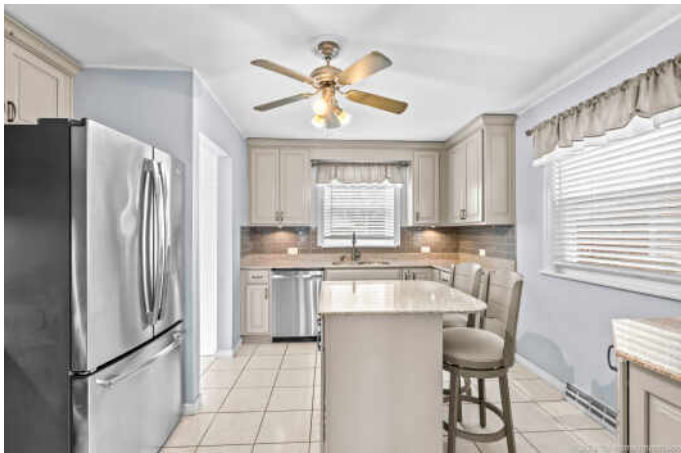
**3 BEDROOM**

**1 BATH**

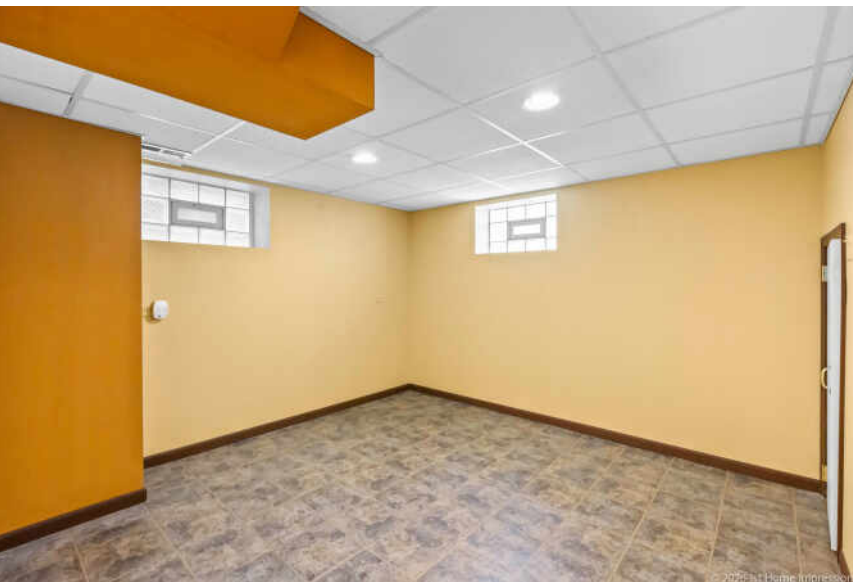
**TAXES: \$5,415**

Charming and Move-In Ready, this Impeccably Maintained 3-bedroom home offers comfort, style, and thoughtful updates throughout. The bright living room features Hardwood Floors, Abundant Natural Light, and a Welcoming Layout that flows seamlessly into the rest of the home. The Remodeled Kitchen is a standout, showcasing updated 42" cabinetry, Granite Countertops, Glass Subway Tile Backsplash, GE Stainless Steel Appliances, and a Functional Island-perfect for everyday living and casual entertaining. The Full Bathroom is located on the main level and has been Tastefully Updated with Clean, Modern Finishes. The Full, Finished Basement provides a Third Bedroom (optional office, home gym, music studio or more!), Recreation Room and Bar Area. Beautiful, Fenced Backyard has a Concrete Patio, Covered Sitting Area and Detached 2.5 Car Garage with a Party Door! Loads of Storage can be found within the garage and basement closets. This Lovely Home exudes real Pride of Ownership inside and out - you will not be disappointed!











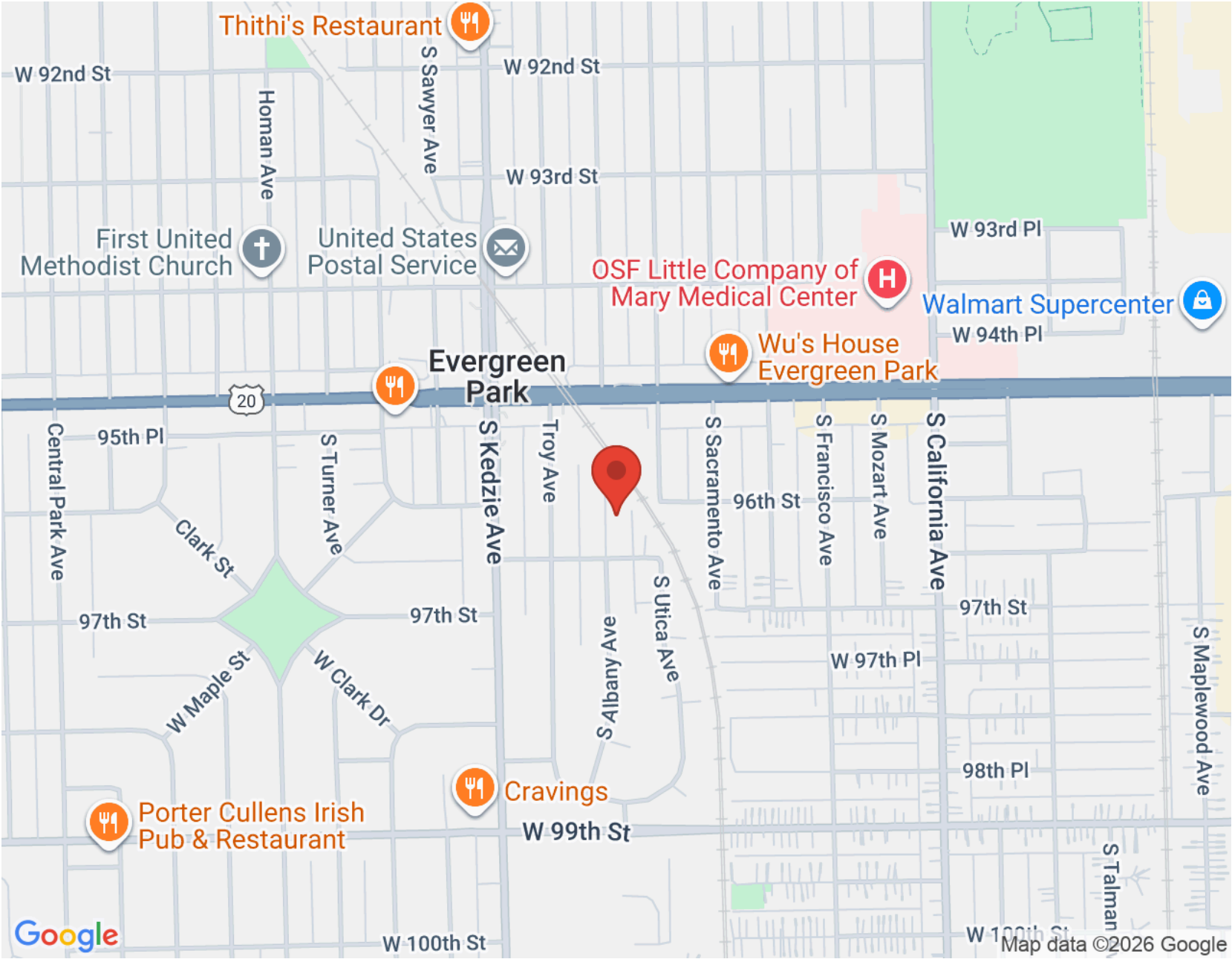


## SMALL-TOWN CHARM AND BIG-CITY AMENITIES HIGHLIGHT THE **VILLAGE OF EVERGREEN PARK** – A VIBRANT COMMUNITY BORDERED BY THE CITY OF CHICAGO.

Home to numerous parks, the suburb boasts abundant green space and recreational opportunities. Several community events are held at Klein Park (also known as Circle Park), where residents enjoy a summer concert series and take advantage of athletic fields and sand volleyball courts. But the fun and games don't stop there. Three dog parks can be found at 50-Acre Park, along with an agricultural park, disc golf, a driving range, and a sledding hill.

Evergreen Park real estate mostly consists of single-family homes, many of which are ranch-style or bungalows. The village is a 17-mile drive from downtown Chicago and just over seven miles from Midway International Airport.





NOTES \_\_\_\_\_

\_\_\_\_\_

\_\_\_\_\_

\_\_\_\_\_

\_\_\_\_\_

\_\_\_\_\_

\_\_\_\_\_

\_\_\_\_\_

\_\_\_\_\_

\_\_\_\_\_

\_\_\_\_\_



## MOLLY MANN

708.774.4672

708.971.0060

MOLLYMANN@ATPROPERTIES.COM

MOLLYMANNHOMES.COM

molly  mann



CHRISTIE'S  
INTERNATIONAL REAL ESTATE