



14730 W IMPERIAL DRIVE
LIBERTYVILLE



14730 W IMPERIAL DRIVE
LIBERTYVILLE

LUXURY PORTFOLIO
INTERNATIONAL

14730IMPERIALDR.INFO

@properties



JOANNA KOPERSKI BROKER ASSOCIATE
847.668.0096 mobile
jkoperski@atproperties.com
JoannaKoperskiProperties.com

JOANNA KOPERSKI
GROUP
EXPERIENCE. REAL ESTATE. SUCCESS.

14730 W IMPERIAL DRIVE
LIBERTYVILLE



LUXURY PORTFOLIO
INTERNATIONAL®

14730IMPERIALDR.INFO

@properties®



FOYER

14730 W IMPERIAL DRIVE

ROOM DIMENSIONS

Foyer.....	20' x 11'
Living Room.....	17' x 14'
Dining Room.....	20' x 14'
Kitchen.....	19' x 18'
Breakfast Room.....	18' x 12'
Master Bedroom.....	23' x 13'
Second Bedroom	15' x 15'
Third Bedroom.....	19' x 11'
Fourth Bedroom.....	15' x 11'
Fifth Bedroom	30' x 15'
Lower Level.....	64' x 38'

FEATURES

This lovely country estate graces 4.69 wooded acres in secluded Imperial Woods. Completely remodeled in 1997, the residence reflects current luxury tastes & standards, the new elegant brick and stone façade presaging its renaissance. A dramatic 2-story marble entrance hall centers the residence, flushed w/sunlight from the skylight, a graceful curving staircase leading to welcoming loft areas accented with bookcases. The generous living and dining rooms are found to the west and east of the hall, the expansive family room directly north, a fireplace with a wood-burning stove insert its focal point. The gourmet kitchen is complete with an over-sized granite-topped island, Viking, Dacor and Sub-zero appliances and a see-thru stone fireplace opening to the spacious breakfast room. Glass windows and doors open these rooms to

the expansive deck with breathtaking views of the woods beyond. The mud/laundry room with sauna leads to a greenhouse and 3-car garage, completing the east wing on this floor. The west wing of the 1st floor offers the master bedroom suite with its sumptuous master bath, as well as the 2nd bedroom suite. The 2nd floor presents a huge game room (which can be used as a possible 5th bedroom), a full bath, the aforementioned loft areas as well as two additional bedrooms. Extra attic space invites possible build-outs on this floor. The full basement provides a great workshop and crafting area. This beautiful estate offers the best of country living close to town, with horse stables, nature trails, forest preserves and open lands, as well as an abundance of shopping, restaurants, entertainment opportunities and transportation access just moments away.



JOANNA KOPERSKI BROKER ASSOCIATE

847.668.0096 mobile

jkoperski@atproperties.com
JoannaKoperskiProperties.com

JOANNA KOPERSKI
GROUP

EXPERIENCE. REAL ESTATE. SUCCESS.



LIVING ROOM



DINING ROOM



FAMILY ROOM



KITCHEN



KITCHEN, VIEW 2



BREAKFAST ROOM



MASTER BEDROOM



MASTER BATHROOM



SECOND BEDROOM



BATHROOM



BATHROOM



TOP VIEW OF ENTRANCE FOYER



TOP VIEW OF ENTRANCE FOYER VIEW 2



LOFT/LIBRARY



BATHROOM



THIRD BEDROOM



FOURTH BEDROOM



FIFTH BEDROOM



BASEMENT



REAR VIEW



GARDEN VIEW



REAR VIEW



GREEN HOUSE



GARDEN VIEW

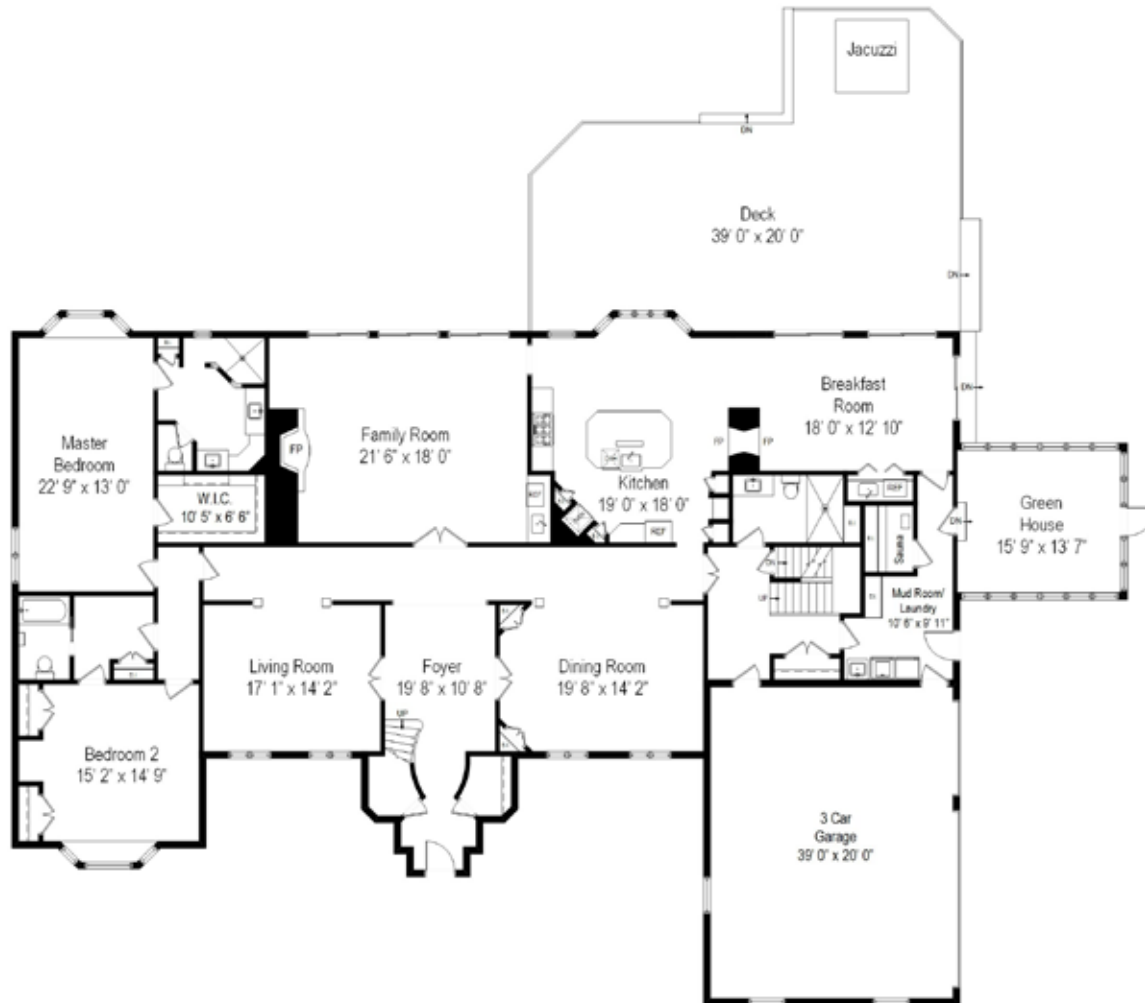


FRONT ELEVATION

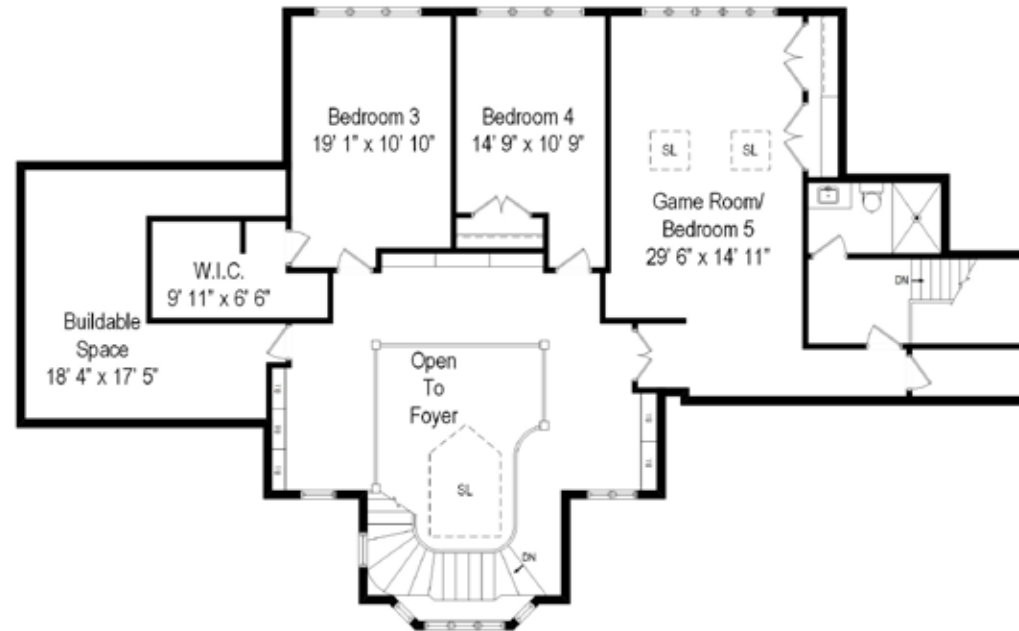


TOP AERIAL VIEW

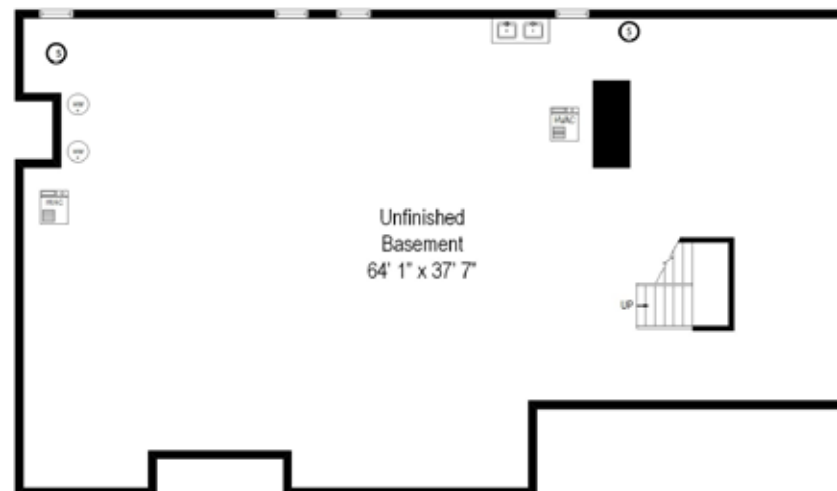
LEVEL 1



LEVEL 2



LEVEL 3





LOCATED 37 MILES NORTHWEST OF DOWNTOWN CHICAGO, **LIBERTYVILLE**
IS AN AFFLUENT COMMUNITY WITH A BUSTLING DOWNTOWN DISTRICT.

A variety of architectural styles can be found in Libertyville, including Victorians and Bungalows, which line the widely-recognized School Street development. The community is particularly lively during the summer, when it hosts a number of annual events including an outdoor concert series and farmers' market.














HISTORY

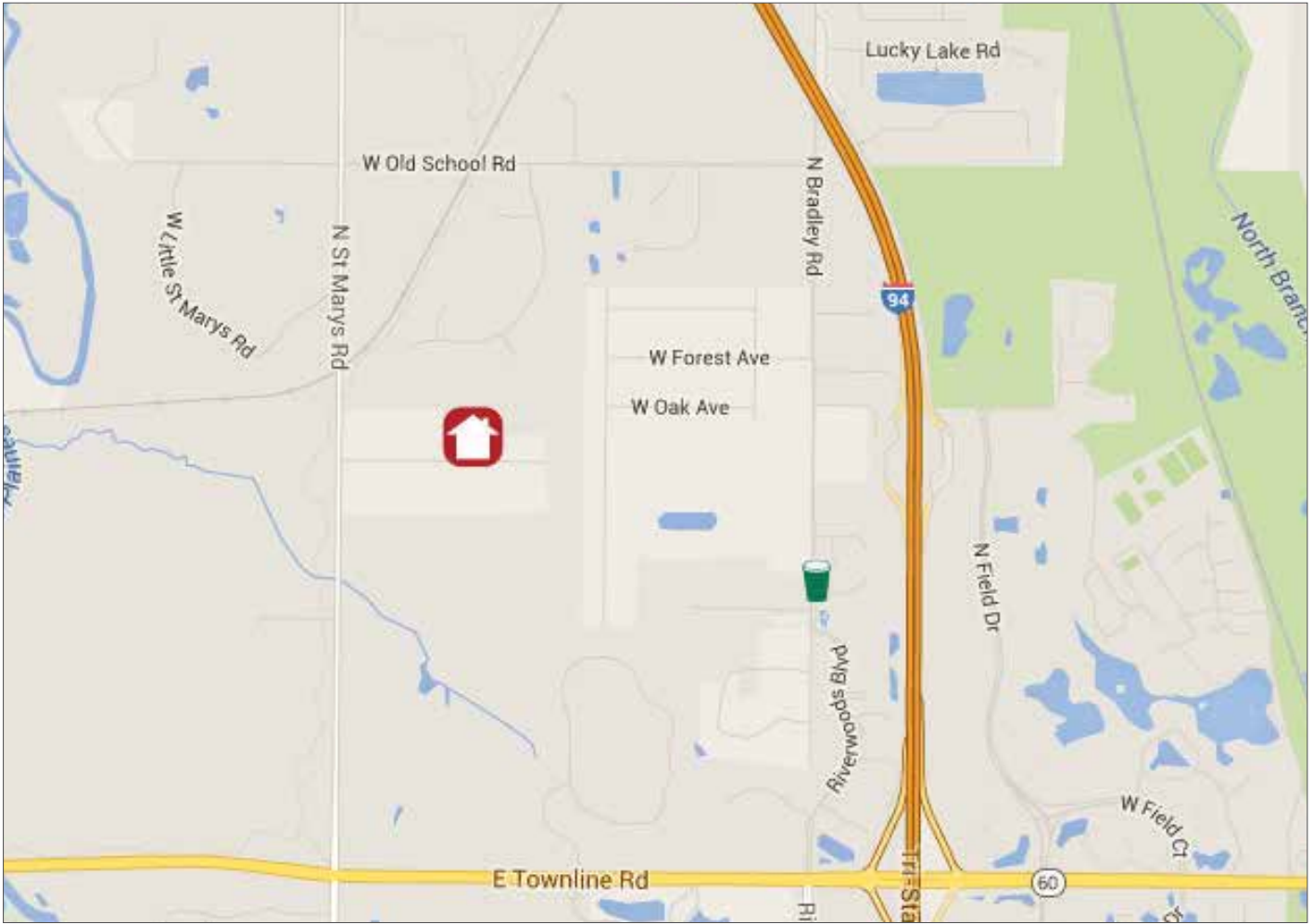
The community's beginnings date back to the early 1830s when English immigrant George Vardin moved to the area and established Vardin's Grove. Initially renamed Independence Grove, the town ultimately was named Libertyville after its first post office. Libertyville experienced rapid growth in the 1880s following the expansion of the Milwaukee Road rail line.

LIFESTYLE

Students are primarily served by Libertyville District 70 and Community High School District 128, which includes Libertyville High School. With three Metra stations, the community offers direct access to and from Chicago's Union Station. The Tri-State Tollway is also located just east of Libertyville, offering residents convenient transportation by car.

Residents and visitors enjoy an assortment of restaurants including 545 North Bar & Grill and Firkin. Shopping is plentiful along Milwaukee Avenue, where one can find a mix of upscale boutiques, antique shops, gift stores and more. With more than eight miles of bike paths and numerous parks, Libertyville also offers an abundance of recreational opportunities.

 Starbucks	 Grocery	 Theater	PUBLIC SCHOOLS:	PRIVATE SCHOOLS:
 Health Club	 Library	 Cta	 High School	 High School
 Dog Park	 Hospital	 Metra	 Elementary	 Elementary



Home-Turf Marketing Systems, L.L.C. and the users of Home-Turf assume no responsibility for any loss or impact resulting from the use of this information. No representations are made regarding the accuracy of the information provided. All data is subject to change and should be verified with local sources.

NEIGHBORHOOD GUIDE



High School District:

Libertyville Community High School District 128

Grade School District:

Rondout School District 72

Nearest Public High School(s):

Vernon Hills High School, 145 Lakeview Parkway, 2.4mi SW

Libertyville High School, 708 West Park Ave, 3.1mi NW

Nearest Private High Schools:

Lake Forest Academy, 1500 W Kennedy Rd, 1.6mi E

Carmel Catholic High School, 1 Carmel Pkwy, 3.7mi W

Woodlands Academy of the Sacred Heart, 760 E Westleigh Rd, 4.9mi E

Nearest Public Elementary School(s):

Rondout Elementary School, 28593 North Bradley Rd, 1.9mi NE

Nearest Public Middle School(s):

Nearest Private Elementary Schools:

East Lake Academy, 13911 W Laurel Dr, 1.4mi NE

Montessori School of Lake Forest, 13700 W Laurel Dr, 1.6mi NE

Nearest Public Library:

Cook Memorial Public Library District, 413 North Milwaukee Avenue, 2.9mi NW

Nearest Hospital:

Advocate Condell Medical Center, 801 South Milwaukee Avenue, 2.4mi NW

Nearest Major Grocery Stores:

Trader Joe's, 1600 S Milwaukee Ave, 1.4mi W

Mariano's, 1720 N. Milwaukee Ave., 1.5mi W

Jewel Osco, 1300 South Milwaukee Avenue, 1.5mi NW

Nearest Movie Theaters:

Rivertree Court Cinema, 701 N Milwaukee Ave, 1.6mi SW

Showplace 8, 555 Lakeview Pkwy, 1.8mi SW

Nearest Major Health Clubs:

Libertyville Tennis & Fitness, 1030 S 4Th Ave, 1.5mi NW

Libertyville Lincolnshire Club, 1030 S 4th Ave, 1.5mi NW

Nearest Starbucks:

695 Bradley Rd, 0.8mi SE

Nearest CTA Station:

Linden, Purple Line, Evanston Express, 17.1mi SE

Nearest Metra

Lake Forest, 3.1mi SE



RESTAURANT GUIDE



Restaurant Name	Address	Phone Number	Distance
Green Basil Thai Restaurant	701 N Milwaukee Ave Ste 284	847-463-1133	1.6mi SW
Sushi Thai	445 E Townline Rd	847-463-5316	2.0mi SW
Jake's Pizza	910 S Milwaukee Ave	847-816-8626	2.1mi NW
Gino's East Pizza	820 S Milwaukee Ave	847-227-0220	2.1mi NW
Panera Bread	832 S. Milwaukee	847-463-5655	2.1mi NW
Fodrak's	327 S Milwaukee Ave	847-463-9290	2.5mi NW
Pizza Italia	218 S Milwaukee Ave	847-463-5637	2.6mi NW
Jet's Pizza	133 N Milwaukee Ave	847-549-3371	2.7mi NW
Bangkok Tokyo	227 Waukegan Rd	847-463-1884	2.7mi NE
Five Guys Libertyville	147 N. Milwaukee Ave	184-754-90514	2.7mi NW
Mickey Finn's Brewery	345 N Milwaukee Ave	847-232-7311	2.9mi NW
The Picnic Basket	501 N Milwaukee Ave	847-463-1656	3.0mi NW
Mambo Italiano	748 S Butterfield Rd	847-378-0151	3.1mi W
Rosati's of Libertyville	1043 N Milwaukee Ave	847-378-0265	3.4mi NW
Sushi Thai	1742 N. Milwaukee Ave	847-463-1105	4.0mi NW
More Asian Cuisine	271 Peterson Rd	847-378-0179	4.4mi NW
Lino's Ristorante & Pizza	265 Peterson Rd	847-680-0600	4.4mi NW
Austin's Saloon & Eatery	481 Peterson Rd	847-227-0469	4.4mi NW
Wa-Pa-Ghetti's Pizza	208 McHenry Rd	224-353-0823	7.8mi S
Himalayan Restaurant	3747 Grand Ave.	847-463-1879	8.2mi N

@properties®



LEADING REAL ESTATE
COMPANIES *of* THE WORLD®

LUXURY
PORTFOLIO
INTERNATIONAL™

