

9787 WEKO DRIVE
BRIDGMAN



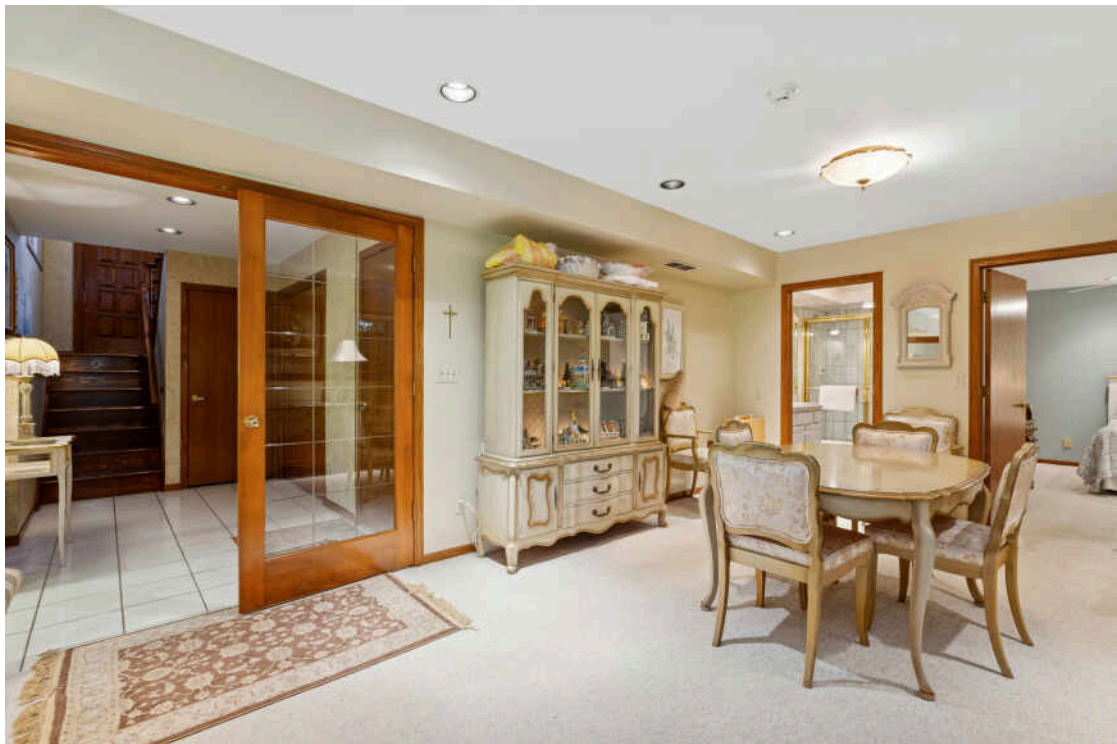


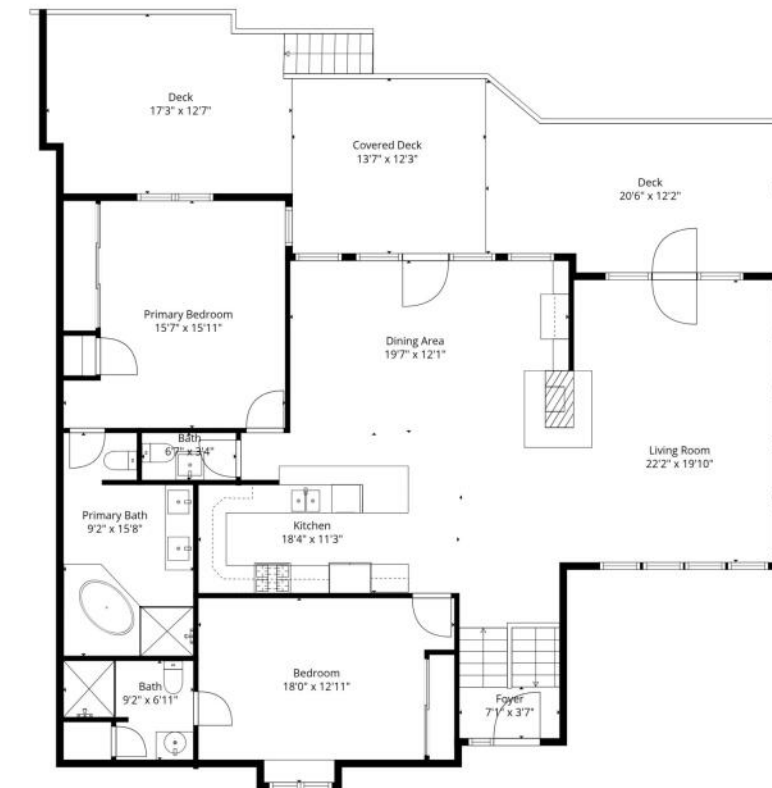
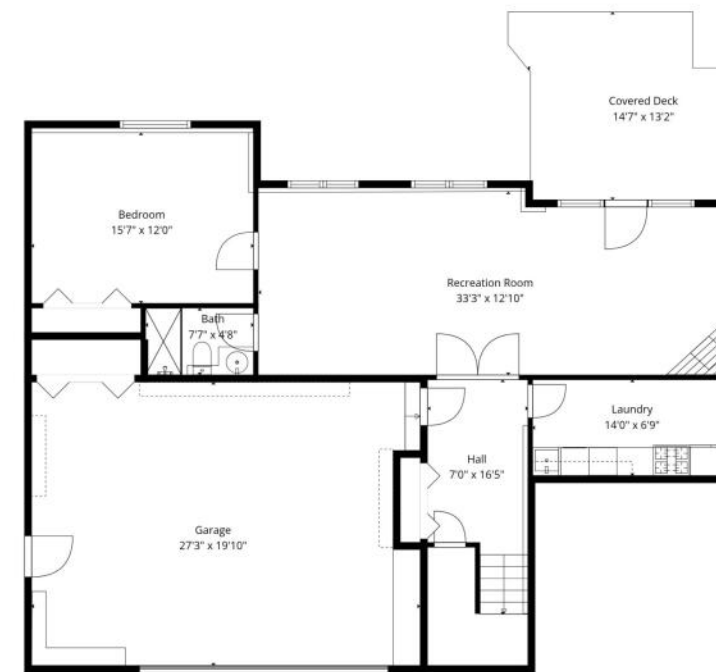
Weko Dunes is a magical place where the sounds of nature envelop you and the beauty of Lake Michigan is a stone's throw away. This is a coveted two level home with two en-suites on the main level. Skylights flood the interior with natural light. There are gleaming hardwood floors, two cozy fireplaces and two outside areas. You'll love the maintenance free living. Assessments include: roof, gutters, skylights, windows, doors, siding, roads and snow, pool and tennis courts. This home has a brand new roof and skylights. Enjoy the community pool, tennis/pickleball and basketball courts. This charming home is just off the shores of Lake Michigan. You'll spend many a day and night on Weko Beach kayaking, paddle boarding, swimming and watching the glorious sunsets to the sound of taps. Welcome to Harbor Country.

3 BEDROOM
3.1 BATH
TAXES: \$5,468
ASSESSMENTS: \$727 / MONTH



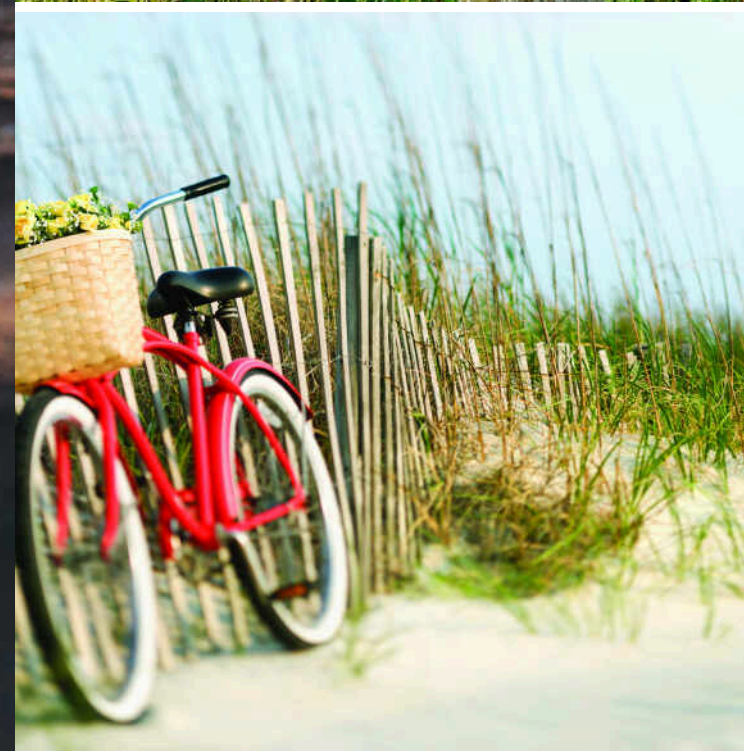






TOTAL: 2519 sq. ft
 FLOOR 1: 943 sq. ft, FLOOR 2: 1576 sq. ft
 EXCLUDED AREAS: GARAGE: 529 sq. ft, COVERED DECK: 350 sq. ft, DECK: 435 sq. ft,
 WALLS: 216 sq. ft

Floor Plan Created By Cubicasa App. Measurements Deemed Highly Reliable But Not Guaranteed.



BEACHES AND BERRIES PRACTICALLY PUT **BRIDGMAN** ON THE MAP.

In the mid-1800s, George C. Bridgman started a farm, growing berries, fruit trees, and grapes.

At the time, the market for fruit was entirely local. That changed when Bridgman granted a railroad right-of-way through his land in exchange for the establishment of a train depot. The nursery business took off when a local grower placed an ad in an East Coast farm journal and started taking orders for strawberry and cane plants. The mail-order nursery business became a million-dollar industry in the community, and wholesale nurseries continue to thrive in the area today.

The area's Weko Beach became a destination in the 1920s with a waterfront pavilion featuring dinner, dancing, and music. The city later purchased and renovated the pavilion, now known as the Beach House.

Weko Beach continues to be a popular attraction with 960 feet of shoreline and access to the Warren Dunes State Park. There are nearly three miles of beach between Weko Beach and Warren Dunes State Park for visitors to experience.





APRIL MOON

(708) 935-6183

708-848-0200

APRILMOON@ATPROPERTIES.COM



CHUCK ANDERSON

8478647176

2692810392

CHUCKANDERSON@ATPROPERTIES.COM

THE
**ANDERSON
AND MOON** GROUP
SELLING ILLINOIS AND MICHIGAN

@properties

CHRISTIE'S
INTERNATIONAL REAL ESTATE