

978 FORESTVIEW WAY
ANTIOCH



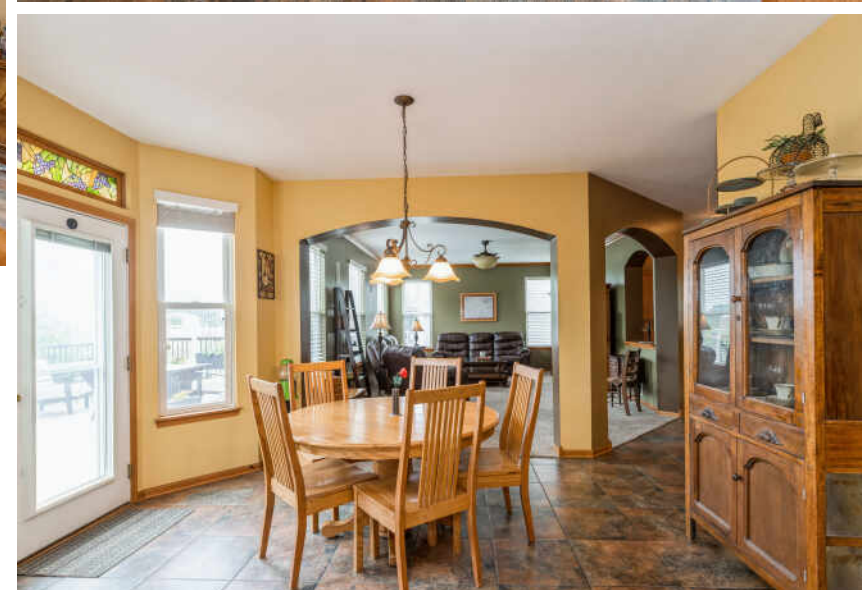
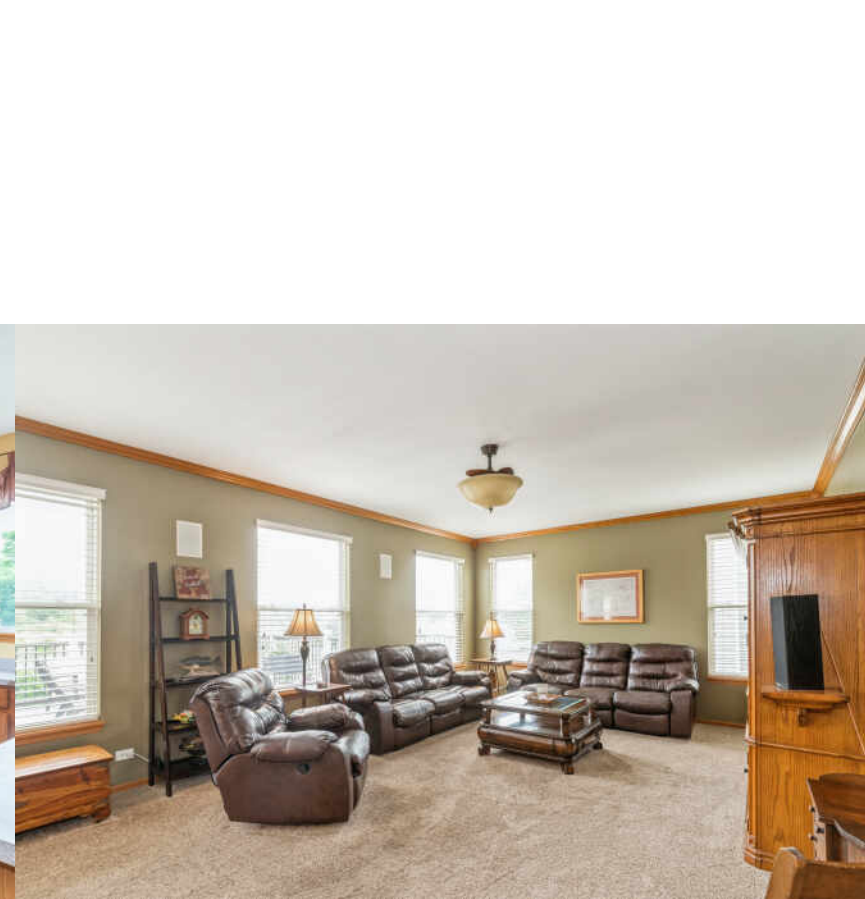
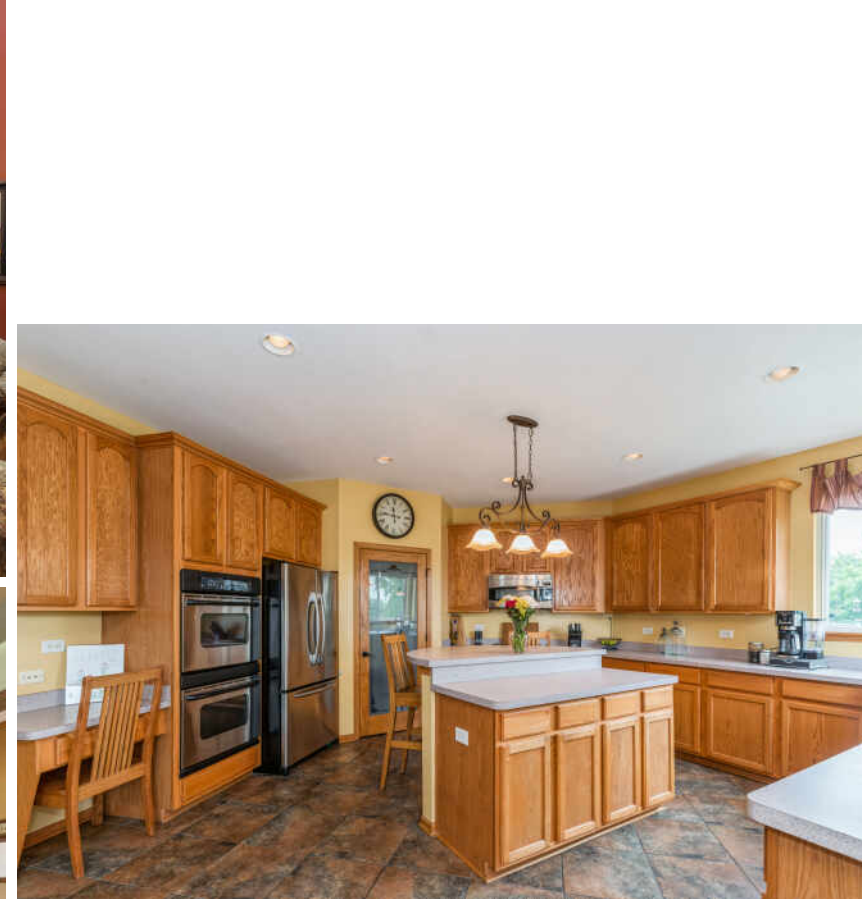


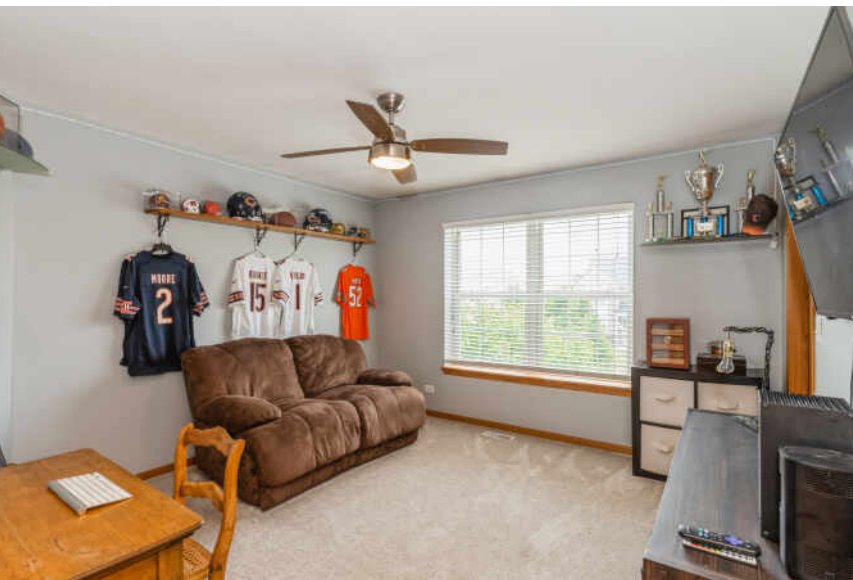
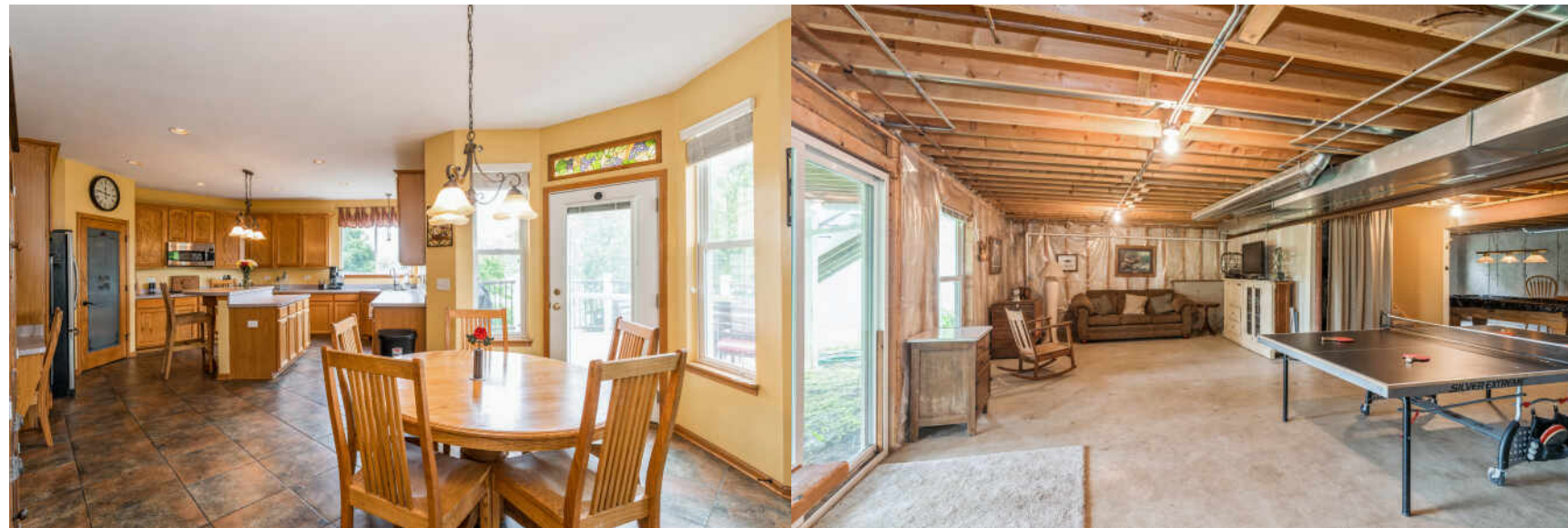
ROOM DIMENSIONS

LIVING ROOM : 17' × 14'
DINING ROOM : 11.5' × 13.4'
FAMILY ROOM : 21.6' × 15.1'
BREAKFAST NOOK : 9.6' × 13.1'
KITCHEN : 17.5' × 20.5'
BONUS ROOM : 13.5' × 10.8'
PRIMARY BEDROOM : 20' × 20'
SECOND BEDROOM : 16' × 15'
THIRD BEDROOM : 12' × 12.1'
FOURTH BEDROOM : 13.11' × 15.6'

4 BEDROOM
3 BATH

Beautiful home in the Clublands subdivision nestled on the edge of a prairie. This spacious home boasts 4 bedroom plus one, two full and one 1/2 bath. The main floor features a large living room with vaulted ceilings and family room with a walk out to an elevated sun deck! Also located on the first floor is a dining room, a separate breakfast nook and a bonus room near the garage. Large primary bedroom with en suite bathroom and walk in closet. An additional three bedrooms expands the upper floor. Laundry room situated on the second floor for convenience. A three car attached garage completes the main level of this fantastic home. Full unfinished basement with a walk out to the private backyard.







BACK IN THE DAY, **ANTIOCH** WAS A POPULAR VACATION DESTINATION FOR CHICAGOANS WHO WANTED TO ESCAPE THE HUSTLE AND BUSTLE OF THE CITY

Among those enjoying a break from city life was gangster Al Capone, who had a summer home here – a nice getaway during the busy Prohibition era.

Antioch is located just south of the Wisconsin border, within the Chicago metropolitan area. Residents and visitors enjoy nearby lakes for fishing and boating as well as the village's parks, golf club, and community pool.

Antioch also has a vibrant downtown business district with eateries, boutiques, and antique shops. The community hosts free weekly concerts during the summer and an annual Taste of Summer event with food tastings.

Home to an active performing arts scene, the village has a community theater featuring live entertainment. The Antioch Fine Arts Foundation promotes area arts with a gallery, exhibits, art classes, and workshops as well as special events.

The village is situated along Metra's North Central Service Line and near a number of major state highways including Route 83 and Route 173.

[illegible]



ERIC RUBIO

773-412-7365

847-692-5522

ERICRUBIO@ATPROPERTIES.COM

ERICRUBIOPROPERTIES.COM



All specifications, features, designs, price, assessments, taxes and materials are subject to change without notice. Depicted floor plans and architectural renderings are only an artist's impression.

