

985 W FIRESTONE DRIVE
HOFFMAN ESTATES

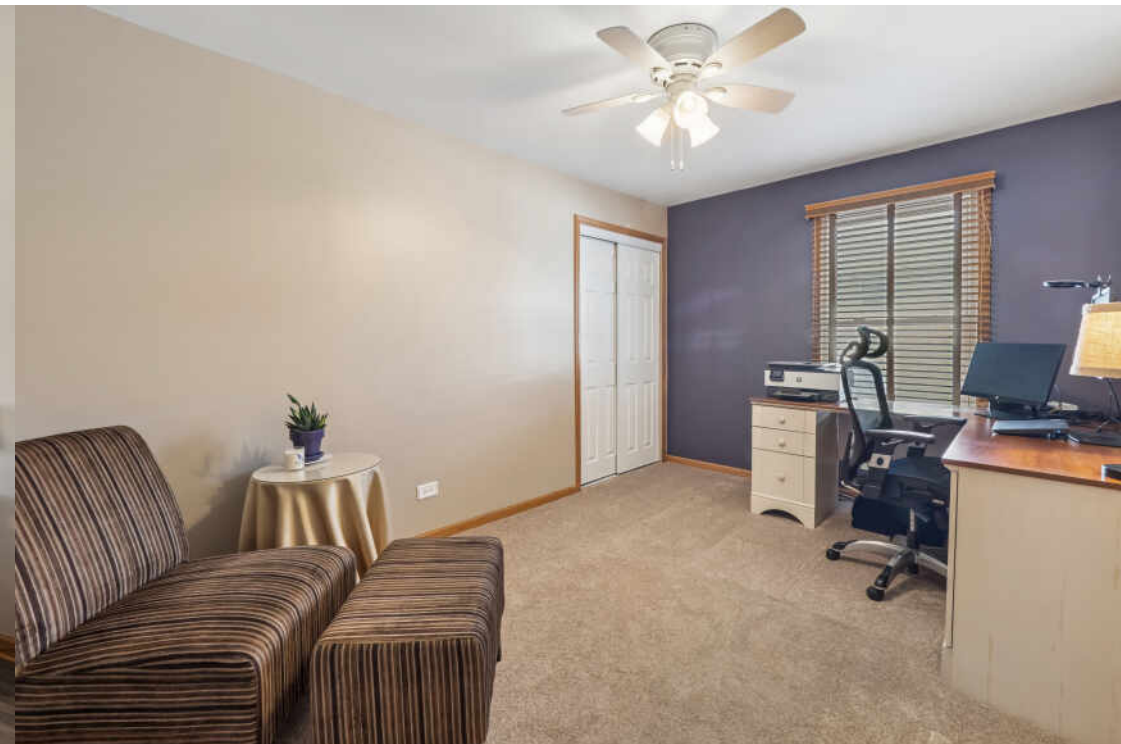
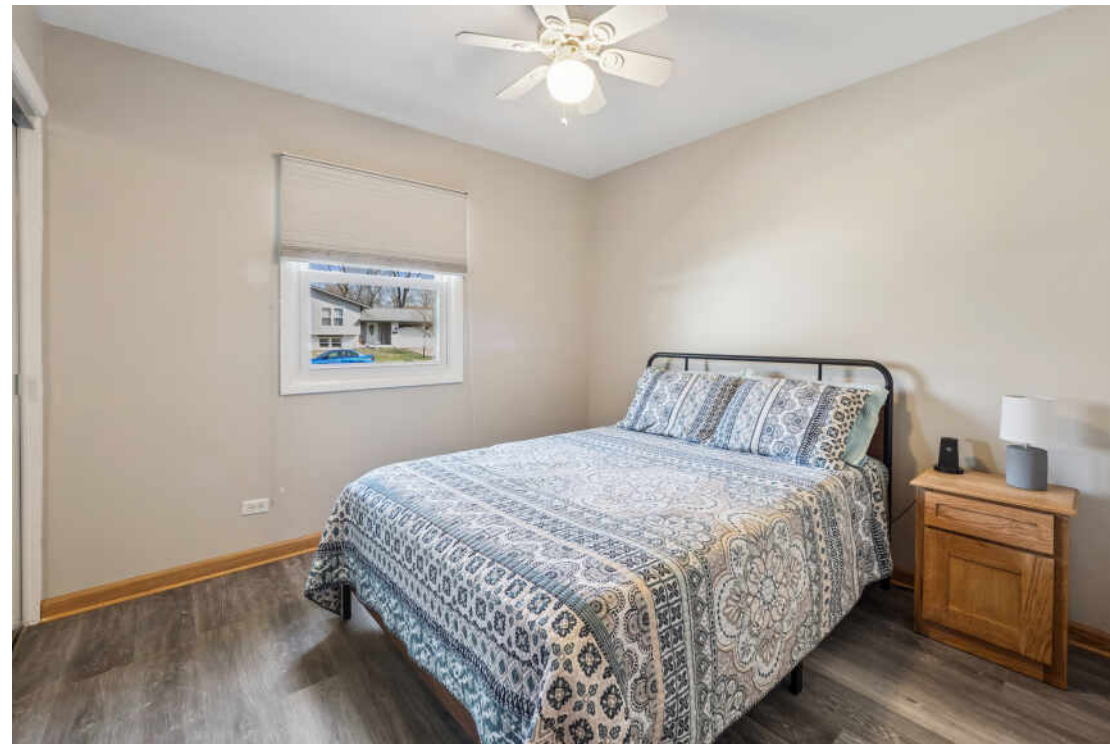


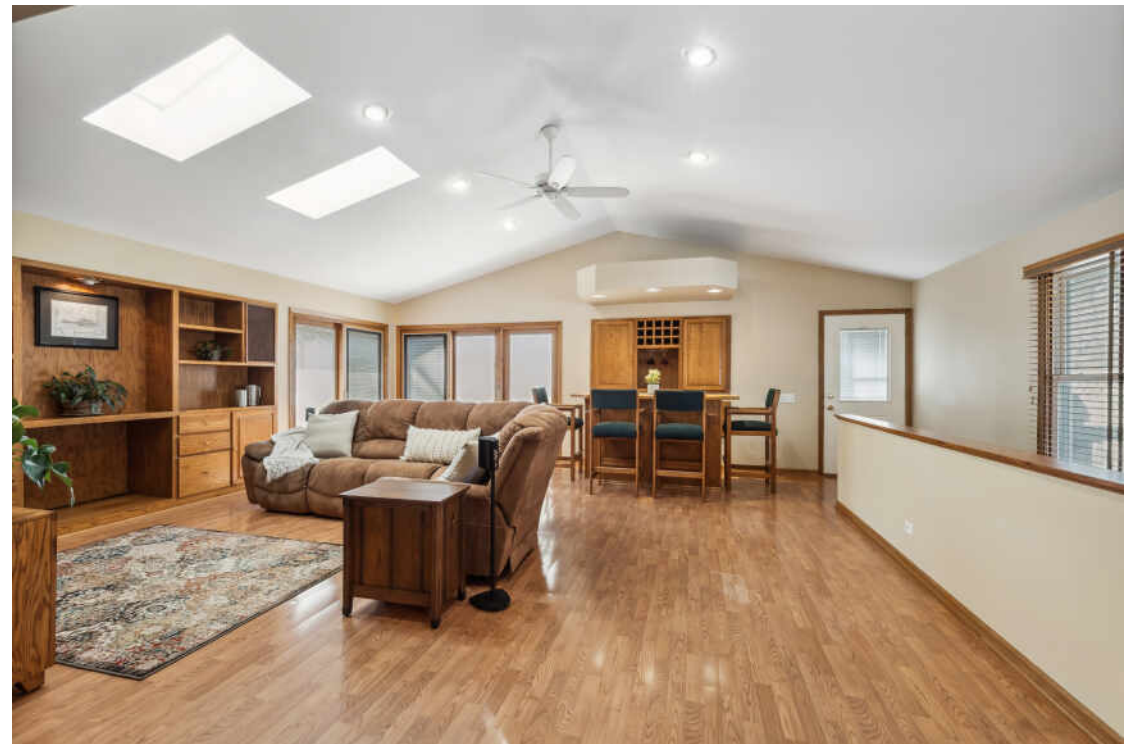


4 BEDROOM
2 BATH
TAXES: 10,633.48

Welcome home to this beautifully maintained 4-bedroom, 2-bath ranch in the highly desirable Winston Knolls neighborhood! From the moment you arrive, you'll be captivated by stunning curb appeal, professional landscaping, and undeniable pride of ownership. Step inside to discover a bright and inviting living room, complete with a charming bay window and cozy window seat, perfect for enjoying picturesque backyard views. The formal dining room provides an elegant space for gatherings, seamlessly flowing into the updated kitchen, making meal prep and serving effortless. The heart of the home is the expansive family room, boasting a vaulted ceiling with skylights, built-in entertainment center, and a full bar area—ideal for entertaining or unwinding. Two sets of Pella sliding glass doors open to a backyard retreat that is second to none! Outside, you'll find a spacious deck, gazebo with an outdoor ceiling fan, above-ground pool, designated dog run, gas line for grilling, sheds for storage, and plenty of yard space—perfect for outdoor entertaining or backyard fun! Bonus Space! Unlike many homes in the neighborhood, this property includes a finished partial basement with crawl space, providing extra living space and ample storage. Located in Palatine's award-winning School District 15, this home is served by Frank C. Whiteley Elementary School, Thomas Jefferson Middle School, and William Fremd High School. The neighborhood amenities are plentiful; enjoy nearby parks, playgrounds, tennis courts, Bo's Run dog park, Willow Recreation Center, Willow Skate Park, and a branch library—all just moments away. With easy access to shopping, forest preserves, Metra stations, and the I-90 tollway, this home offers both convenience and an unbeatable lifestyle. Don't pass up the opportunity to own this beautifully updated home in a prime location!











DONNA BODE

(630) 667-7182

630-377-1700

DONNABODE@ATPROPERTIES.COM



All specifications, features, designs, price, assessments, taxes and materials are subject to change without notice. Depicted floor plans and architectural renderings are only an artist's impression.

