

9900 SHADY LANE #3NE
ORLAND PARK





ROOM DIMENSIONS

LIVING ROOM : 20' × 13'

DINING ROOM : 11' × 10'

KITCHEN : 15' × 11'

PRIMARY BEDROOM : 21' × 12'

SECOND BEDROOM : 13' × 11'

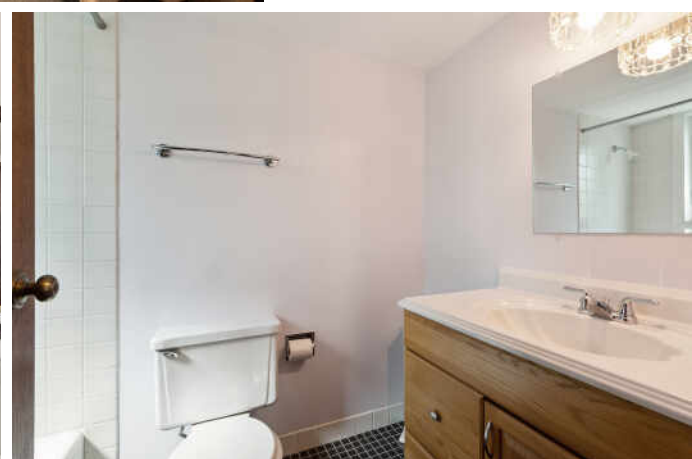
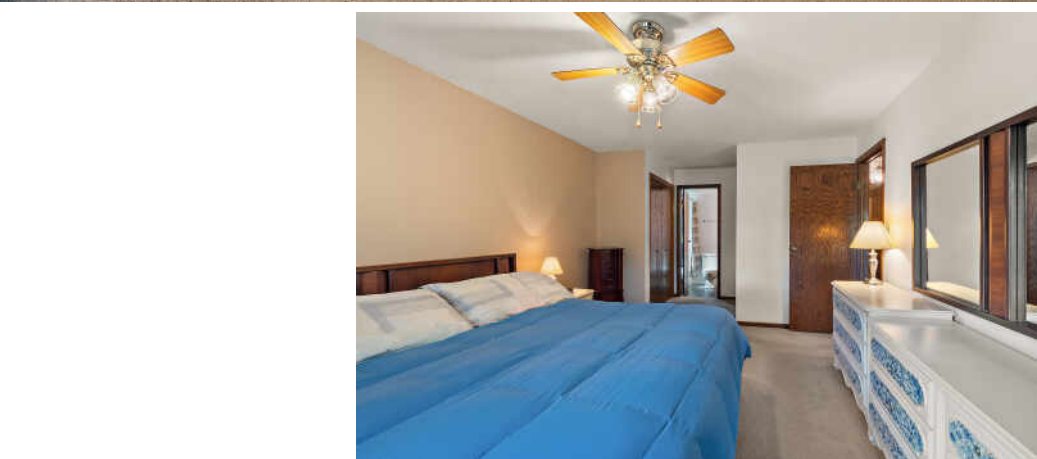
Now available - this spacious and well-cared-for 2 bedroom, 2 bathroom condo offers a wonderful combination of comfort, convenience, and location. Nestled in a quiet cul-de-sac, this charming unit features an eat-in kitchen that includes a coffee bar with its own sink, in-unit laundry, and a spacious living area with sliding glass doors that lead to a private balcony-perfect for relaxing or entertaining. A separate dining room provides the perfect setting for gatherings or cozy meals. The primary bedroom is a true retreat with two closets and a private ensuite bathroom, while a large walk-in closet at the entry provides additional storage space. Enjoy peace of mind with newer windows, furnace and A/C (approx. 3 yrs old), and a detached one-car garage. Plenty of guest parking is available, and you'll love being close to shopping, restaurants, the library, scenic trails, and the Centennial Aquatic Center. Seize the opportunity to make this cozy, conveniently located home yours!



2 BEDROOM

2 BATH









WITH AN ABUNDANCE OF PARKS AND A GROWING SHOPPING AND DINING SCENE, **ORLAND PARK** IS ONE OF THE MOST SOUGHT-AFTER PLACES TO LIVE IN CHICAGO’S SOUTH SUBURBS.

The village has a population of nearly 60,000 and appeals to those looking for a vibrant, tight-knit community in close proximity to the city of Chicago. Parks, trails, and golf courses abound, offering plenty of recreational opportunities for outdoorsy types. In the summer, Lake Sedgewick is the premier place to explore, fish, and boat, with pedal boats and kayaks available for rent. The Centennial Park Aquatic Center is another popular spot where residents can cool off in the pool or play a game of volleyball. Athletic fields and seasonal events are also hosted at Centennial Park.

When it comes to live entertainment, there are several nearby attractions including the Hollywood Casino Amphitheatre – one of Chicagoland’s largest outdoor music venues – located in Tinley Park. Even closer to home is the Orland Park Theatre Troupe, which has been putting on an array of productions for locals to enjoy since 1993.

Approximately a 27-mile drive from downtown Chicago, Orland Park offers convenient access to I-294, I-355, I-57, and I-80. Commuters are just a train ride away from the city thanks to Metra’s SouthWest Service line, which has a stop in Orland Park.



DEBBIE POKRZYWA

(708) 921-1820

DEBBIEPOKO@GMAIL.COM

DEBBIEPOKO.COM