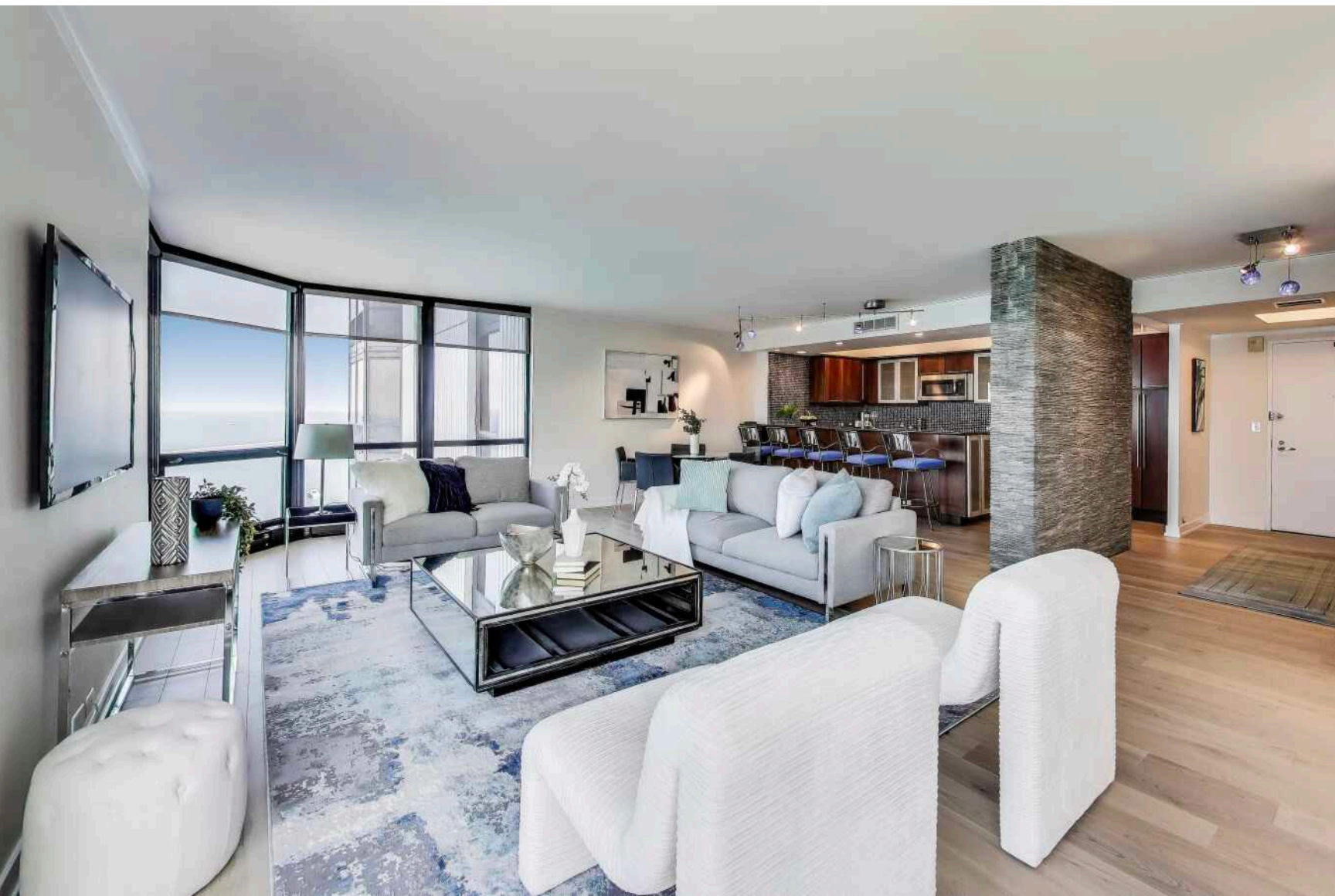


990 N LAKE SHORE DRIVE #26D
STREETERVILLE

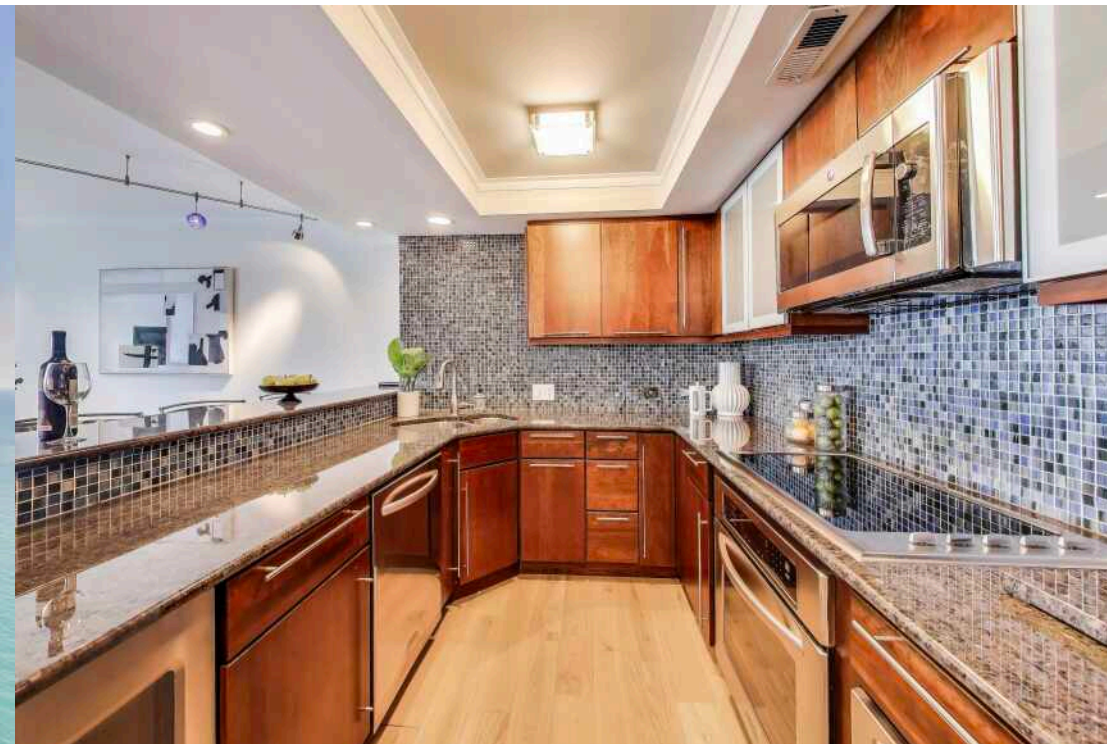


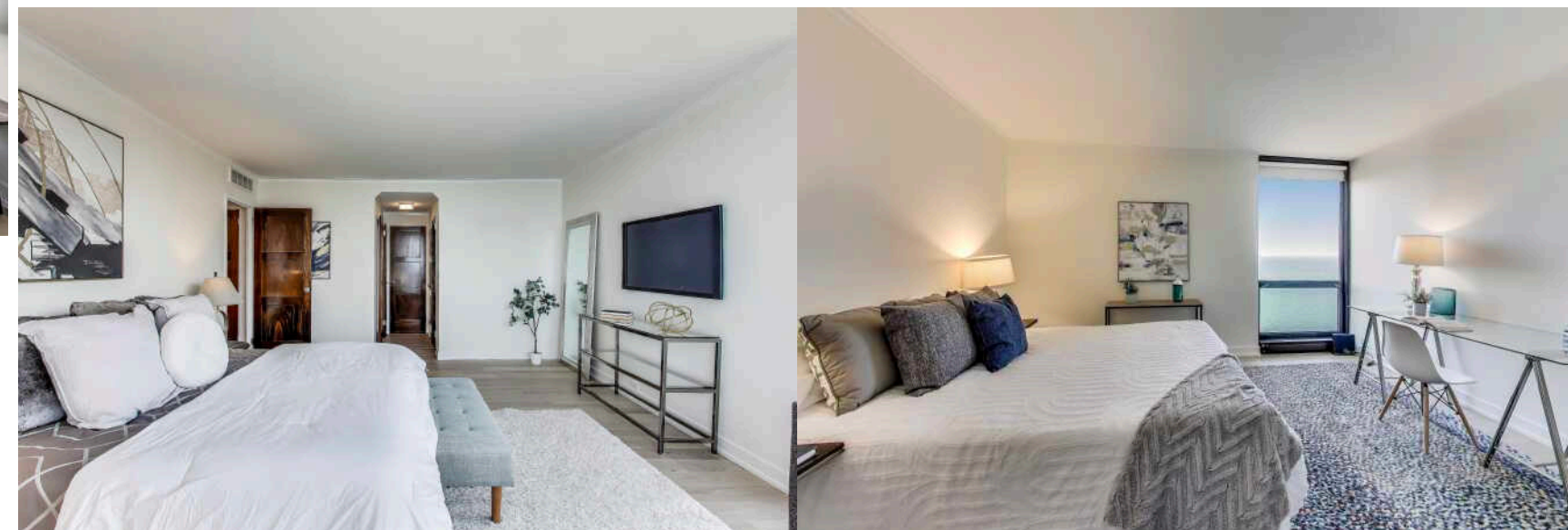
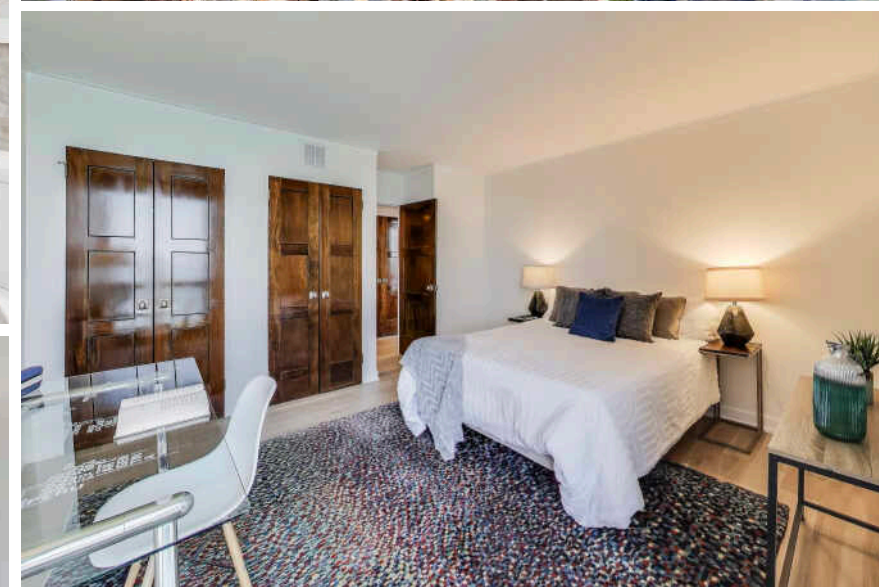
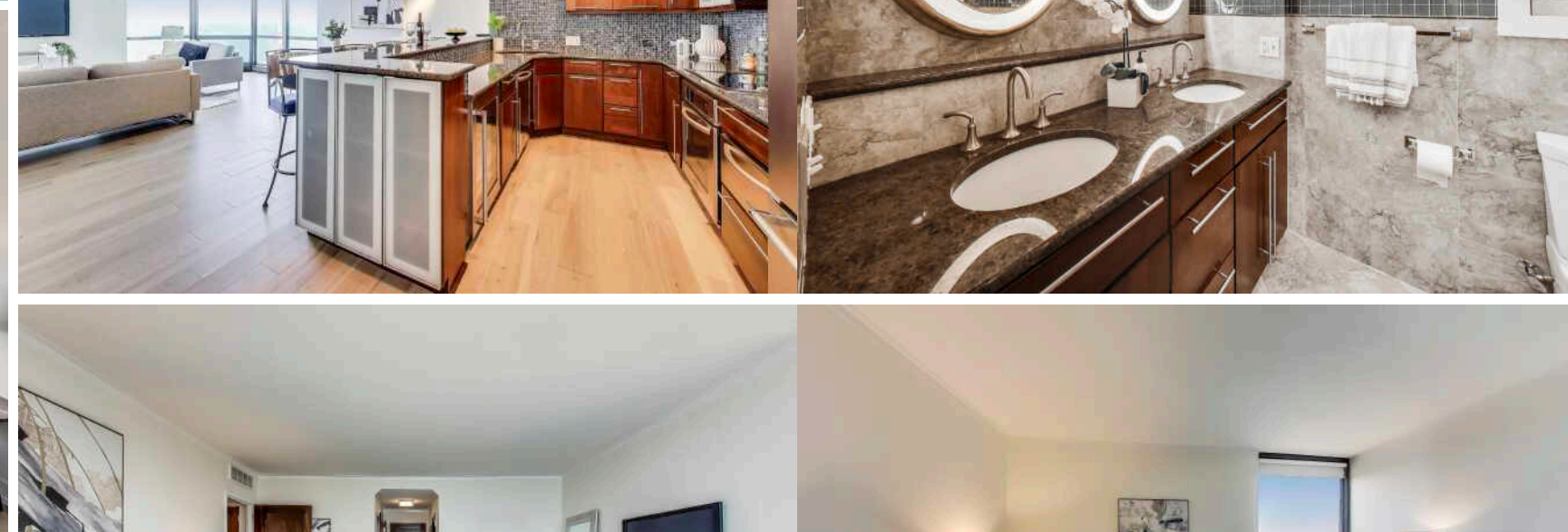
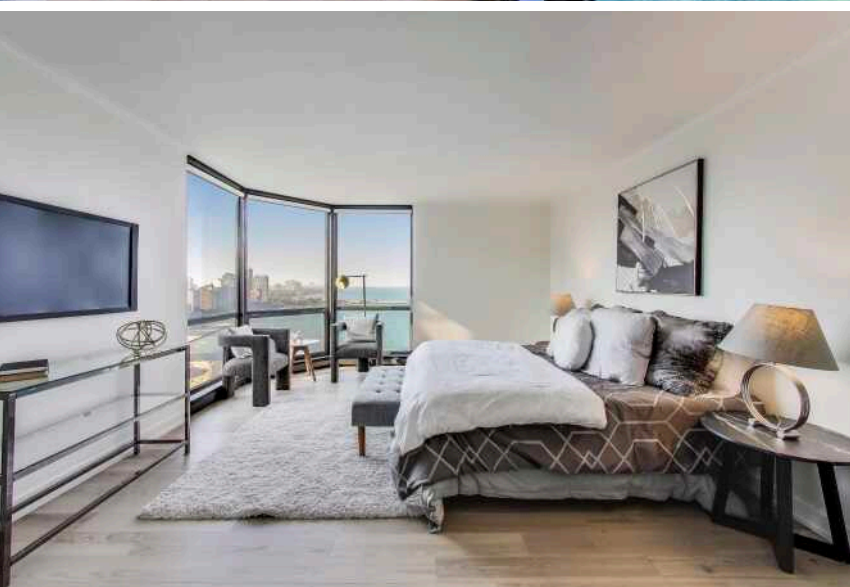
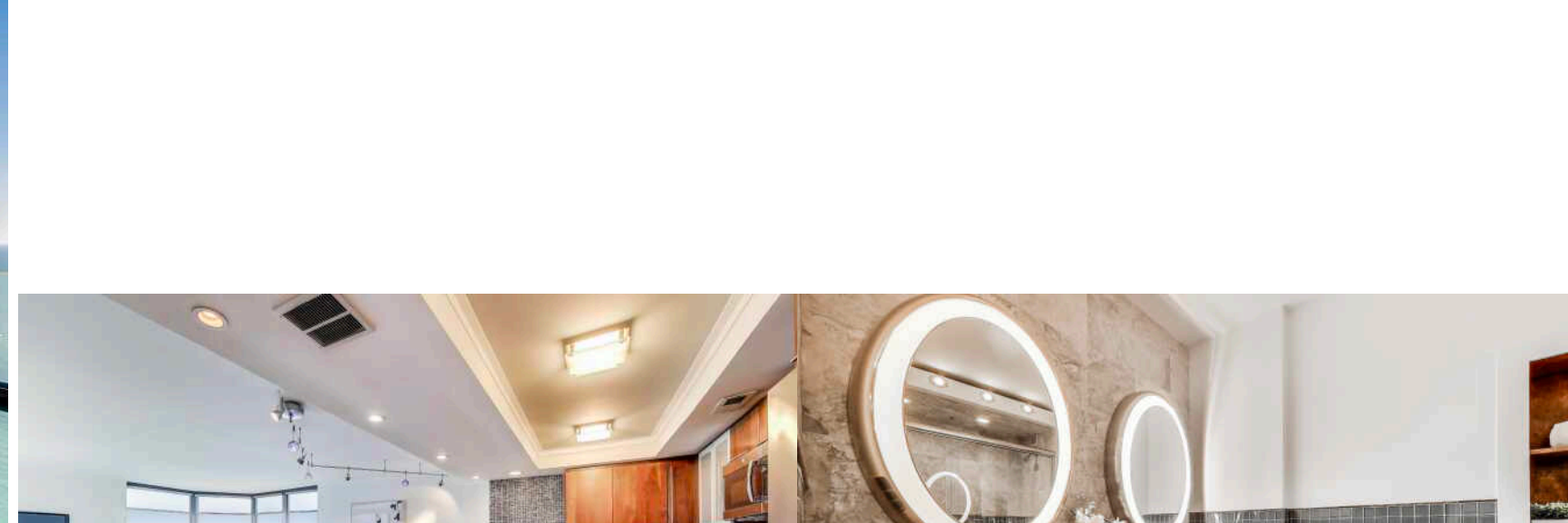


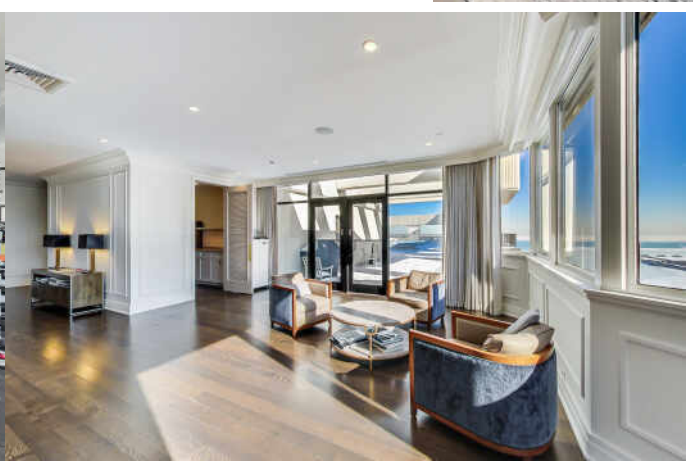
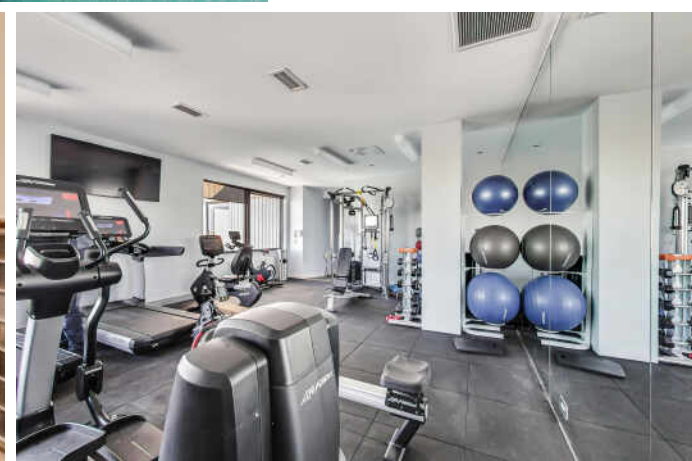
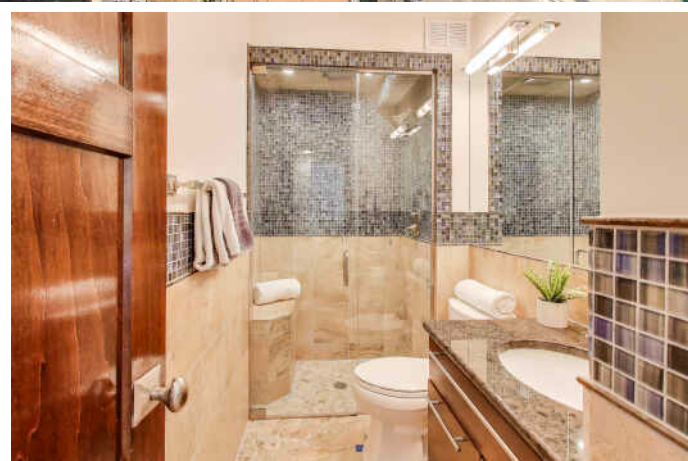
2 BEDROOM
2 BATH
TAXES: \$10,760
ASSESSMENTS: \$1,454 / MONTH

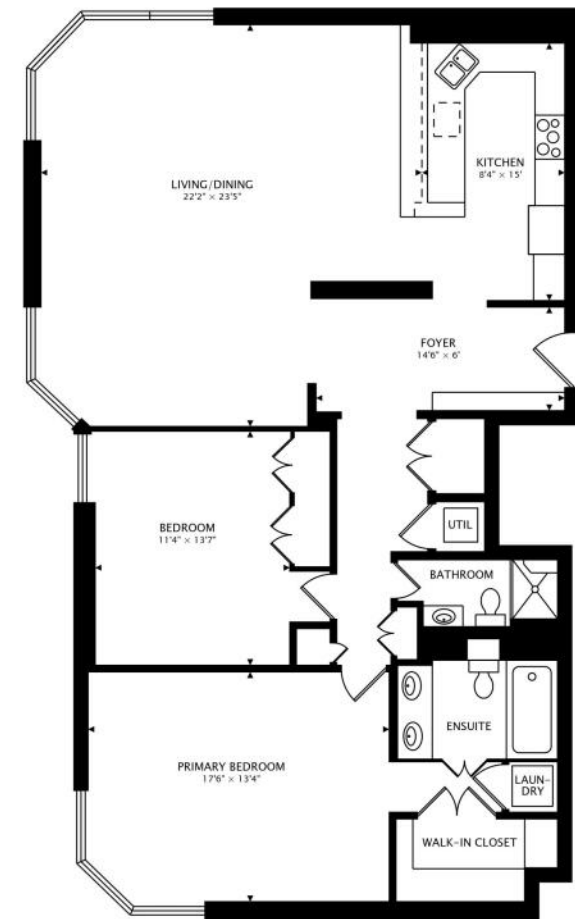
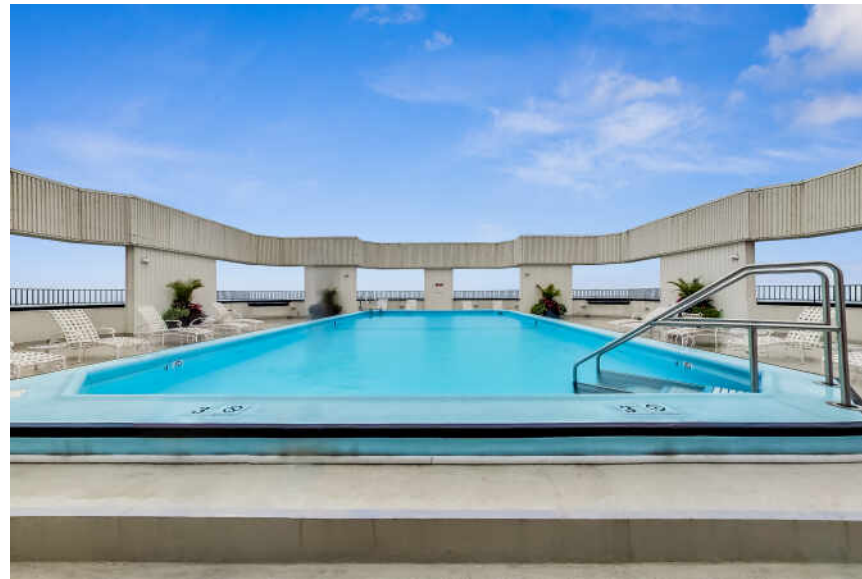
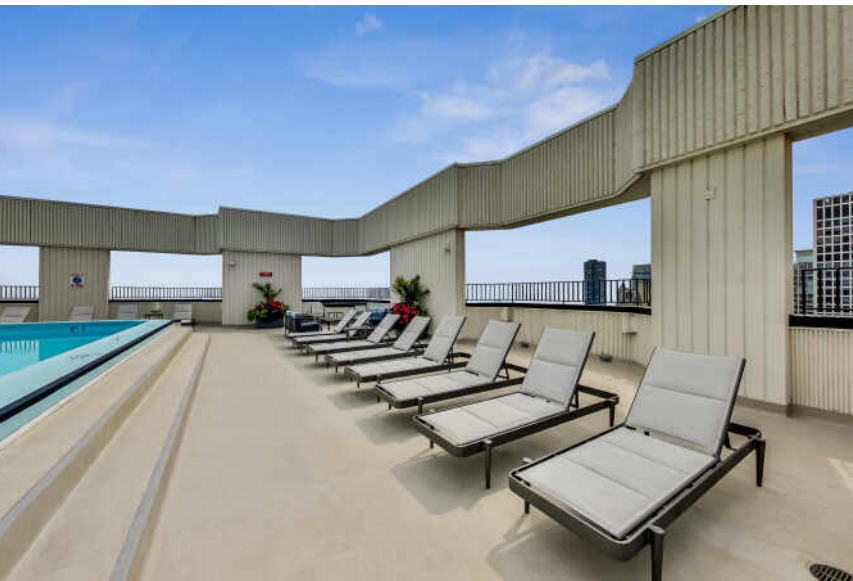
Sophisticated and rarely available east-facing corner residence showcasing stunning, unobstructed Lake Michigan views from every room! Expansive floor-to-ceiling windows flood the space with natural light and breathtaking panoramas. The beautifully updated kitchen features premium appliances, an additional beverage refrigerator, and opens seamlessly to the spacious living and dining areas-perfect for entertaining. Both bathrooms have been tastefully renovated with high-end finishes and a new steam shower. Additional highlights include brand new hardwood floors throughout, new in-unit washer/dryer, and abundant closet space. This full-amenity building offers a rooftop pool, fitness center, party room, and 24-hour door staff. Valet parking available. Steps from Michigan Avenue, Oak Street Beach, and the lakefront. Pet-friendly!



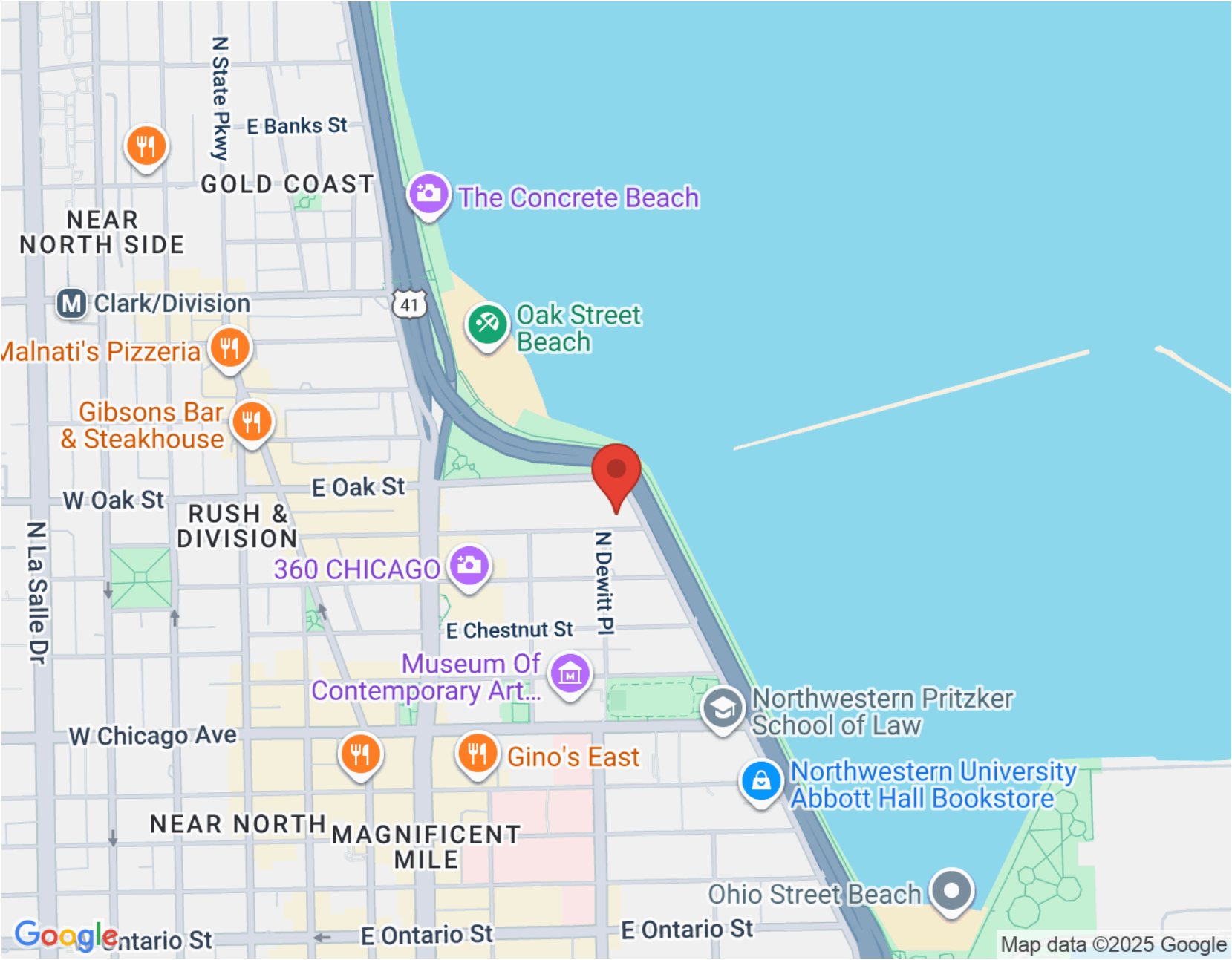








1554 sq ft



NOTES _____



PAUL MANCINI

(630) 267-1899

PMANCINI@ATPROPERTIES.COM



All specifications, features, designs, price, assessments, taxes and materials are subject to change without notice. Depicted floor plans and architectural renderings are only an artist's impression.

