

995 GEORGETOWNE LANE
BARRINGTON





SPACIOUS 4-BEDROOM, 2.5-BATH COLONIAL WITH A BRIGHT, OPEN-CONCEPT LAYOUT

- Desirable Chippendale location with low-maintenance living—HOA covers lawn care
- Private primary suite retreat featuring sitting area, walk-in closet, and updated spa-like bath
- Generously sized secondary bedrooms, including one with dual custom closets and semi-ensuite bath
- Finished basement offers ideal space for entertaining, relaxing, or a home gym
- Expansive full-width deck—perfect for outdoor entertaining and gatherings
- Close to top-rated Barrington 220 schools, Metra, shopping, dining, and parks
- A perfect blend of comfort, convenience, and community living

4 BEDROOM

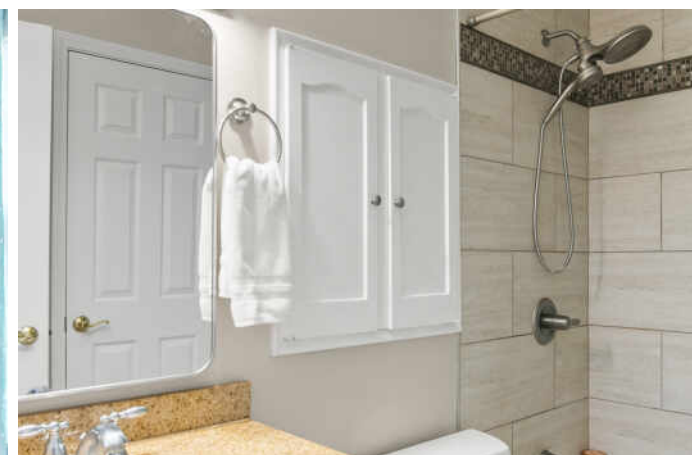
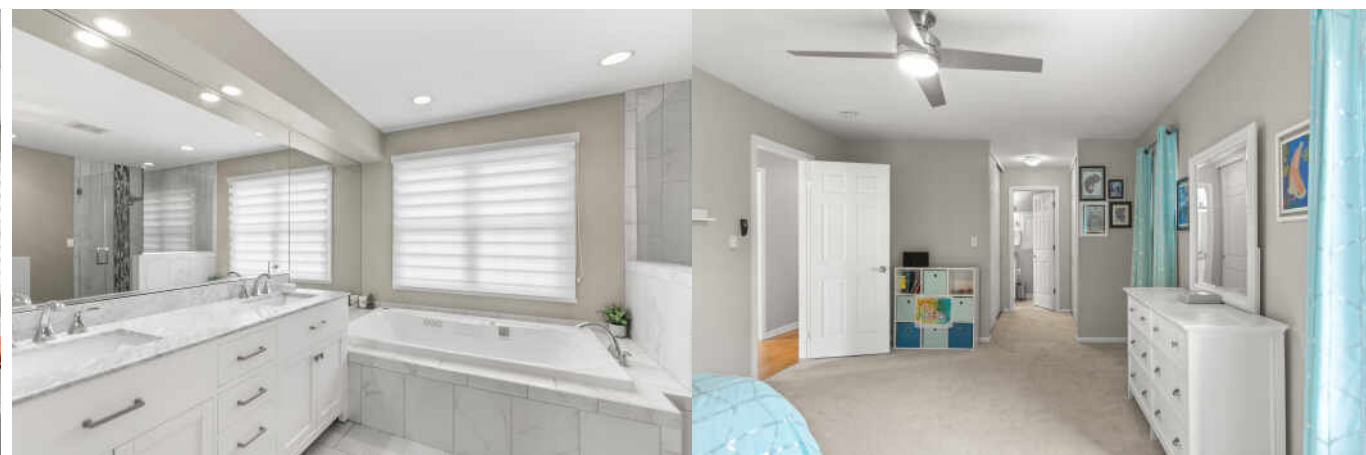
2.1 BATH

TAXES: \$11,716

ASSESSMENTS: \$294 / QUARTER











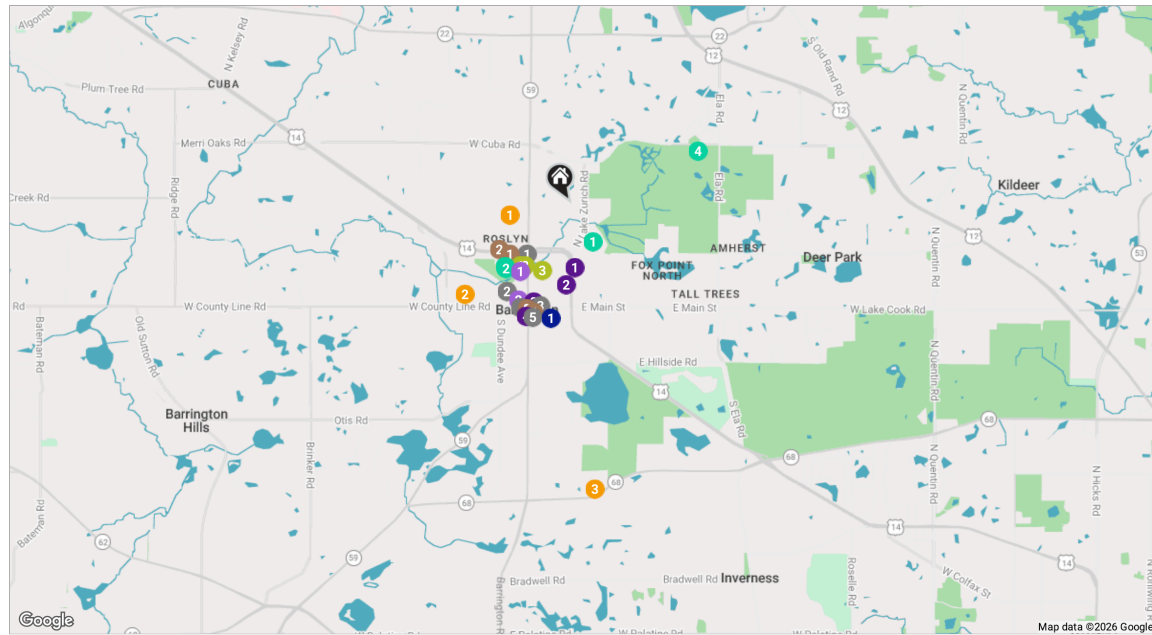
THE VILLAGE OF **BARRINGTON** MAY HAVE THE LARGEST RESIDENTIAL HISTORIC DISTRICT IN THE STATE, BUT IT'S DEFINITELY NOT LIVING IN THE PAST

Many of the beautifully-restored Victorian, Gothic, and Queen Anne homes that line the village's main streets have been repurposed as unique shops and businesses. Meanwhile, homeowners have rehabbed and restored many historic homes back to their former glory with the addition of modern amenities. The village's historic theater opened in 1927 and still operates today.

Barrington also thrives when it comes to recreation. Citizens Park is one of the area's gems, offering wide-open spaces as well as tennis and basketball courts, cross-country ski trails, nature paths, an events pavilion, and a tree house.

The village's downtown center is filled with shoppers, diners, and residents enjoying one of the area's special events, whether it's an art festival, wine walk, or a farmers market. The nearby Barrington Metra station provides a convenient commute to downtown Chicago.

Barrington homes range from Victorians and Colonials to stunning new construction and sprawling mansions with large lots and water views.



RESTAURANTS

- 1 Pizza Factory "A Chicago Pizzeria"
101 W NORTHWEST HWY, 0.6 MI
- 2 Chessie's Restaurant
200 APPLEBEE STREET, 1.0 MI
- 3 Ciao Baby!
232 EAST MAIN STREET, 1.0 MI
- 4 Shakou Restaurants
121 WEST MAIN STREET, 1.0 MI
- 5 Southern Belle's
210 SOUTH COOK STREET, 1.1 MI
- 6 Egg Harbor Cafe
125 WEST MAIN STREET, 1.1 MI

COFFEE

- 1 McDonald's
227 WEST NORTHWEST HIGHWAY, 0.7 MI

- 2 Dunkin'
306 WEST NORTHWEST HIGHWAY, 0.8 MI
- 3 Starbucks Coffee Company
101 WEST MAIN STREET, 1.0 MI
- 4 Conscious Cup Coffee Roasters - Barrington
100 EAST STATION STREET #170, 1.1 MI

GROCERY

- 1 Heinen's Grocery Store
500 NORTH HOUGH STREET, 0.8 MI
- 2 Jewel-Osco
150 WEST MAIN STREET, 1.0 MI

GYM

- 1 Club Pilates
500 NORTH HOUGH STREET SUITE 145, 0.7 MI
- 2 Flexx Personal Training Barrington
550 NORTH HOUGH STREET, 0.7 MI

- 3 Transformation Pilates
234 JAMES STREET SUITE 5, 0.7 MI

SCHOOLS

- 1 Roslyn Road Elementary School
224 WEST ROSLYN ROAD, 0.6 MI
- 2 Barrington High School
616 WEST MAIN STREET, 1.3 MI
- 3 Barrington Middle School, Prairie Campus
40 E DUNDEE RD, 2.6 MI

TRANSIT

- 1 Barrington
METRA - UNION PACIFIC NORTHWEST, 1.1 MI

PARKS

- 1 Citizens Park
511 NORTH LAKE ZURICH ROAD, 0.4 MI

- 2 Barrington Park District
235 LIONS DRIVE, 0.8 MI

- 3 Langendorf Park
235 LIONS DRIVE, 0.8 MI
- 4 Cuba Marsh Forest Preserve
24205 WEST CUBA ROAD, 1.3 MI

SERVICES

- 1 Barrington Area Library
505 NORTH NORTHWEST HIGHWAY, 0.6 MI
- 2 Barrington Police Department
400 NORTH NORTHWEST HIGHWAY, 0.7 MI
- 3 United States Postal Service
106 BARRINGTON COMMONS COURT, 1.0 MI
- 4 Village of Barrington
200 SOUTH HOUGH STREET, 1.1 MI

NOTES



LATASHA CHEDDA

630-217-3000

LATASHACHEDDA@ATPROPERTIES.COM