

**W1350 HONEYSUCKLE RD**  
PELL LAKE / BLOOMFIELD

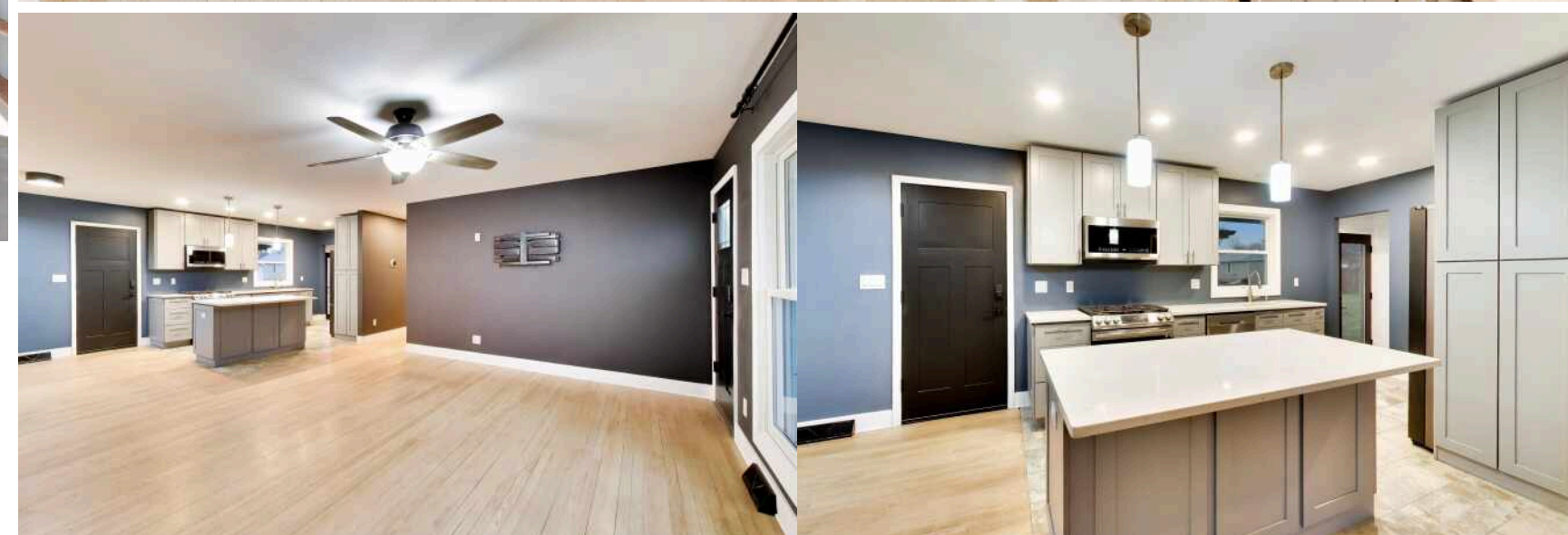
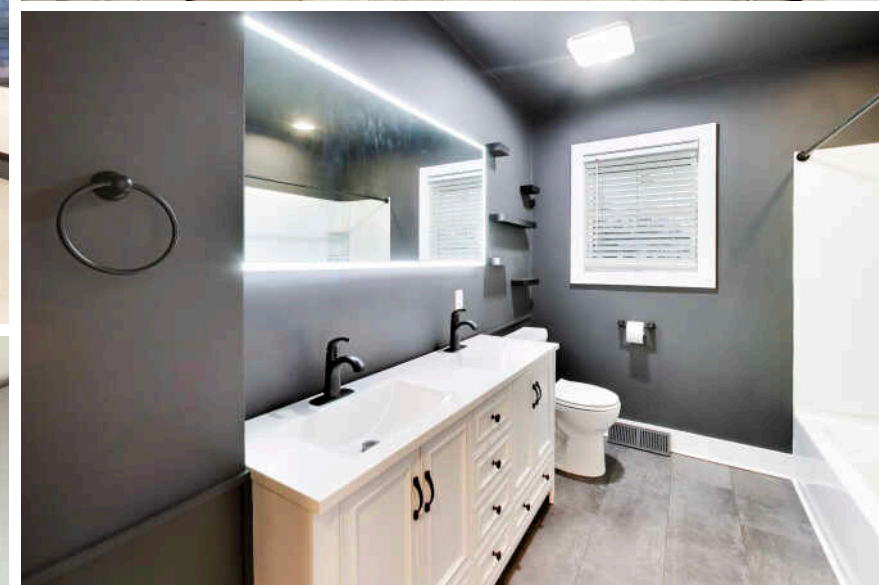


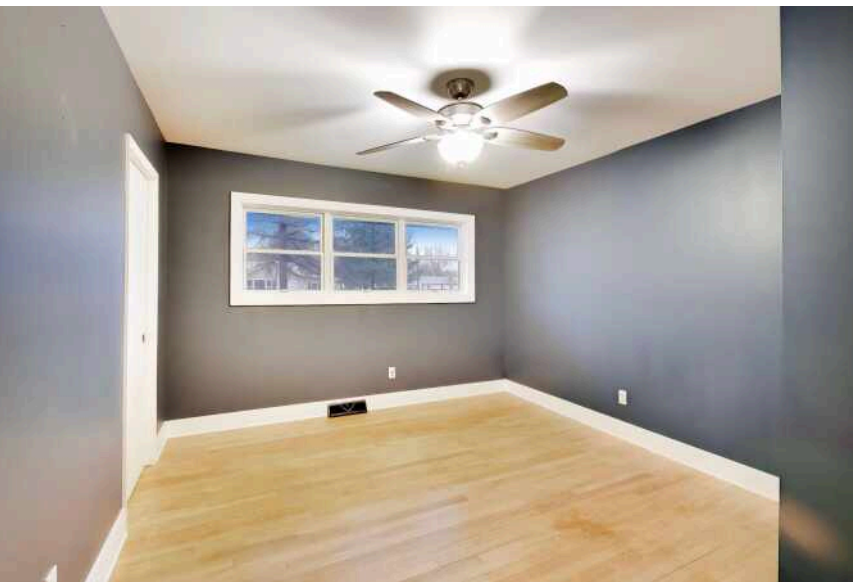
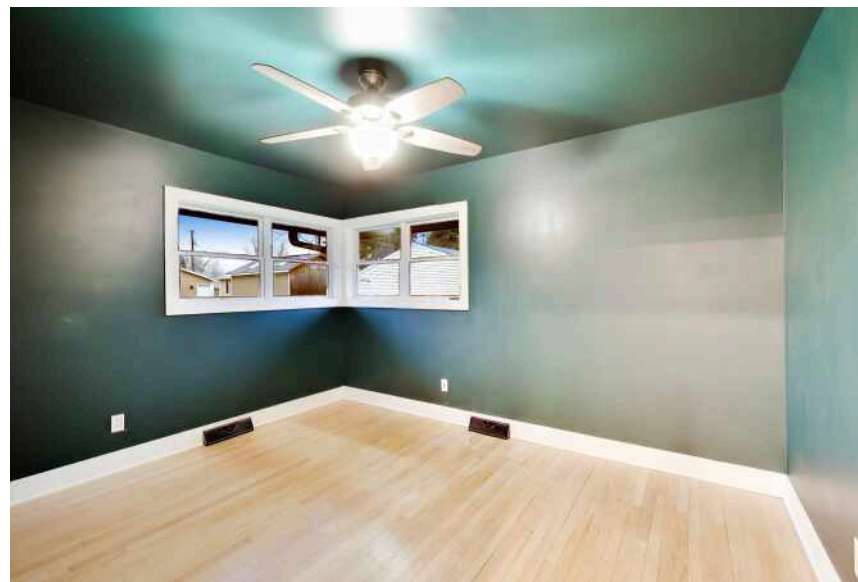


## SLEEK MODERN STYLE MEETS MID-CENTURY SOUL OFFERED AT \$349,000 | 3 BEDROOMS | 1 BATH

Welcome to a home that perfectly balances timeless architectural character with a complete 2025 "top-to-bottom" transformation. Newer construction options may offer square footage; this home offers an authentic Mid-Century Modern (MCM) soul elevated by modern upgrades and a sophisticated, moody color palette. The siding, roof, gutters, and soffits were replaced in 2025, and new windows were installed throughout in 2023. Step inside to find a beautiful new kitchen with granite countertops, soft-close cabinetry, and a full suite of stainless steel appliances. The solid oak flooring, two natural fireplaces, open floor plan, large windows, a covered breezeway, and a concrete patio create an authentic MCM feel. Smart home ready with an Ecobee smart thermostat and dual Ring doorbells.

3 BEDROOM  
1 BATH  
TAXES: \$3,303





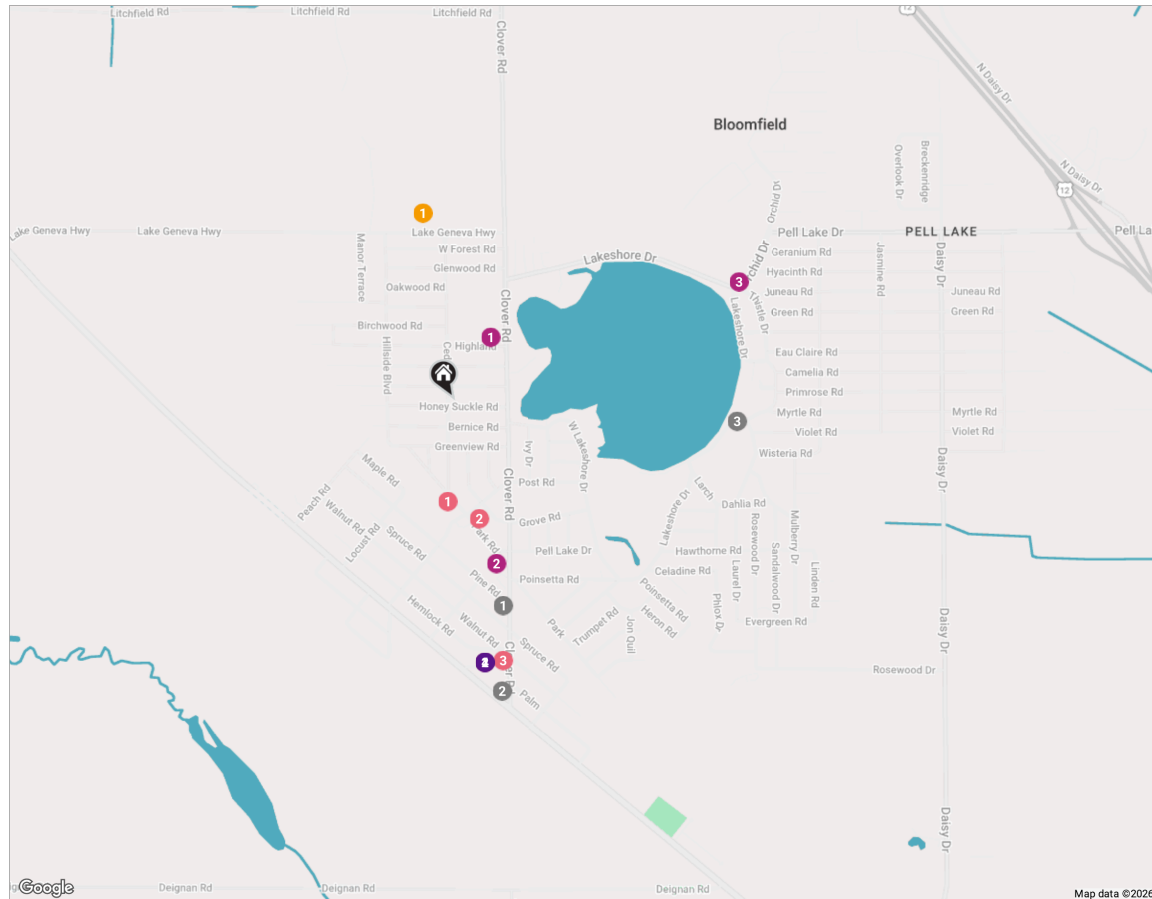


## **PELL LAKE IS AN IDEAL RETREAT IN THE SCENIC VILLAGE OF BLOOMFIELD.**

Named after the prairie flowers that were prevalent in the area at the time of its founding, Bloomfield remains home to more than 10,000 acres of agricultural land today.

Known as a peaceful haven, residents enjoy convenient access to a beach, picnic area, and playground. The village hosts a number of events and recreational activities throughout the year, including the police department's Kid's Day Out and a Fourth of July festival that features a parade and fireworks over Pell Lake.

Local real estate includes everything from lakefront properties to rural estates and cozy ranch-style homes.



**RESTAURANTS**

- 1 2 Brothers Sports Bar & Grill  
N, 0.5 MI
- 2 Upper Crust Pizzeria  
N1070 COUNTY TRUNK H, 0.7 MI
- 3 Spoodoggers Bar and Grill  
N1320 SOUTH LAKE SHORE DRIVE,  
0.7 MI

**SHOPPING**

- 1 Dollar General  
N1411 CLOVER ROAD, 0.2 MI
- 2 Pell Lake Mobile  
N, 0.4 MI
- 3 Lakeside Country Store  
N1457 ORCHID DRIVE, 0.7 MI

**SCHOOLS**

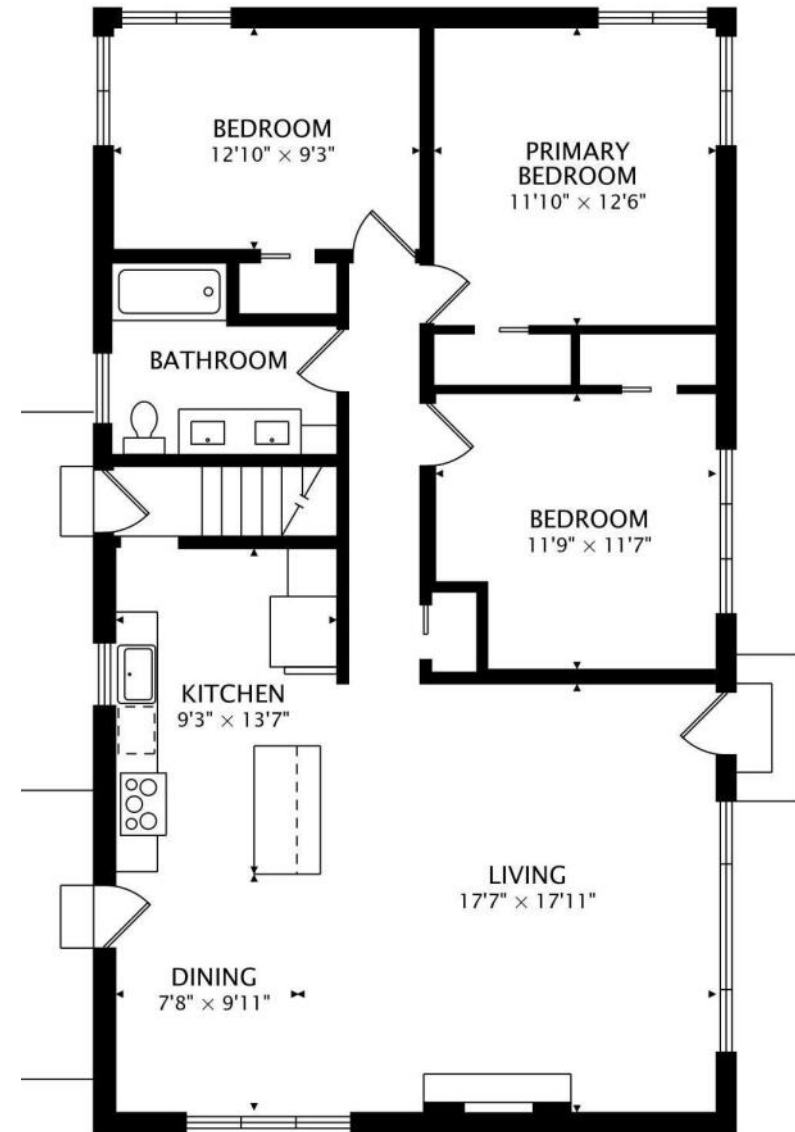
- 1 Star Center Elementary  
School  
W1380 LAKE GENEVA HIGHWAY, 0.4 MI

**ENTERTAINMENT**

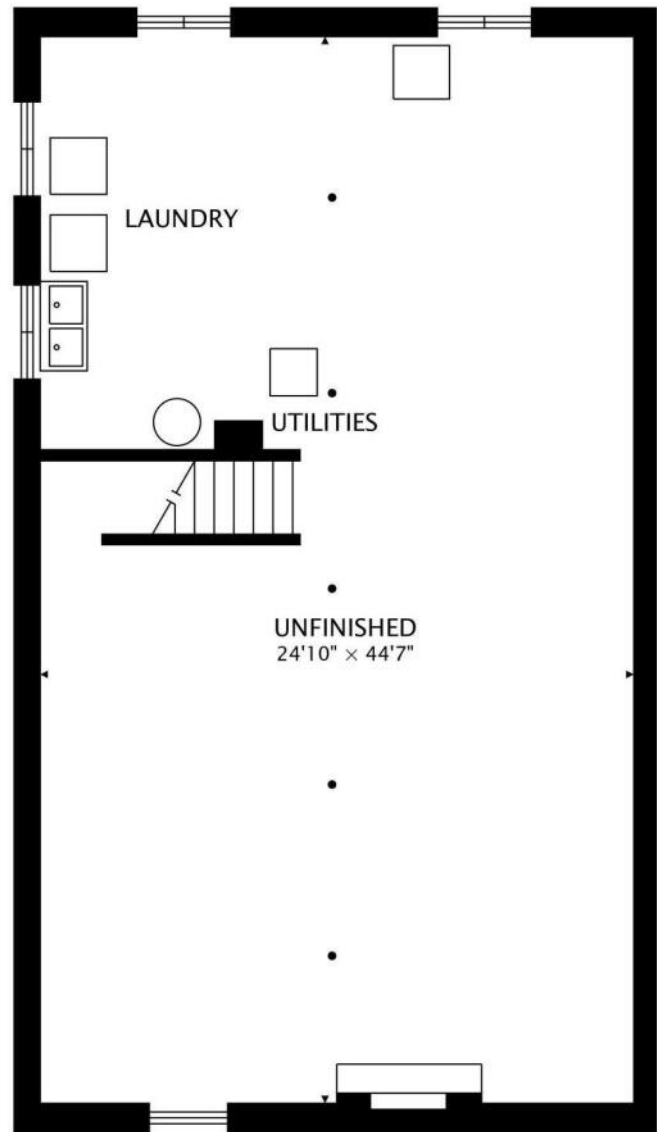
- 1 United States Postal Service  
N1265 PARK ROAD, 0.2 MI
- 2 Bloomfield Tire & Auto  
N1238 PARK ROAD A, 0.3 MI

**SERVICES**

- 3 Bloomfield Genoa City Fire  
& Rescue  
1113 CLOVER ROAD, 0.6 MI
- 4 Bloomfield Clerks Office  
N1100 TOWN HALL ROAD, 0.6 MI
- 1 Bloomfield Police  
Department  
N1100 TOWN HALL ROAD, 0.6 MI
- 2 Bloomfield Town Hall  
N1100 TOWN HALL ROAD, 0.6 MI



**MAIN**  
1263 sq ft



**LOWER**  
1227 sq ft BELOW GRADE



## DANA RAUHUT

1 8154826335

8479576500

DANARAUHUT@ATPROPERTIES.COM

**DANA RAUHUT**  
— ELEVATING LIFESTYLES —

**@properties** | **CHRISTIE'S**  
INTERNATIONAL REAL ESTATE