



W4021 KELLY RD LAKE GENEVA

W4021 KELLY RD • LAKE GENEVA
W4021KELLYRD.INFO



CINDY MAHER SALESPERSON

262.745.5192 mobile
262.348.0200 office
cmaher@atproperties.com



FRED A GELDERMANN BROKER

262.749.8909 mobile
262.348.0200 office
fredg@atproperties.com

W4021 KELLY RD • LAKE GENEVA
W4021KELLYRD.INFO





W4021 KELLY RD

ROOM DIMENSIONS

Family Room	18'x30'
Dining Room	13'x11'
Kitchen	15'x25'
Primary Bedroom	12'x20'
Second Bedroom	12'x12'
Third Bedroom	12'x10'
Fourth Bedroom	16'x23'
Fifth Bedroom	14'x17'
Sixth Bedroom or Bonus Room	22'x13'
Rec Room/Nook	14'x12'
Family Room	30'x18'
Foyer	10'x6'
Laundry	7'x8'
Kitchen Lower Level	13'x20'

FEATURES

- Executive Private Gated Home
- 2.44 Acres
- Wood Floors & Granite
- Formal Dining Room
- Fireplace
- Master Suite
- 5 Spacious Bedrooms & Additional Bonus Room
- 4.5 Baths
- Fully Finished Lower Level with Large Living/Rec Area
- Full Kitchen in Lower Level
- Main Floor Laundry
- 3 Car Attached Garage
- Plenty of Additional Parking
- Balcony Overlooking Yard for Entertaining
- Great Location Within Minutes of Downtown Lake Geneva



CINDY MAHER SALESPERSON

262.745.5192 mobile
262.348.0200 office
cmaher@atproperties.com



FRED A GELDERMANN BROKER

262.749.8909 mobile
262.348.0200 office
fredg@atproperties.com



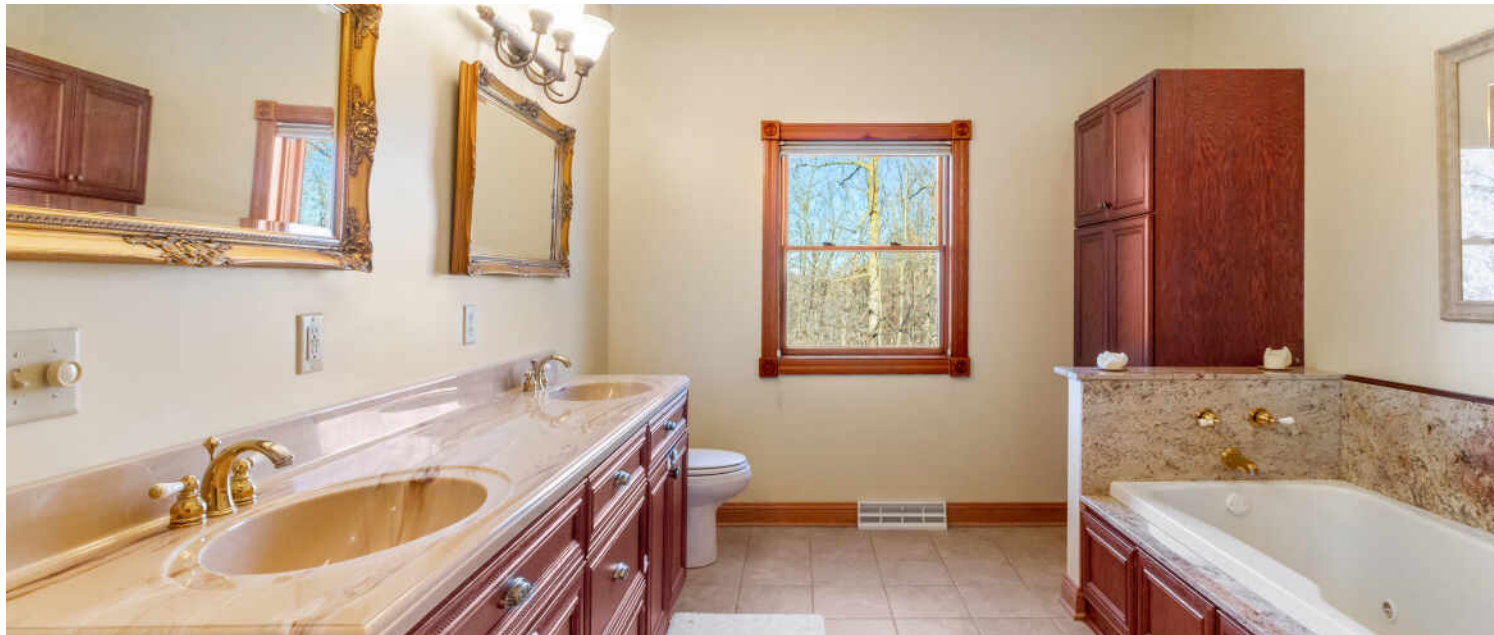






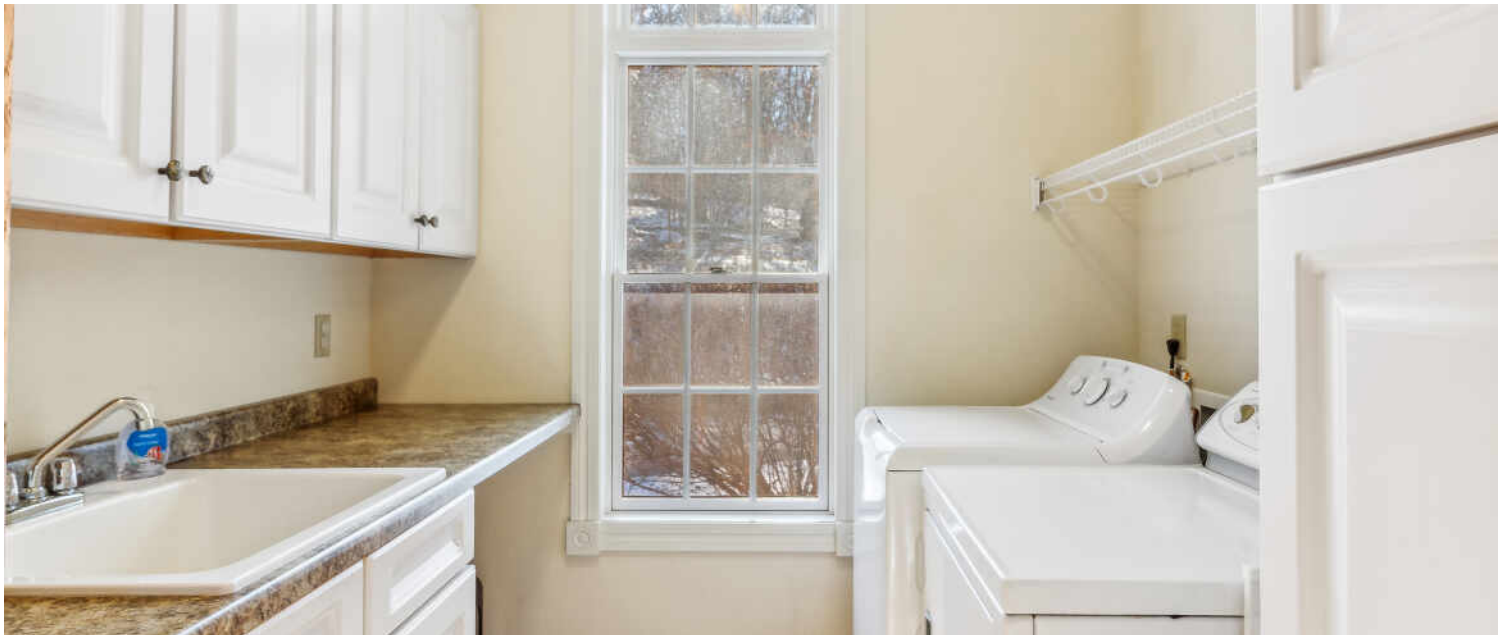


























HAVE YOU EVER GONE ON VACATION, FALLEN IN LOVE WITH THE AREA AND DECIDED YOU'RE NEVER LEAVING? WELCOME TO **LAKE GENEVA.**

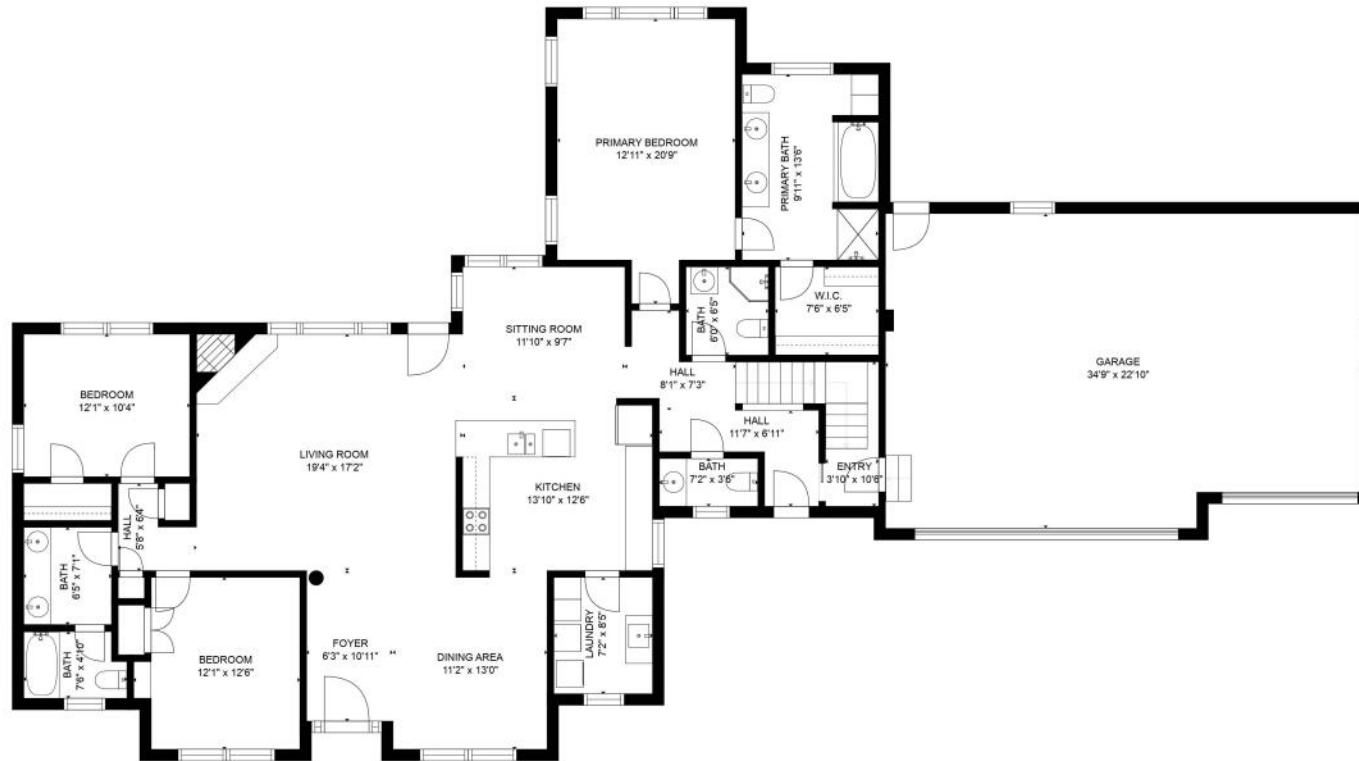
Locals love the natural beauty found in Lake Geneva. The community offers unbeatable water views and countless outdoor activities, from sailboat racing and recreational boating to swimming and fishing. Quaint shops and restaurants are another draw for locals and visitors alike.

The picturesque city on the eastern shore of Geneva Lake attracts visitors from Illinois and beyond with its natural beauty, wonderfully-preserved buildings, and, of course, Geneva Lake.

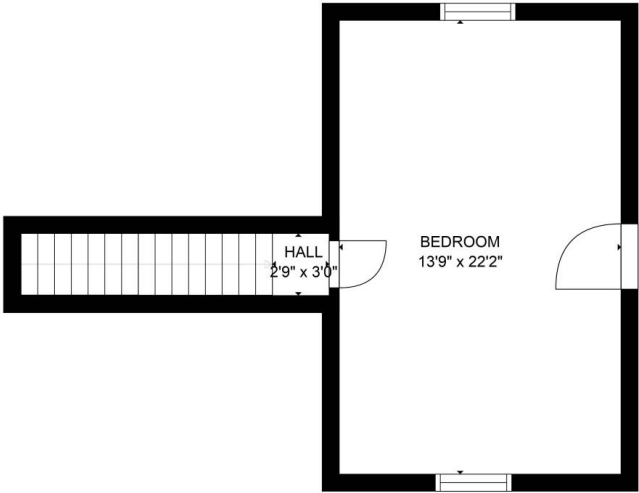
Whether you're looking for a great getaway or a place to call home, Lake Geneva checks all the boxes: Boating, golfing, exploring, hiking, lake cruises, fine dining, charming shops, nature preserves...the list goes on. Locals and visitors also enjoy the many parks in the area, including Library Park, which offers access to a 26-mile lakefront path that leads to Big Foot Beach State Park, Fontana, and Williams Bay. Meanwhile, Flat Iron Park draws crowds with summer events like Art in the Park, Taste of Lake Geneva, and Lake Geneva Jaycees Venetian Festival. Winterfest is another popular event, featuring snow sculpting competitions, ice fishing, food tastings, and more.

Homebuyers and vacationers have a variety of properties to choose from, with the community boasting everything from cozy cabins and cottages to lakefront homes and Victorian mansions.

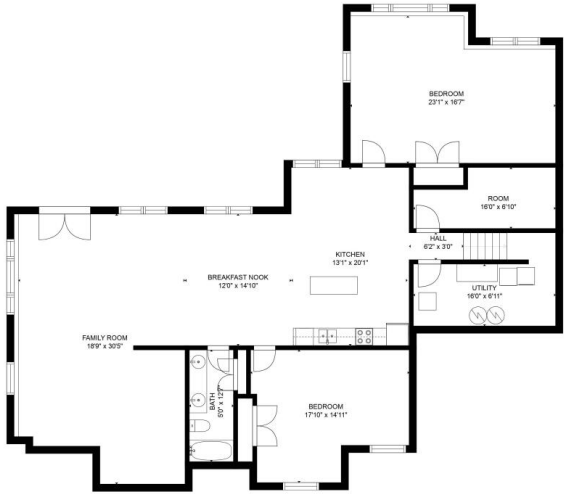
Lake Geneva is located 75 miles from downtown Chicago and 45 miles from Milwaukee.



GROSS INTERNAL AREA
 FLOOR 1: 1988 sq. ft, FLOOR 2: 2033 sq. ft
 FLOOR 3: 353 sq. ft, EXCLUDED AREAS:
 GARAGE: 763 sq. ft
 TOTAL: 4374 sq. ft
 MEASUREMENTS ARE CALCULATED BY CUBICASA TECHNOLOGY. DEEMED HIGHLY RELIABLE BUT NOT GUARANTEED.



GROSS INTERNAL AREA
FLOOR 1: 1988 sq. ft. FLOOR 2: 2033 sq. ft.
FLOOR 3: 353 sq. ft. EXCLUDED AREAS:
GARAGE: 763 sq. ft.
TOTAL: 4374 sq. ft.
MEASUREMENTS ARE CALCULATED BY CUBICSCAN TECHNOLOGY. DEEMED HIGHLY RELIABLE BUT NOT GUARANTEED.



GROSS INTERNAL AREA
FLOOR 1: 1988 sq. ft. FLOOR 2: 2033 sq. ft.
FLOOR 3: 353 sq. ft. EXCLUDED AREAS:
GARAGE: 763 sq. ft.
TOTAL: 4374 sq. ft.
MEASUREMENTS ARE CALCULATED BY CUBICSCAN TECHNOLOGY. DEEMED HIGHLY RELIABLE BUT NOT GUARANTEED.

