

**2012 BURR OAK**  
GLENVIEW



## 2012 BURR OAK

### ROOM DIMENSIONS

#### FIRST LEVEL

Foyer.....	20' x 14'
Living Room.....	22' x 17'
Dining Room.....	17' x 17'
Kitchen.....	19' x 18'
Breakfast Room.....	21' x 20'
Family Room .....	32' x 21'
Home Office.....	15' x 14'
Den .....	21' x 13'
Music Room .....	13' x 13'
Bedroom 4.....	15' x 12'
Mud Room.....	14' x 11'

#### SECOND LEVEL

Master Bedroom.....	23' x 15'
Master Sitting Room .....	22' x 14'
Master WIC.....	10' x 08'
Master WIC.....	07' x 06'
Bedroom 2.....	26' x 14'
Bedroom 3.....	15' x 14'
Laundry Room .....	08' x 14'

### MAIN FLOOR: FOYER, LIVING ROOM, DINING ROOM, KITCHEN, BREAKFAST ROOM, FAMILY ROOM, OFFICE, MUD ROOM, LAUNDRY ROOM, GUEST POWDER ROOM, POOL SHOWER ROOM, MUSIC ROOM, DEN/ GAME ROOM WITH WINE CELLAR, BEDROOM SUITE FOUR

- Foyer: Marble tiled flooring, 2 story ceilings, double door entry, recessed lighting, crown molding
- Staircase: oak flooring, white risers, wrought iron railing with oak balusters, curved staircase to 2nd floor, built-in nooks for artwork display
- Living Room: cherry hardwood floors with inlays, gas starter wood burning fireplace with marble surround and white mantelpiece, coffered ceiling, recessed lighting, overlooks back garden
- Dining Room: cross diagonal hardwood flooring, crown molding, French doors

- leading to patio, Kitchen, Foyer & Kitchen, wainscoting and chair rail molding
- Kitchen: Diagonal hardwood flooring, granite counters & full height backsplash, SubZero refrigerator, Miele built-in espresso maker, Wolf stainless steel 6 burner range with griddle & double oven, Viking professional grade vent hood, Miele dishwasher, built-in pasta bowl/drain with Grohe faucet, double bowl stainless steel sink, Sharp Insight Pro microwave, Wolf warming drawer, garbage disposal; double-tiered island with seating for 6 along with decorative pendant lights; Two built-in hutches with in cabinet lighting & storage for china & glassware, U-Line beverage fridge, recessed lighting, crown molding
- Breakfast Room: diagonal hardwood flooring, triple crown molding, French doors and transom windows bringing in loads of sunlight, designer lampshade light fixture over breakfast table, conveniently nestled between Kitchen and Family Room



#### CONNIE DORNAN

TOP 1% BROKER NATIONWIDE  
5 TIME CHICAGO MAGAZINE FIVE STAR PROFESSIONAL AWARD WINNER  
CLHMS, SFR, E-PRO, QSC, & REO

847.208.1397 mobile | 847.998.0200 direct  
Connie@ConnieDornan.com





- Family Room: diagonal hardwood flooring, coffered ceilings, French doors lead to patio, arched entryway into Breakfast Room, recessed lighting, stone fireplace, built-in entertainment center
- Music Room: cherry hardwood floors, crown molding, recessed lighting, built-in book/display shelving, sliders to patio, pocket doors provides additional privacy
- Den/Bar Room: chevron shaped hardwood flooring with inlays, wine cellar with racks, bar includes: granite counters, cabinetry, U-Line mini fridge, U-Line wine cooler, undermount stainless steel sink; paneled ceiling with recessed lighting, French doors to front garden, wainscoting and chair rail
- Main floor Bedroom: Brazilian cherry hardwood flooring, vaulted ceiling, recessed lighting, views of back garden, built-in armoires
- Main Floor Bath: travertine flooring and wall surround, built-in jetted tub with mosaic tiled accented tub surround, stand up shower with frameless glass door, brushed nickel plumbing fixtures, neutral commode, vanity with travertine counter and Kohler undermount vanity sink, heated flooring
- Office: Brazilian cherry hardwood flooring, built-in cabinetry and shelving, walk-in closet with organizers, crown molding, recessed lighting, wainscoting and chair rail, 5-light chandelier and sconces
- Powder Room: granite flooring and tile surround, Kohler commode, marble counter, decorative undermount vanity sink with Brizo plumbing fixtures, oiled bronze sconces, crown molding and recessed lighting
- Mud/Laundry Room: Travertine flooring, granite counters, built-in cabinetry with pull out drawers, built-in cubbies, access to garage, main floor Maytag Neptune stackable washer/dryer, stainless steel undermount utility sink
- "Swimming Pool" Full Bath: Travertine flooring & wall surround, Kohler commode, stand up shower with frameless shower door, vanity cabinet with onyx counter
- 2nd floor: Master Bedroom, Bedroom Two Suite, Bedroom Three Suite, Laundry Room, barrel ceilings, crown molding, wrought iron spindled staircase, Hall Linen Closet
- Master Bedroom: Brazilian cherry hardwood floorings, double crown molding, double door entry, recessed lighting, HIS & HERS closets with organizers, linen closet
- Master Suite Sitting Room: double door entryway into Master Bedroom, Vaulted ceilings, recessed lighting, hardwood floors
- Master Bath: Travertine tiled flooring, granite counter tops, His & Hers vanities with neutral custom cabinetry & make-up area, Callista vanity sink, Kohler brushed nickel plumbing fixtures, built-in jetted Kohler tub with marble tiled tub surround, stand up shower with frameless glass door, crown molding, recessed lighting, separate water closet with Kohler commode & bidet
- Bedroom Suite Two: Brazilian cherry hardwood floors, recessed lighting, crown molding, double door guest closet, overlooks back garden
- Bedroom Suite Two Bath: Carrera marble tiled flooring & shower/tub surround, brushed nickel plumbing fixtures, Kohler commode, transitional styled neutral cabinetry with overmount glass bowl vanity sink, crown molding, recessed lighting
- Bedroom Suite Three: Brazilian cherry hardwood floors, Two French doors each leading out to balcony overlooking front and back gardens, WIC with organizers, vaulted ceilings, recessed lighting
- Bedroom Suite Three Bath: granite flooring & wall surround, separate make-up area, stand up shower with pebble tiled floor base & built-in sitting stool, brushed nickel plumbing fixtures, Duravit overmount vanity sink on espresso stained base cabinet & recessed lighting
- Laundry: travertine flooring, loads of neutral cabinetry, granite counters, Whirlpool Duet washer/dryer, stainless steel utility sink, access to attic with pull down staircase

#### **ADDITIONAL FEATURES:**

- Tempstar HVAC
- Security system
- Three Car Heated Garage
- In-Ground Swimming Pool
- Stone & Brick exterior
- Circular stone driveway
- Outdoor Kitchen with pergola
- Professionally Landscaped



FOYER





FOYER



LIVING ROOM





LIVING ROOM



DINING ROOM





DEN



KITCHEN





KITCHEN



KITCHEN





KITCHEN



KITCHEN





BREAKFAST ROOM



FAMILY ROOM





FAMILY ROOM



FAMILY ROOM





HOME OFFICE





MASTER BEDROOM



MASTER BEDROOM





MASTER BATHROOM



BEDROOM



BATHROOM





BEDROOM



BATHROOM



BEDROOM





BATHROOM



BATHROOM





DEN



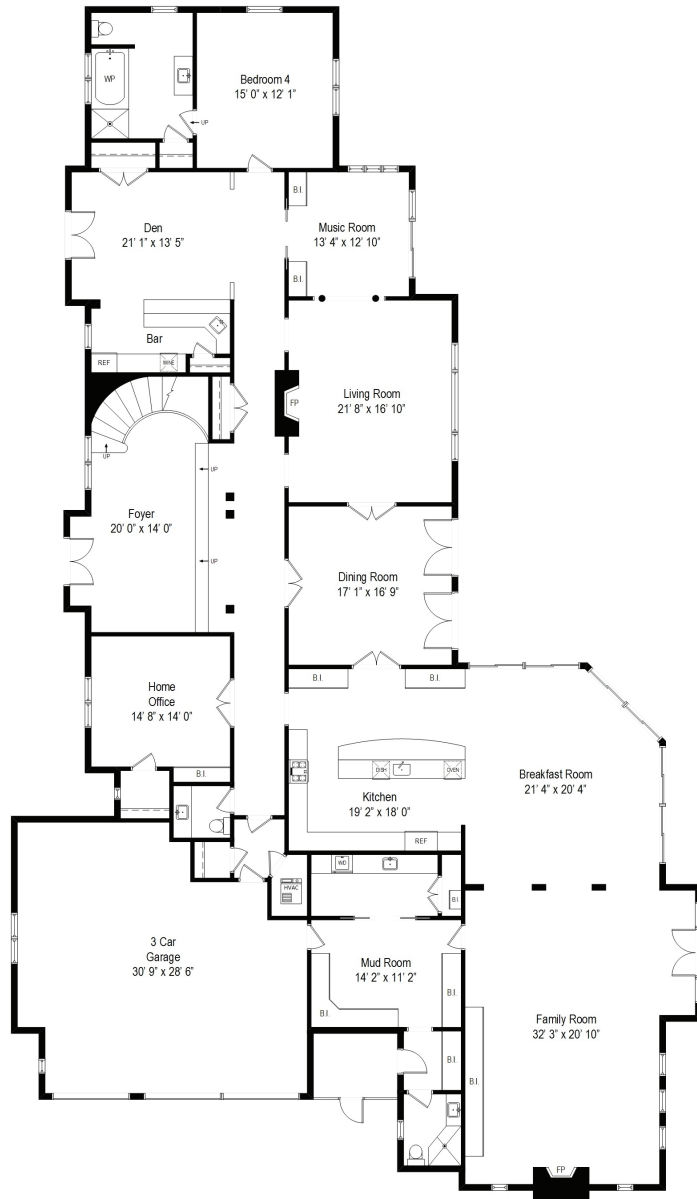
LAUNDRY ROOM



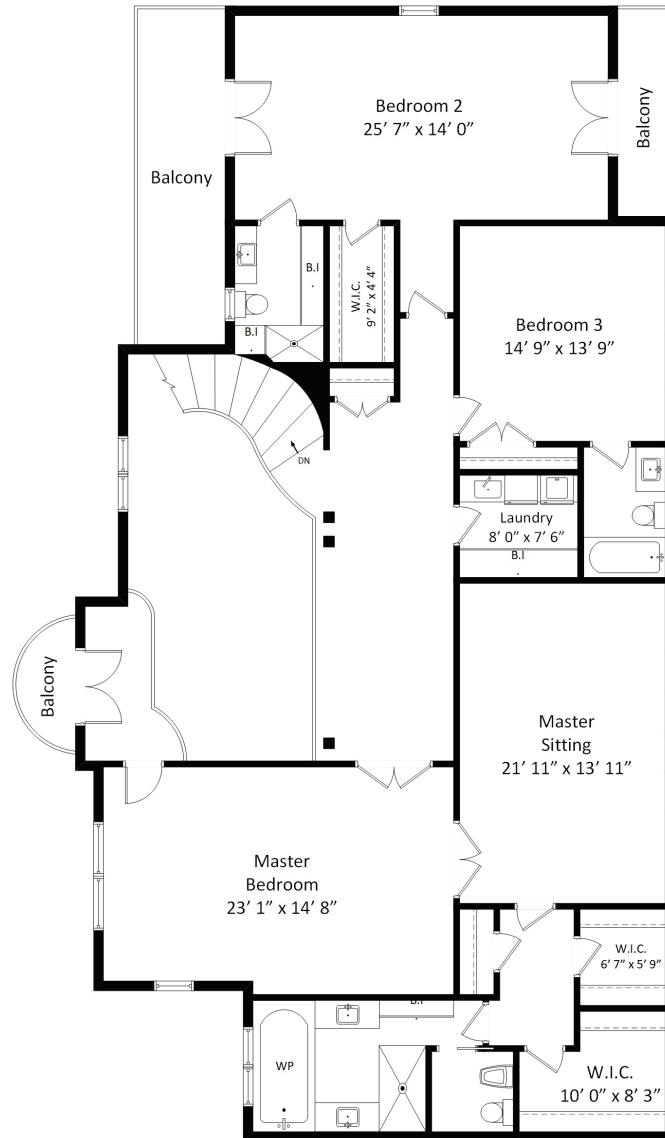


BACK YARD PATIO

## LEVEL 1



## LEVEL 2





## ABOUT GLENVIEW

The Village of Glenview had 350 residents when it was incorporated in 1899. Today, the population is almost 45,000. Located in Cook County, the Village's fine amenities and services, excellent schools, 34 parks and playgrounds covering more than 290 acres, numerous options for shopping and dining and proximity to local expressways and commuter trains have made it one of Chicago's premier suburbs -- a vibrant, thriving community that manages growth with success and style.

### History

The entire Northfield Township originally was known as the town of Northfield. There were different names for various areas within the community. The Post Office demanded that an official name be selected, whereupon a special meeting of the villagers was called. Various names were suggested such as Rugenville, Glenvarr, Glendale, Glengrove, Glen Hollow, Oak View, and Glenview. The name Glenview won the majority vote on May 7, 1895. The village was incorporated in 1899. Much of the Glenview area remained farmland but after World War II, developers such as Tom Sullivan began to give the township its current suburban appearance.

### The Park

"The Park" is one of the oldest neighborhoods in the village. Located near the center of Glenview, just south of the Glen development, The Park was established as home to a religious society in 1894 by Hugh Burnham, the first village president and nephew of architect Daniel Burnham. This religious society is based on the writings of Emanuel Swedenborg a scientist and theologian who lived and wrote in the 1700's. In the late 1890s through the turn of the century, New Church members purchased 40 acres of land and built their houses in an oval surrounding a common park area where the church and school were built. Architect Swain Nelson, one of the designers of Lincoln Park, designed the neighborhood.

As part of the New Church service mission to be universally accepted as a guidepost for kindness and character, today, the Glenview New Church Schools are open to many students beyond the congregation and the church has been updated and expanded to accommodate a much larger Sunday service. Despite its new open focus and broadening congregation, the original church in the center and many of the surrounding buildings remain the same today as they were in 1900.

### Naval Air Station

The control tower of the village's former Naval Air Station has been converted to shops as part of The Glen Town Center. Naval Air Station Glenview was a major facility in Glenview for many years. It was the host for a number of squadrons, including the Coast Guard Air/Sea rescue helicopter service for Chicago/Lake Michigan and a squadron of P-3 Orions which had the mission of East Coast antisubmarine warfare. The rationale for basing the squadron there was that so many reserve staff were in the central United States, and it was convenient to base the facility near the staff. As a 1-2 hour checklist had to be executed before scanning the seas, there was actually little dead time in the flight to the coast. The base consisted of 1 million cubic yards (800,000 m<sup>3</sup>) of concrete, 1.5 miles (2.4 km) of runways and 108 U.S. Navy buildings.

### The Glen

In 1995, the base was closed as part of the Base Realignment and Closure military restructuring process. The land was deeded back to Glenview by the U.S. Department of Defense. A reuse plan was completed by the Village of Glenview in 1995 and updated into a master plan by Skidmore, Owings & Merrill in 1998. The village then assumed the role of Master Developer. The 1,121-acre (4.54 km<sup>2</sup>) development was named "The Glen" in 1999. It comprises approximately 15% of the area of Glenview. It contains new homes, offices, and shopping centers, including The Glen Town Center. Among other amenities, it includes a lake, soccer fields, walking and biking trails, two golf courses, Kohl Children's Museum, the Glenview Park District Park Center, Attea Middle School, and the Glen/North Glenview commuter train station.



## Lyon Elementary

### About Us

Lyon Elementary School is a K-2 school in Community Consolidated School District 34, located in Glenview, Illinois. Lyon has a student population of just under 500.

- Learning Resource Center
- Early Intervention PreKindergarten
- Early Intervention Kindergarten
- Special Education – NSSD
- Student Resource Staff
- Fine Arts Programs; Visual Art, PE, Music & Drama
- iPad initiative

School Mascot/School Colors: Lion/Blue & Gold  
Cluster School: Pleasant Ridge, 3rd to 5th Grades

All students have weekly experiences with Visual Art, Drama and Music Education. First through Second graders have daily Physical Education, while Kindergarten has weekly Physical Education. The school is serviced by a full time Social Worker and Psychologist. Students needing additional support services in academics, speech, or physical therapy are also serviced.

Lyon School is a dynamic, child-centered learning community educating children. We pride ourselves with a dedicated staff that provides quality educational programs suited to meet the needs of each individual child in a supportive environment.



1335 Waukegan Road  
Glenview, IL 60025  
Main Office# (847) 998-5045



**Pleasant Hill Elementary School**  
For 1<sup>st</sup> through 6<sup>th</sup> Grades

### Our Mission

The Pleasant Hill community will continually promote and practice respect, compassion, integrity, tolerance, self-discipline, and dignity. We will develop strong academic and interpersonal skills necessary to be successful in the future. By using cooperative efforts and open communication, we will become effective problem solvers within a quality learning environment.

**Pleasant Hill School**  
434 W. Illinois Avenue  
Palatine, IL 60067-6745



**Attea Middle School**  
**2500 Chestnut Ave.**  
**Glenview, IL 60026**



### About Attea Middle School

#### Attea Middle School Mission Statement

Attea Middle School will provide an excellent middle school educational program that

- installs high expectations
- develops the knowledge and skills necessary for successful individual achievement and lifelong learning
- connects learning to life
- fosters partnerships with family and community
- shapes caring and ethical citizens

#### The Middle School Program

Attea Middle School is a high-performing school that is responsive to the developmental needs of young adolescents as they make the transition between childhood and adolescence. While holding high expectations for all students' academic achievement, teachers are careful to see that instructional strategies are appropriate to adolescent learners.

As a Middle School, Attea is characterized by a(n)

- philosophy based on the unique needs and characteristics of the young adolescent;
- team of educators knowledgeable about and committed to the young adolescent;
- interdisciplinary team organization;
- flexible block schedule;
- positive and collaborative school climate;
- physical plant where teams are housed together for classes and large areas for full team sessions;
- emphasis on tech use of higher-order thinking skills and hands-on instructional strategies; and
- commitment to regular involvement of families in the education of young adolescents by keeping them informed of student progress and school programs and by giving them meaningful roles in the schooling process.



## Welcome to Glenbrook South

**Our Mission:** Glenbrook South High School is a learning community dedicated to students and committed to quality of thought, word and deed.

Glenbrook South High School is one of two comprehensive high schools in District 225 and primarily serves the Village of Glenview. Glenbrook South High School is a learning community dedicated to students and committed to quality of thought, word and deed.

Built in 1962, the GBS campus has been expanded and renovated to keep pace with enrollment, academic programs, technology, fine arts and science. Today's complex, with more than 667,000 square feet, spans across 72 acres and provides a learning environment enhanced by natural light, a welcoming atmosphere and a layout that supports academic areas, beauty of design, security, state-of-the art cafeterias and energy conservation.

Special features include a 1,500-seat auditorium, Lyceum, Orchestra, Band room, Choral room, Drama/Dance room, Graphic Design lab, Multi-media labs, Autos lab, Foods lab, Courtyard and Gazebo, Student Activities Center, Radio and TV studios, Greenhouse, Library, Media Centers and the Titan Learning Center.

Glenbrook South offers extensive curricular offerings in English, Math, Science, Art, Social Studies, World Languages, Applied Technology, Music, Business Education, Radio/TV, Driver Education, Physical Education and Family and Consumer Science.

In addition, GBS offers 24 Advanced Placement courses; more than 60 clubs and activities; 29 interscholastic and club sports; American Sign Language, French, German, Japanese, Mandarin Chinese and Spanish; and the Glenbrook Academy of International Studies in English, Social Studies and World Languages.

In 2012, more than 95 percent of graduating students were college bound to 149 different institutions throughout the world. The average ACT composite score is 24.9, and 89 percent of students earned AP scores to qualify for college credit.

# GALLERY PARK

## Recreation Map

- Lake Loop Trail = 1.5 miles
- Park Loop Trail = 1.8 miles
- Lakeside Interpretive Trail = 1.5 miles
- F Designated Fishing Location



### PARK RULES:

Park is open at sunrise and closes at 11:00 pm. The water spray area at Little Bear Garden is open generally from Memorial Day to Labor Day.  
 Alcohol is prohibited.  
 No boating, swimming or ice skating.  
 Grills are not permitted.  
 Do not feed the geese.  
 By ordinance of the Village of Glenview, a dog must be on a leash on any sidewalk, street or public place (Ord. No. 1402). No dogs are permitted in Little Bear Garden. Fines begin at \$100 (Ord. No. 4174).

### FISHING RULES:

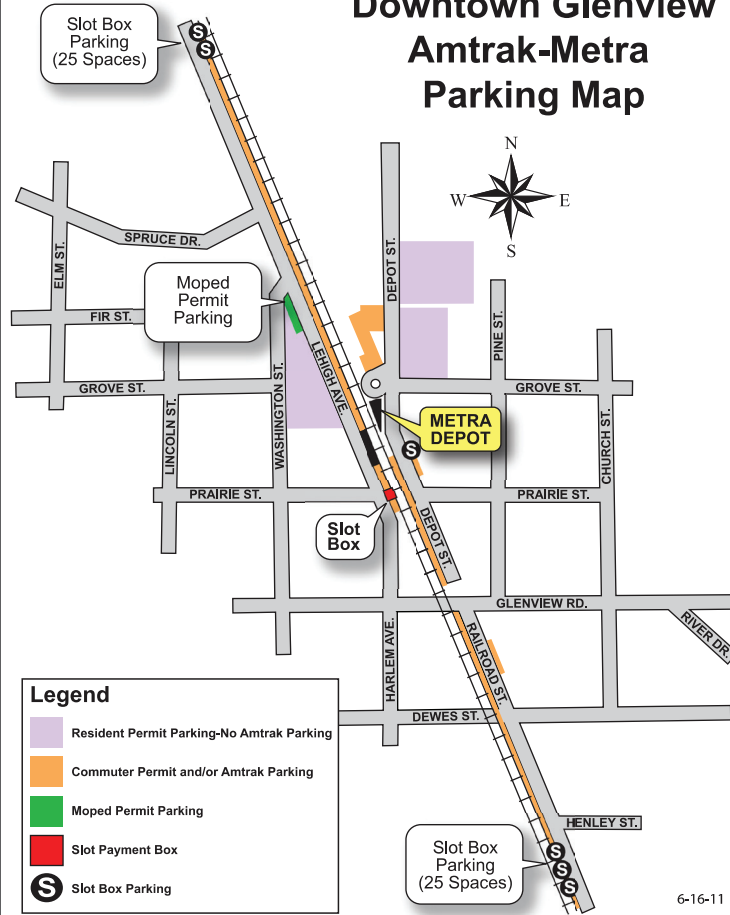
A valid state fishing license is required.  
 No boating, swimming or ice skating.  
 Catch and release fishing is strictly enforced. Carp are the exception and may be taken.  
 Fish in designated areas only.  
 Poles are hand-capped accessible.  
 Fishing Hours: 5 am-8 pm.  
 Alcohol is prohibited.  
 Season: May 15-November 15.  
 Emptying of bait buckets in lake is prohibited.  
 Spin, jig and bow and arrow fishing are prohibited.  
 One pole limit per person.



Common Carp is a nonnative species due to its tendency to become an invasive species, destroy vegetation and cause shoreline erosion.

1-11-20

## Downtown Glenview Amtrak-Metra Parking Map



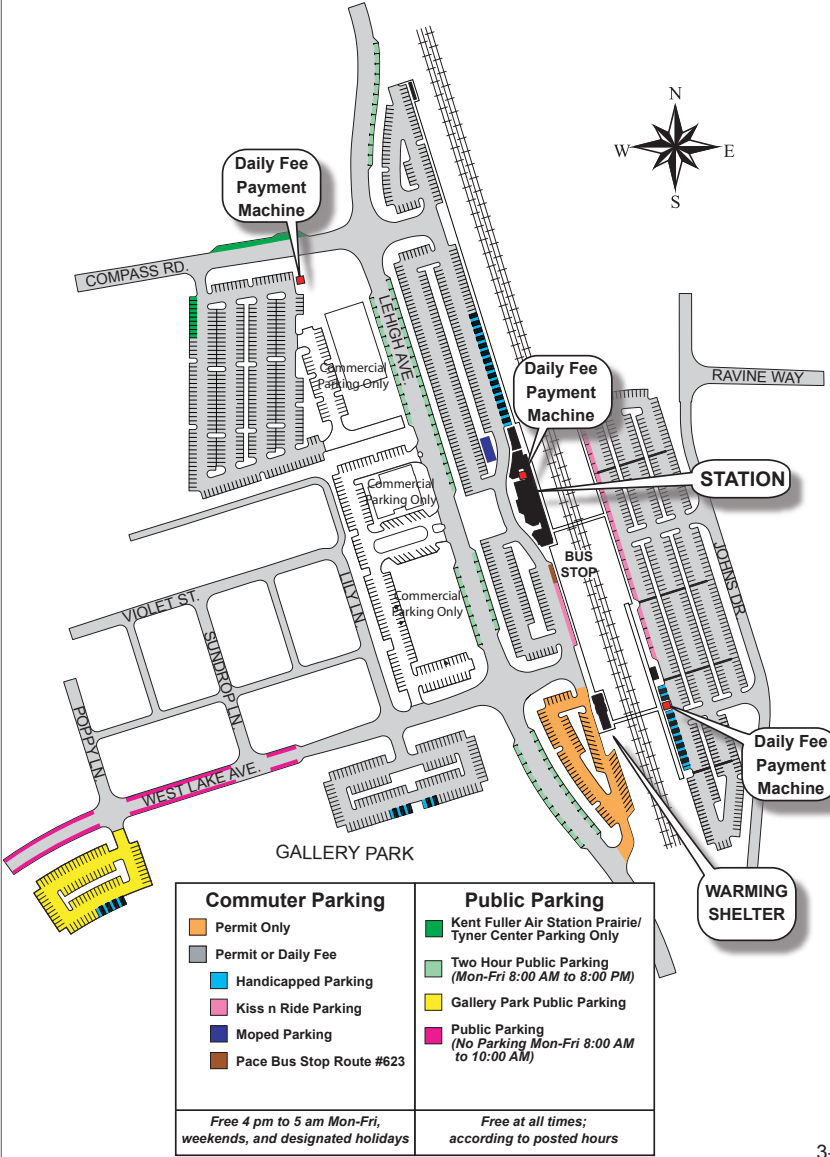
### Legend

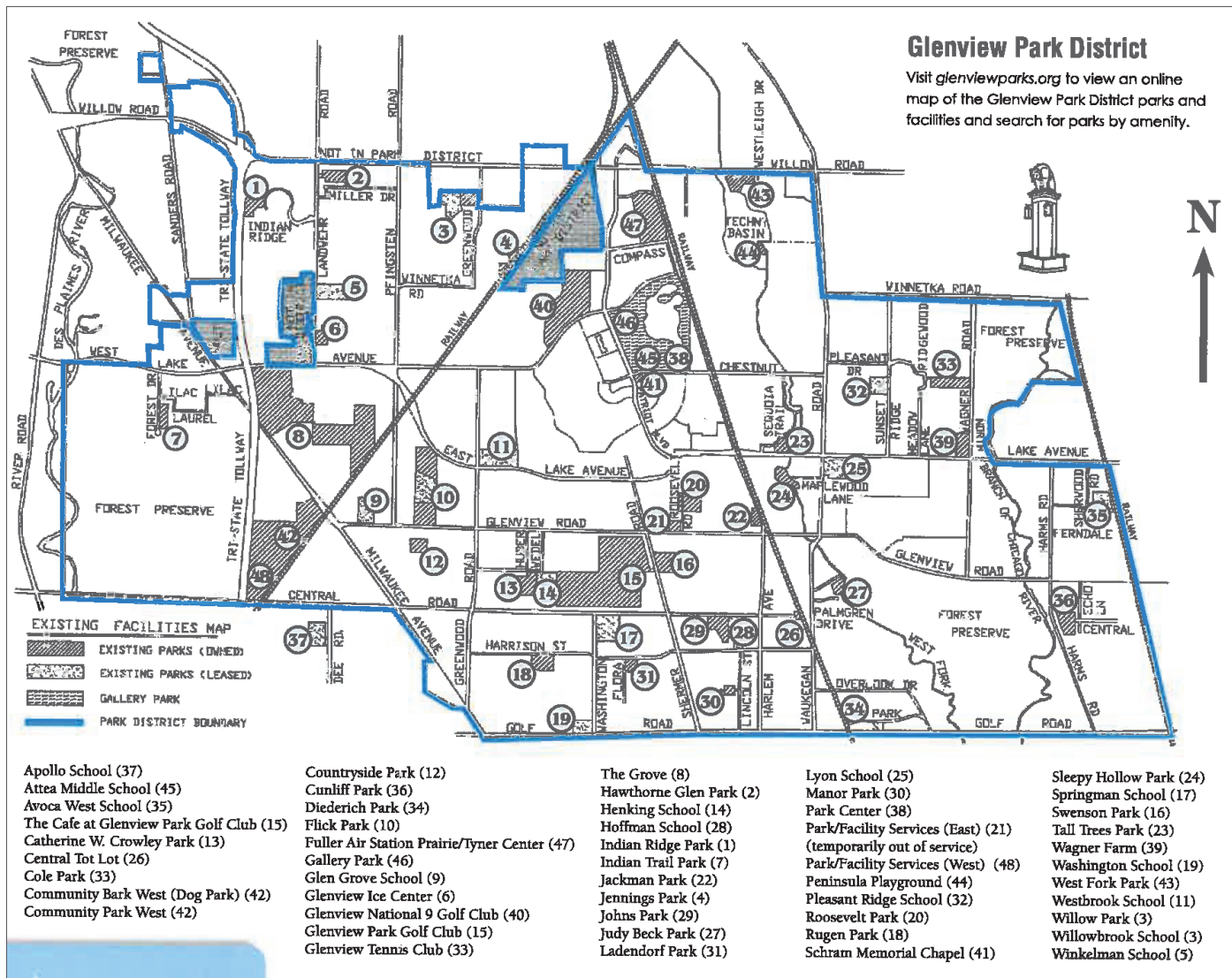
- Resident Permit Parking-No Amtrak Parking
- Commuter Permit and/or Amtrak Parking
- Moped Permit Parking
- Slot Payment Box
- Slot Box Parking

6-16-11



# The Glen of North Glenview Parking Map







## Park Facilities & Features

Numbers ( ) refer to map location opposite page.

### OWNED:

	Acres	Sand Volleyball	Skate Park	Playground	Bandquet Facilities	Tennis Courts	Basketball Courts	Swimming Pool/Water Park	Bocce Ball (B), Disc Golf (D)	Baseball Backstop	Soccer (S), Football (F)	Pickleball	Walking Path (miles)	Dog Walking Permitted	Dog Park	Nature Center	Parking Spaces	Room Rentals Available	Fieldhouse Max. Capacity	Picnic Area/Max. Capacity
<b>*The Cafe, 800 Shermer Road (15)</b>	N/A				*												195			
<b>Central Tot Lot, Central &amp; Lehigh (26)</b>	1.25			*			1										0			
<b>*Cele Park, 1031 Kenilworth Ln. (33)</b>	8.0	*	*	*		4	1		*								21	*	50	50
<b>*Community Park West, 1001 Zenith Drive (42)</b>	95.0	▲	*			▲	1		B, D	*	S		2.08	*	*		318			
<b>Countryside Park, 3600 Countryside Ln. (12)</b>	4.0		*				1		*				.3	*			9			
<b>*Catherine W. Crowley Park, 749 Huber Ln. (13)</b>	10.5		*			2	1		B	*			.5	*			21	*	50	50
<b>*Cuniff Park, 540 Echo Ln. (36)</b>	10.0		*			4	1		*					*			39	*	50	50
<b>Diederich Park, 1 Briar Rd., Golf (34)</b>	3.8		*			2	1							*			7	*	30	30
<b>*Flick Park, 3600 Glenview Rd. (10)</b>	39	▲	*			4	1	*		S, F	*		1.5	*			310	*	50	100
<b>*Fuller Air St. Prairie/Tyner Crt., 2400 Compass Rd. (47)</b>	32															*	0			
<b>*Gallery Park, 2001 Patriot Blvd. (46)</b>	60		*			5							1.8	*			500			
<b>*Glenview Ice Center, 1851 Landwehr Rd. (6)</b>	5.0																240	*		
<b>*Glenview Park Golf Club, 800 Shermer Rd. (15)</b>	110																195			
<b>Glenview National Golf Club, 2800 W. Lake Ave. (40)</b>	39.3																93			
<b>*Glenview Tennis Club, 1800 Wagner Rd. (33)</b>	2.0					8											50	*		
<b>*The Grove, 1421 Milwaukee Ave. (8)</b>	135			*												*	68	*		
<b>Hawthorne Glen Park, 4110 Miller Dr. (2)</b>	7.5		*			2	1		*					*			12			
<b>Indian Ridge Park, 2504 Indian Ridge Dr. (1)</b>	5.0		*			2	1										0			
<b>Indian Trail Park, 1519 Forest Drive (7)</b>	5.2		*			2	1		*					*			16	*	50	50
<b>Jackman Park, 1930 Prairie Street (22)</b>	1.8		*				1										0			
<b>Jennings Park, 3201 Barbara Drive (4)</b>	5.0		*				1										0			
<b>*Johns Park, 2101 Central Road (29)</b>	8.7	▲	*			5	▲		*	F							50	*	50	100
<b>Judy Beck Park, 735 Carriage Hill (27)</b>	3.9		*				1		*				.25				14			
<b>Ladendorf Park, 2541 Harrison St. (31)</b>	9.5		*				1		*				.2	*			6	*	30	30
<b>Manor Park, 200 Lincoln (30)</b>	3.0		*				1		*								0	*	30	30
<b>*Park Center, 2400 Chestnut Ave. (38)</b>	10.1		*	*		3	*										500	*		
<b>Park/Facility Services (E), 1100 Roosevelt Ave. (21)</b>	2.7	TEMPORARILY OUT OF SERVICE																		N/A
<b>*Park/Facility Services (W), 655 Zenith Dr. (48)</b>	4.5																N/A			
<b>Peninsula Pyggy, So. of 1950 Westleigh Dr. (44)</b>	2.5		*														0			
<b>*Roosevelt Park, 2200 Grove St. (20)</b>	11.5		*			3	1	*	*	F				*			76	*	50	50
<b>Rugen Park, 2941 Harrison St. (18)</b>	6.0		*			3	1		*					*			12	*	30	30
<b>*Schram Memorial Chapel, 1799 Patriot Blvd. (41)</b>	1.0			*													0	*		
<b>Sleepy Hollow Park, 1821 Maplewood Ln. (24)</b>	7.5		*						*					*			20	*	50	50
<b>*Swenson Park, 901 Shermer Rd. (16)</b>	10.0	8	*				1		*	S			.5	*			70			
<b>Tall Trees Park, 1421 Sequoia Trail (23)</b>	4.5		*				1		*								0			
<b>*West Fork Park, 1950 Westleigh Dr. (43)</b>	10		*			2	1		*				1.65	*			41			
<b>*Wagner Farm, 1510 Wagner Rd. (39)</b>	18.8			*													80	*		
<b>Willow Park, 2600 Greenwood (3)</b>	7.5		*			3							.7				29	*	50	50

### LEASED:

<b>Apollo School, 10100 Dee Rd. (37)</b>	15.0		*			1/2		*	F								194			
<b>Atlas Middle School, 2500 Chestnut (45)</b>	18.3		*			1/2			S								200			
<b>Avoca West School, 225 Beech Dr. (35)</b>	9.0		*			1/2		*									84			
<b>Glen Grove School, 3900 Glenview Rd. (9)</b>	10.0		*			1											90			
<b>Henking School, 2941 Limmern St. (14)</b>	6.0		*														75			
<b>Hoffman School, 2000 Harrison St. (28)</b>	10.0		*			1/2											50			
<b>Lyon School, 1335 Waukegan Rd. (25)</b>	11.0		*														142			
<b>Pleasant Ridge School, 1730 Sunset Ridge Rd. (32)</b>	10.0		*					*									65			
<b>Springman School, 2701 Central Rd. (17)</b>	15.0		*			1/2			S								174			
<b>Washington School, 2710 Golf Rd. (19)</b>	8.0		*			1/2		*	S								61			
<b>Westbrook School, 1333 Greenwood Rd. (11)</b>	20.0		*					*									125			
<b>Willowbrook School, 2500 Happy Hollow Rd. (3)</b>	11.5		*			2		*									54			
<b>Winkelman School, 1919 Landwehr Rd. (5)</b>	9.5		*					*					.4				60			

▲ Lighted Facilities   \* Beginners Skate Park and In-line Hockey Rink   \* Handicapped accessible restrooms.   Park names in color indicates dog walking permitted

@properties®

 LEADING REAL ESTATE  
COMPANIES *of* THE WORLD®

LUXURY  
PORTFOLIO  
INTERNATIONAL™

