

16 Longmeadow
WINNETKA





beautifully blended materials

A photograph of a modern house with a prominent stone wall on the right side. The wall is made of irregular, grey and brown stones. To the left of the stone wall is a wooden door with a black frame. The house is surrounded by lush greenery, including trees with red leaves in the foreground and various shrubs and plants in the garden. The overall scene is bright and sunny, suggesting a warm day.

ALLOW NATURE
TO RADIATE
from inside to out



360° of beauty





16 Longmeadow

WINNETKA

peaceful zen *oasis*

WELCOME TO 16 LONGMEADOW ROAD

Cohesively designed to be a natural, peaceful oasis with a "Zen" aura from inside to out, this masterful Tony Grunsfeld classic modern ranch radiates a whole new level of designer perfection after a very extensive two-year rebuild from the ground up. Intricate attention was given to every element of this home from the Japanese Maple and custom entrance reflection pond with basalt columns that signal peace and balance to the exterior Colorado stone that seamlessly blends in with nature. Unparalleled finishes abound with aged wide plank French white oak flooring throughout and a hand-selected "clear" cedar plank accent ceiling with in-grove lighting to add texture and warmth. This tranquil sanctuary set on an exquisitely manicured 1-acre lot allows nature to shine in through all 75 new Architect Series Pella floor-to-ceiling windows. The incredible, light-filled floor plan removes borders to depict flowing and endless spaces. Engineered to be sleek and smart with state-of-the-art design and finishes, this home is anything but ordinary; in fact, it's extraordinary.



HIGHLIGHTS

GENERAL

- Architect: Tony Grunsfeld
- Set on 1 acre of manicured grounds
- Built in 1971, re-engineered to perfection in 2021
- Complete gut rehab with only 2 walls remaining from original build
- 5 Beds, 4.1 Baths
- 3-car attached heated garage with epoxy flooring

EXTERIOR

- Exterior stone from Colorado
- Reflection pond with basalt columns from Seattle
- New fencing around the entire perimeter of home
- All new hardscape and landscape with a feng shui perspective
- New tear off roof
- Ran electric through the front stone posts (feasible to add electric gate)
- Exterior pavers installed to be in symmetry with the windows
- Outdoor kitchen located off the kitchen with Colorado stone, quartz counters, and Wolf grill
- Installed storm drains throughout entire property and re-graded entire property
- Extensive new exterior civil engineering

INTERIOR

Flooring

- Calacatta Borghini Gold marble floors that were honed to a particular warm sheen
- Custom aged French white oak wide plank floors
- Epoxy concrete floor in 3-car attached heated garage
- Heated floors in all bathrooms

Countertops

- Honed Quartzite waterfall
- Honed Marble perimeter countertops
- Iceberg Quartz waterfall

Ceilings

- Custom cedar plank accent ceiling
- Atrium custom skylights throughout (4 total)

Windows

- Floor-to-ceiling Architect Series Pella windows throughout
- Glass break sensors with ready to go automatic window treatments

Smart Home Controls

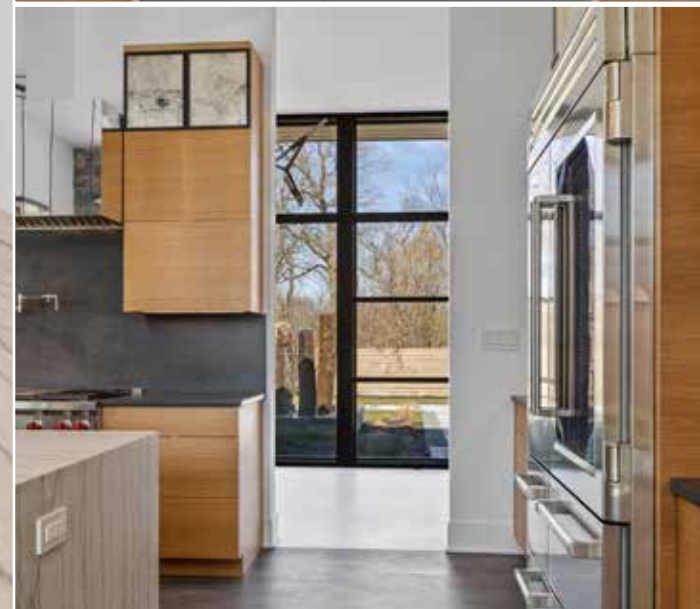
- Control4 AV System serviced by Katz Low Voltage company
 - » Control4: Home Automation and Smart Home Control
 - » Controlled by 3 iPads throughout the home
 - » Control4 automatic shades
- Security system with 2 existing cameras and hookups for 6 additional cameras
- All bedrooms wired for TV's
- Invisible speakers in the ceiling throughout the home

Doors

- Custom-made white oak doors from Washington with concealed hinges throughout for sleek unobstructed design



DESIGNER
SHOWCASE
KITCHEN



FOYER & LIVING ROOM

- Restored original Calacatta Borghini Gold Marble floors
- Custom hand-plastered Venetian accent wall
- Installed gas burning fireplace with marble surround (used to be wood burning)
- LED strip ceiling lighting
- Clear cedar wood accent ceiling in living room, each piece hand selected to add an element of warmth and contrast with the marble

DINING ROOM

- French white oak flooring
- Fumed white oak built-in buffet with Iceberg Quartz countertop with custom lighting

OFFICE

- Sliding glass doors
- Custom built-in desk
- Silhouette beverage fridge
- Private patio
- Gas fireplace with original stone surround and custom steel mantle
- Brick accent wall with custom lime wash to match flooring

LAUNDRY ROOM

- Ann Sacks tile
- LG washer & dryer
- Custom cabinetry

POWDER ROOM

- Custom floating vanity with quartzite countertops and white veining
- Textured porcelain tile
- Graff fixtures

MUDROOM

- Porcelain tile
- Custom built-ins

GARAGE

- Epoxy floors
- 3-car heated garage
- Tesla charger
- Security camera

MECHANICS

- 2 furnaces with humidifiers
- Dual zone heating and cooling
- Backup generator
- 2 sump pumps with battery back up



TONY
GRUNSFELD
MAGNIFIED TO
PERFECTION

ROOM DIMENSIONS

Foyer.....	34' x 8'	Second Bedroom.....	11' x 16'
Living Room	17' x 14'	Third Bedroom.....	13' x 15'
Dining Room	16' x 19'	Fourth Bedroom	12' x 15'
Kitchen.....	18' x 14'	Fifth Bedroom	15' x 13'
Breakfast Area	18' x 14'	Recreation Room.....	31' x 28'
Family Room	17' x 18'	Laundry Room.....	6' x 13'
Office.....	19' x 16'	Media Room.....	14' x 17'
Primary Bedroom	22' x 22'	Storage Room.....	8' x 14'
Walk-in Closet	8' x 16'		

LIVING & DINING

Step inside to a welcoming atrium reception hallway, setting the tone for this modern masterpiece with a custom Venetian accent wall and original Calacatta Borghini Gold marble floors restored to their grand beauty with a custom honed soft sheen. Light fills the space through the custom atrium skylights to depict endless space from inside to outside, while the night custom LED linear lighting leads the way to the stars.



SEAMLESS
INTEGRATION
OF LIVING
SPACE





living room

UNWIND
IN PEACEFUL
BEAUTY





dining/family room



family room



ULTIMATE CHEF'S EXPERIENCE

State-of-the-art Chef's kitchen is highlighted with one-of-a-kind pendant lighting from London with Carrara marble inlay, rift-cut White Oak custom cabinetry, and oversized waterfall honed grey quartzite island. Take your cooking to a whole new level with restaurant-quality appliances; two Fisher and Paykel dishwashers, 60-inch Wolf range with double ovens, six burners, grill, griddle, and pot filler. Sleek

yet formal dining room overlooks the family room area separated by a fumed white oak built-in buffet console with Iceberg Quartz countertops with custom lighting. Beautiful breakfast alcove with custom cabinetry, walk-in pantry, and built-in desks open up to the backyard oasis with extensive bluestone patios and outdoor kitchen featuring Quartz counters and Wolf grill, perfect for entertaining.

FEATURES

- » Rift Cut White Oak custom kitchen cabinetry
- » Honed Grey Quartzite waterfall island and perimeter countertops
- » Custom-made light pendants with Carrara marble inlay imported from London
- » Two Fisher & Paykel dishwashers
- » 60" Wolf range with double ovens, six burners, grill, griddle, and pot filler
- » Breakfast room with custom cabinets and a SubZero beverage fridge
- » Custom built-in desk
- » Custom antique glass accent panels on kitchen and breakfast room cabinets
- » Walk-in pantry with custom shelving and under the counter LED lighting







ALWAYS A WAY
TO BRIGHTEN
ANY DAY



hallway to bedrooms



office



powder room

YOUR PRIVATE OASIS

What makes this house so special is the beautiful split floor plan, as you can entertain at one end and escape to four beautiful bedroom suites on the other end. The peaceful and serene primary suite is the perfect space to unwind from the day with a gas-burning fireplace and private patio overlooking the meticulous grounds. The equally luxurious primary bath features a custom double vanity with black veined Quartz countertops, Ann Sacks tile, heated floors, walk-in steam shower, and Victoria + Albert custom colored charcoal soaking tub. Three additional private bedrooms, all ensuite with outdoor spaces, allow one to retreat to their own special getaway.

BEDROOM

- » Private patio with perimeter stone fencing
- » Gas fireplace with marble surround
- » His & Hers walk-in closet with weathered marble countertops and accent window

BATHROOM

- » Custom double vanity with honed Quartz countertop and under the counter lighting
- » Heated floors
- » Custom Victoria + Albert charcoal tub
- » Icera smart toilet
- » Master laser cut marble in overlapping circular design on floors and entire shower surround up to the ceiling

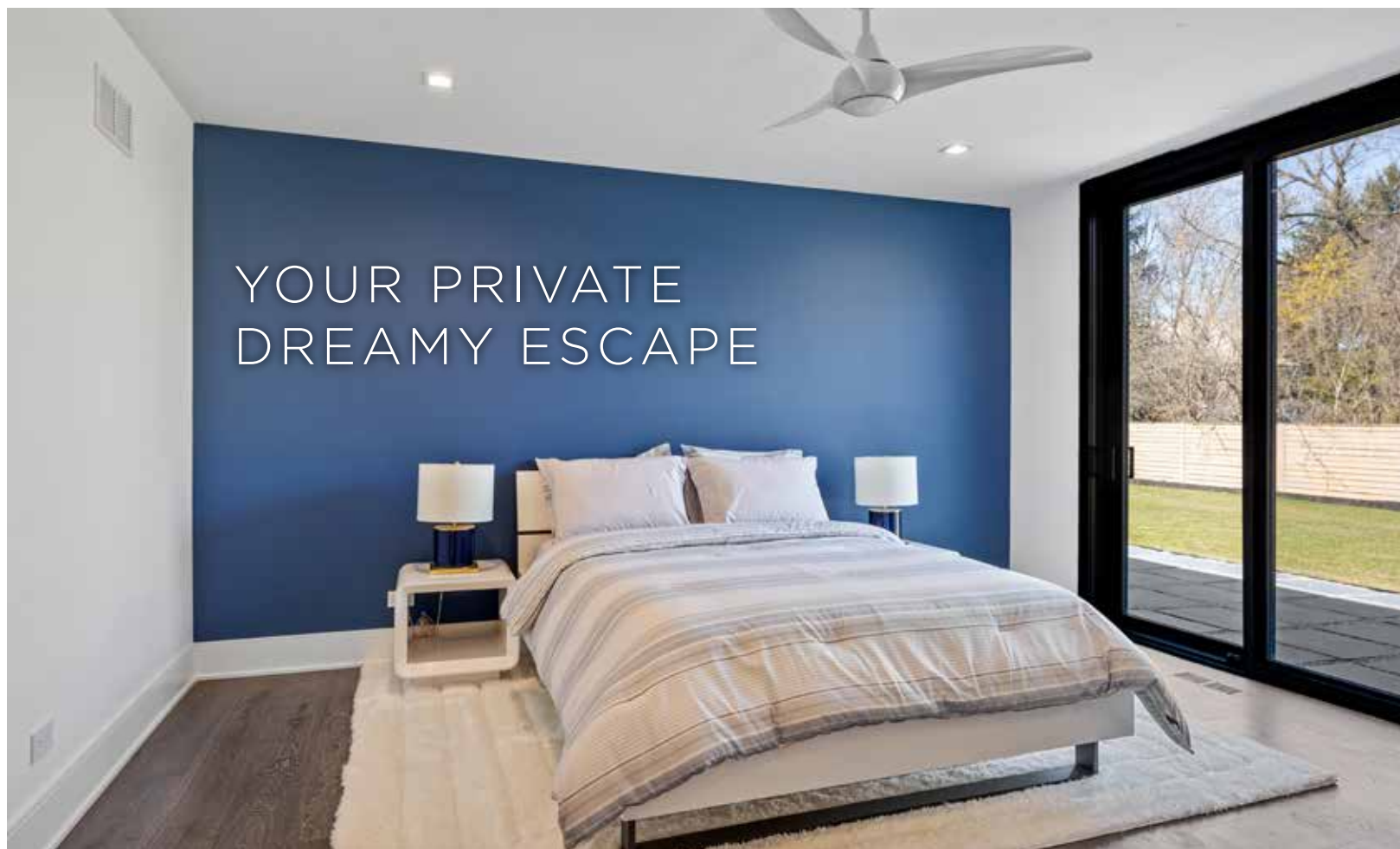






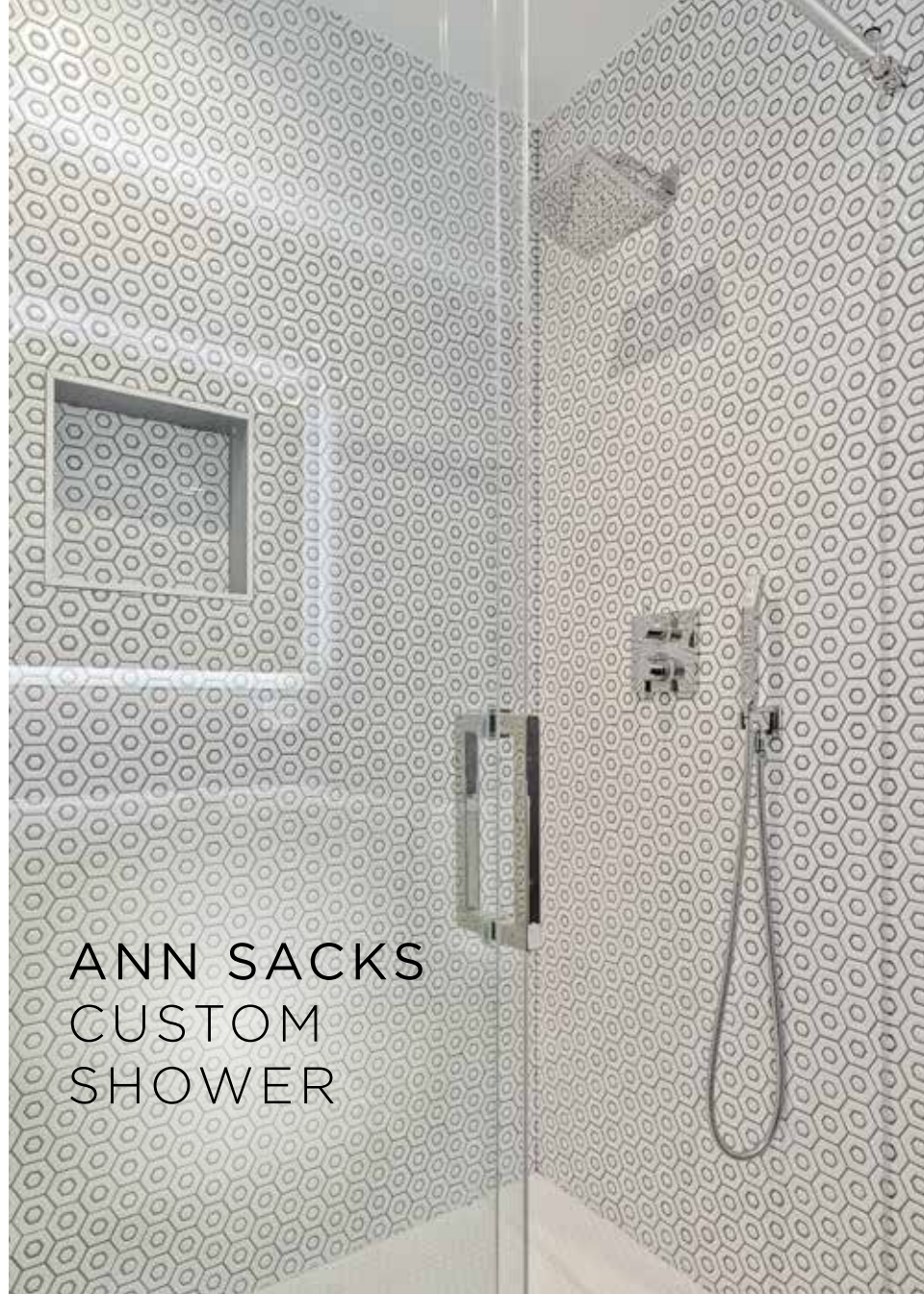
primary bedroom suite





YOUR PRIVATE
DREAMY ESCAPE

second bedroom with ensuite bathroom



ANN SACKS
CUSTOM
SHOWER





ENTERTAIN

Sleek newly engineered lower level with acid stained metallic epoxy floors highlight the fossilized granite wet bar and custom live edge walnut bar. Fully equipped bar looks over the large recreation area with custom cabinetry and media center. Professional level glass surround exercise room, 5th bedroom and bath, and oversized wine room with Italian porcelain tile and sandblasted steel door finish off this space beautifully. Top-of-the-line technology as this Smart Home has been wired with Control4 making this home the best of the best. Peace and serenity radiate throughout this modern masterpiece with the beauty of Tony Grunsfeld magnified. Expect to be mesmerized as there is nothing like this on the North Shore. When you cannot find it, create it and that is exactly what this builder did. Prepare to be mesmerized by pure "art" perfection.

- » Completely excavated basement
- » Integrated a recreation space that provides great space for all ages
- » Custom live edge walnut bar from Seattle
- » Fossilized granite wet bar with a wine fridge and beverage fridge
- » Acid stained & metallic epoxy concrete floor
- » Surround sound
- » Glass surround exercise room
- » Wine room with Italian porcelain tile combined with steel and a sandblasted door to match tile design
- » 5th bedroom and bathroom with a walk-in shower and marble-like textured porcelain heated floors



lower level bar



lower level bar



lower level bar

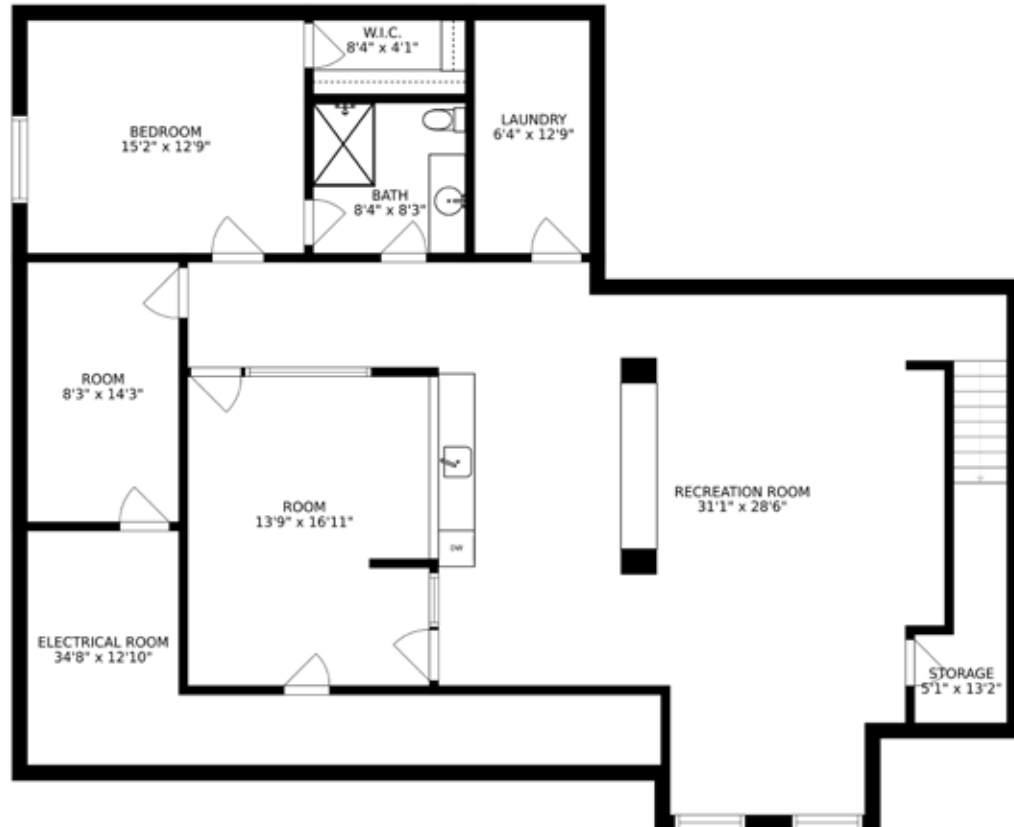




FIRST LEVEL



LOWER LEVEL





#1 *agent*
NORTH SHORE*

LP LUXURY
PORTFOLIO
INTERNATIONAL

30 Green Bay Road | Winnetka, IL 60093
312.925.9899 | jradnay@atproperties.com

@properties

*BrokerMetrics LLC, 1/1/20 - 12/31/20 